

Map 3: Okanagan Basin Surficial Geology

Notes: This map was prepared as part of the report entitled "Groundwater and Hydrogeological Conditions in the Okanagan Basin, British Columbia - A State-Of-The-Basin Report", prepared by L.A. Neilson-Welch and D.M. Allen, December 2007

At the time of preparation of this report, the Geological Survey of Canada is preparing an updated bedrock geology map for the Okanagan basin (expected completion 2008).

Map compiled by DA of Summit Environmental Consultants Ltd., Vernon, BC.

References: BC watershed boundaries, lakes, and rivers - TRIM 1:20,000; Digital Fulton[®] Surficial Geology Data - NRCAN Library, 2007 (<http://ess.nrcan.gc.ca/esic/>); Digital Nasmith[®] Surficial Geology Data - L.A. Neilson-Welch personal communication; Washington Data - Washington Department of Natural Resources, 2007, 1:24,000

*Fulton, R.J., 1969.: Surficial Geology, Vernon; Geological Survey of Canada.
*Nasmith, H., 1962.: Late Glacial History and Surficial Deposits of the Okanagan Valley, British Columbia.

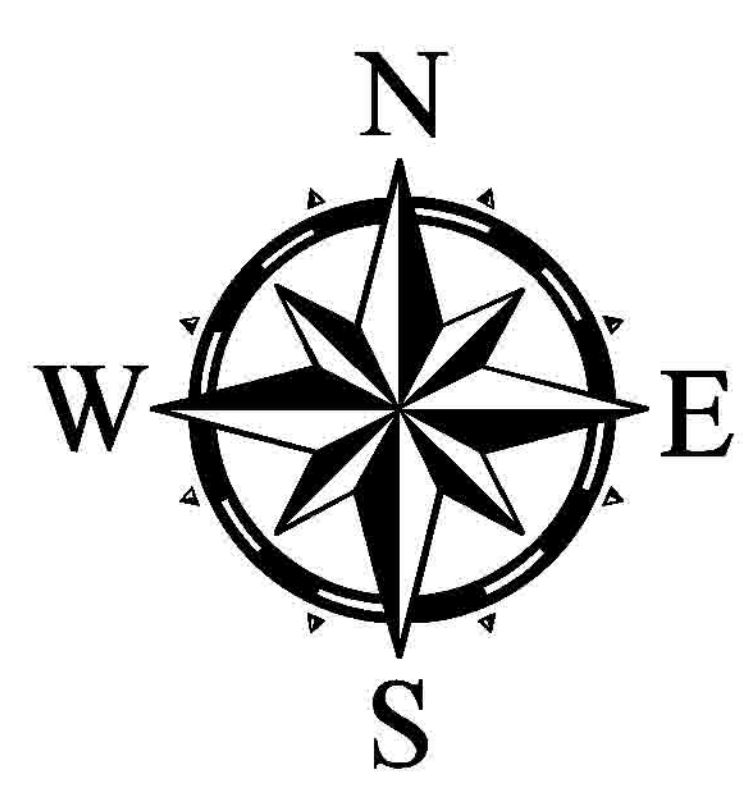
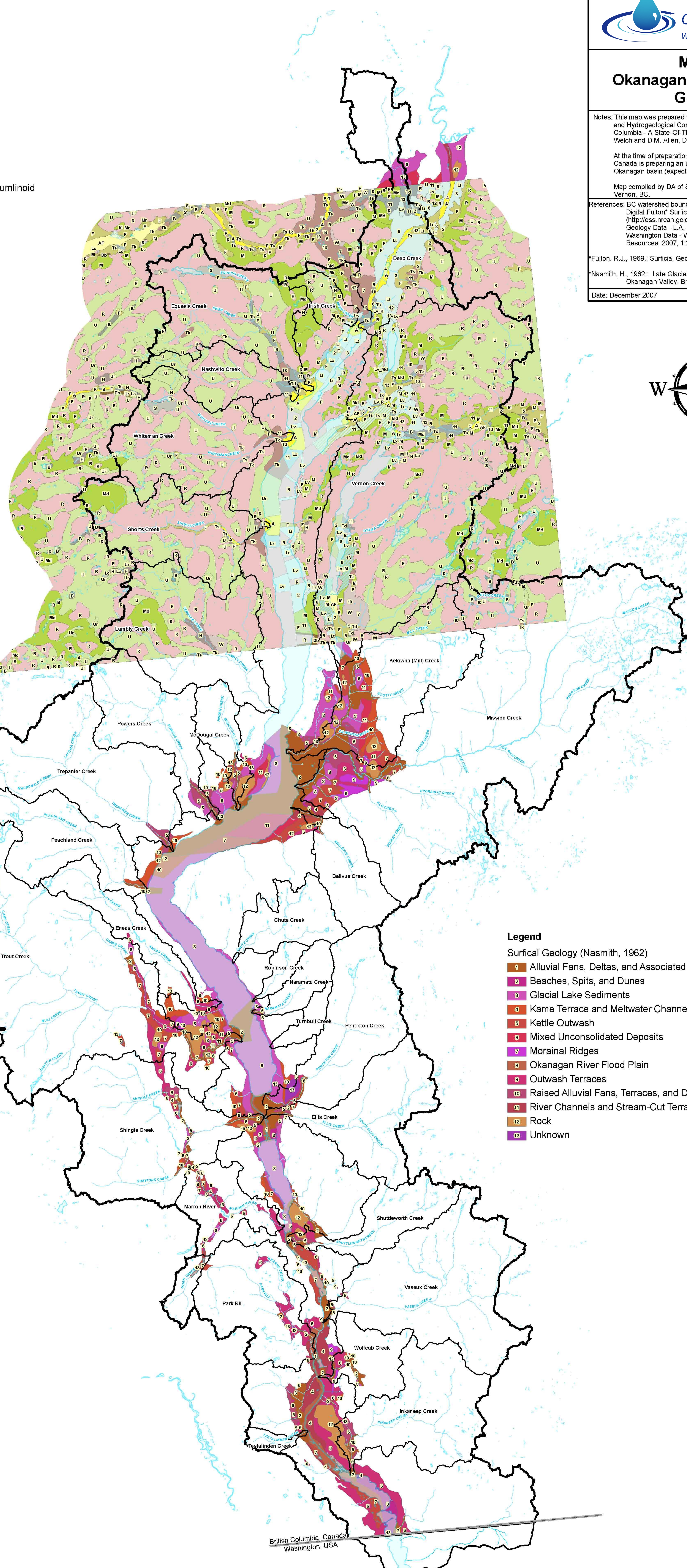
Date: December 2007

File: OBWB Surficial.mxd

Legend

Surficial Geology (Fulton, 1969)

- A Modern Alluvium
- AF Alluvium-Fan Complex
- B Bog Deposits
- DB Drift Benches
- F Fan Deposits
- H Hummocky Gravels
- L Lacustrine Deposits Undifferentiated
- LC Collapsed Lacustrine Deposits
- Lt Lacustrine Deposits thick
- Lv Lacustrine Deposits thin
- LV_M Lacustrine Deposits thin - Morainal Deposits
- LV_Md Lacustrine Deposits thin - Morainal Deposits drumlinoid
- LV_R Lacustrine Deposits thin - Rock
- Lx Lacustrine Complex
- Lx_M Lacustrine Complex - Morainal Deposits
- Lx_R Lacustrine Complex - Rock
- M Morainal Deposits
- M_R Morainal Deposits - Rock
- Md Morainal Deposits drumlinoid
- M7 Morainal Deposits ridged
- R Rock Outcrop
- S Landslide Deposits
- T Terrace Deposits
- Td Terrace Deposits delta
- Tk Kettle Terrace Deposits
- Ts Terrace Deposits stream
- U Undivided Deposits undivided
- Ur Undivided Deposits glacial, fluvial, lacustrine
- W Rill Complex




Legend

Surficial Geology (Nasmith, 1962)

- 0 Alluvial Fans, Deltas, and Associated Gullies and Stream Channels
- 2 Beaches, Spits, and Dunes
- 3 Glacial Lake Sediments
- 4 Kame Terrace and Meltwater Channels
- 5 Kettle Outwash
- 6 Mixed Unconsolidated Deposits
- 7 Morainal Ridges
- 8 Okanagan River Flood Plain
- 9 Outwash Terraces
- 10 Raised Alluvial Fans, Terraces, and Deltas
- 11 River Channels and Stream-Cut Terraces
- 12 Rock
- 13 Unknown

Legend

-  Okanagan Basin
-  Watershed Boundaries
-  Major Streams
-  Lakes
-  Canada / US border

Scale: 1:150,000



British Columbia, Canada
Washington, USA