

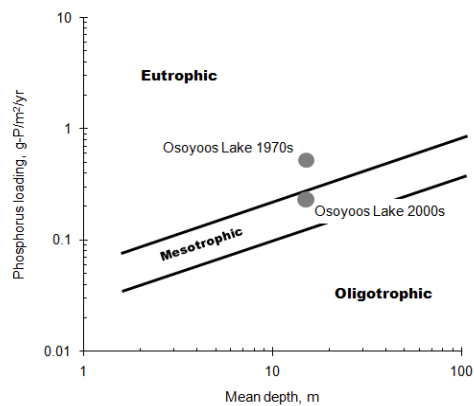
## Investigating methods for including ecosystem requirements in Orders of Approval

Cailin Huyck Orr, School of Earth and Environmental Science  
Lai Tran, Kirti Rajagopalan and Wes Helander, Civil and Environmental Engineering  
Michael Barber, State of Washington Water Research Center  
Marc Beutel, Civil and Environmental Engineering  
Barry Moore, Natural Resource Sciences

## Setting and local habitats



## Water quality



## Invasive species



Milfoil



Mysis shrimp



Cattail

## Osoyoos Lake wetlands



## Threatened species



Painted turtle



Yellow breasted chat



Toothcup



Tiger salamander



Photo: Osoyoos Lake Quality Society

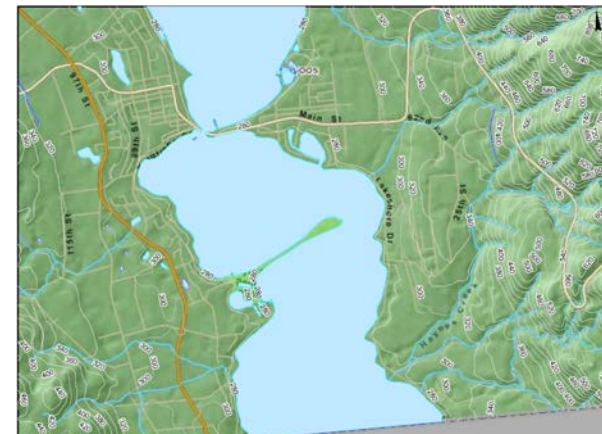
## Wetlands

## Riparian

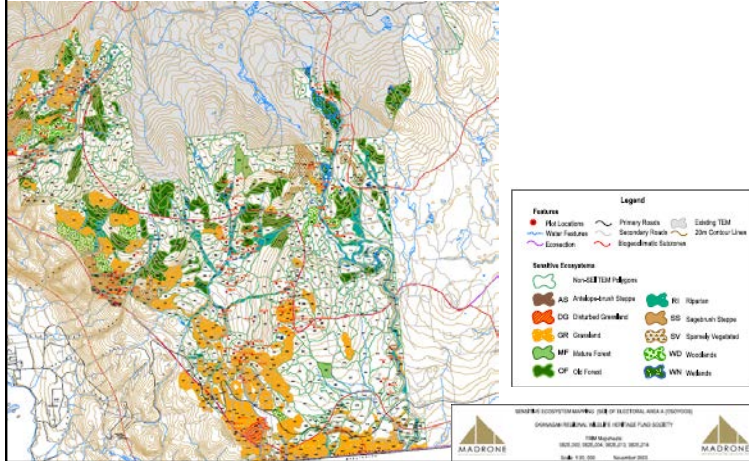


Photo: Regional district Okanagan-Similkameen

## Tiger salamander habitat map



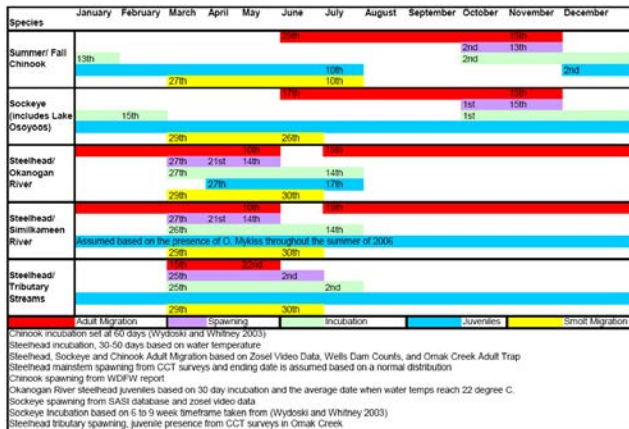
# Sensitive Ecosystem Inventory



# Salmon redd



# Fish periodicity: Okanogan and Similkameen Rivers



Prepared by Colville Tribes and Washington State Department of Fish and Wildlife, Anadromous Fish Division 2009.

# Zosel Dam Operating Procedures Plan fish flows

Discharge: Zosel Dam (cfs, m <sup>3</sup> /s)	Time period	Target species	Life stage	Location
333, 9.43	Oct 1 – Apr 15	Chinook	egg/fry survival	downstream
482, 13.6	Mar 1 – Jun 15	Steelhead	spawning egg/fry survival	downstream
200, 5.66	June 15- Aug 1	resident fishery	all	downstream
<b>Additional release:</b>				
Pulse release: 2,850 acre-feet, 3.5 million m <sup>3</sup>	April – timing determined each year	Sockeye	smolt	Flush from lake to downstream

Ecology 1990, (Barber et al. Study1, 2010 )



## Downstream flow mitigation structure

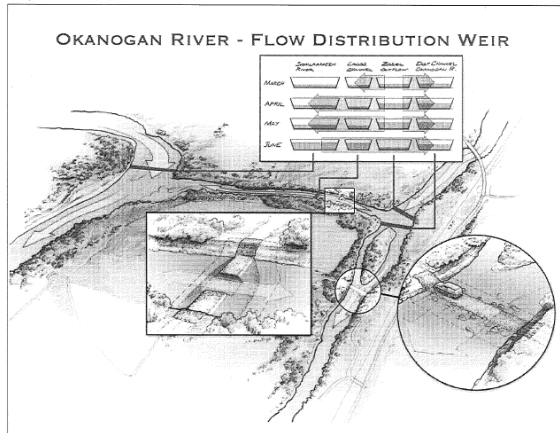
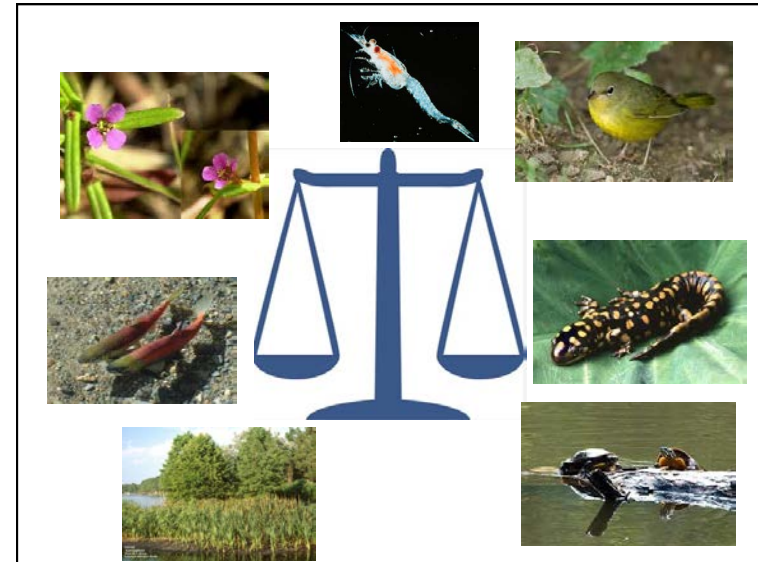


Figure 27. Apportionment of flows in Okanogan and Similkameen rivers with the Colville Confederated Tribes



## Major points

- Water quality in the lake is an important criterion for in-lake habitat.
- Lake levels could possibly be used to control invasive species. This is likely to degrade shoreline habitat of threatened species.
- Lake levels impact riparian habitats that are important for threatened animal species.
- Discharge from Zosel dam impacts downstream Salmonid habitat
- There are trade-offs between different management scenarios

## Acknowledgements

John Arterburn of the Confederated Tribes of the Colville Reservation  
 US Fish and Wildlife Department  
 Jerry Mitchell, Kristina Robbins, Safford Kirk and Orville Dyer from the BC Ministry of Environment  
 Mark McKenney and Alicia Osland, Osoyoos Lake Water Quality Society  
 Dan Sherratt, Washington State Department of Ecology Environmental Assessment Program