



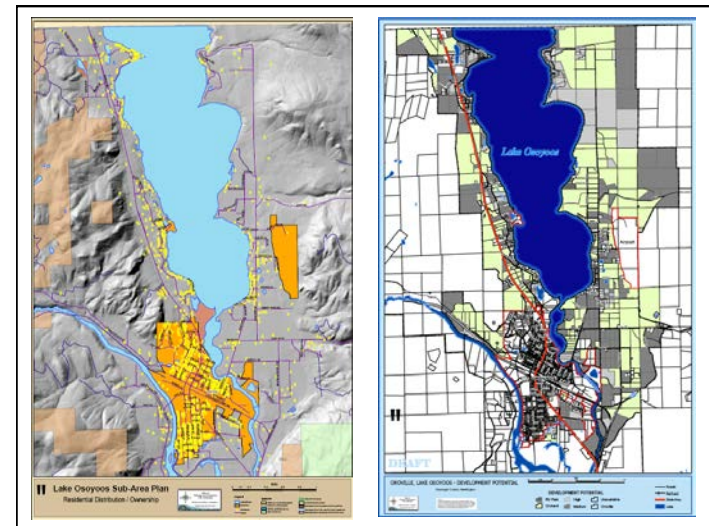
Welcome to
Oroville Washington

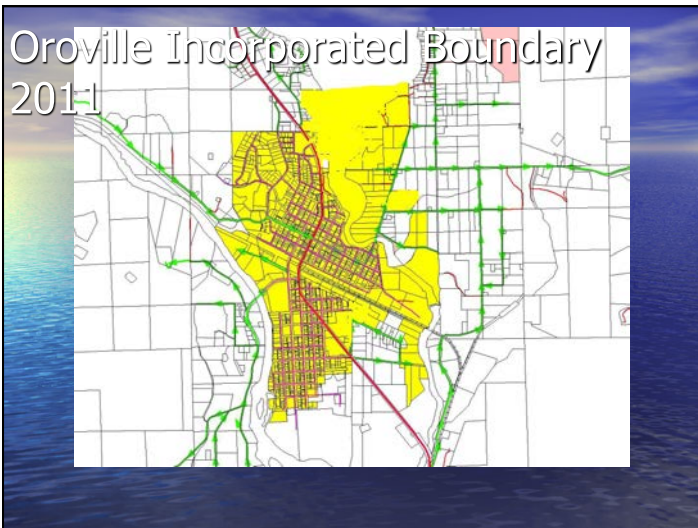
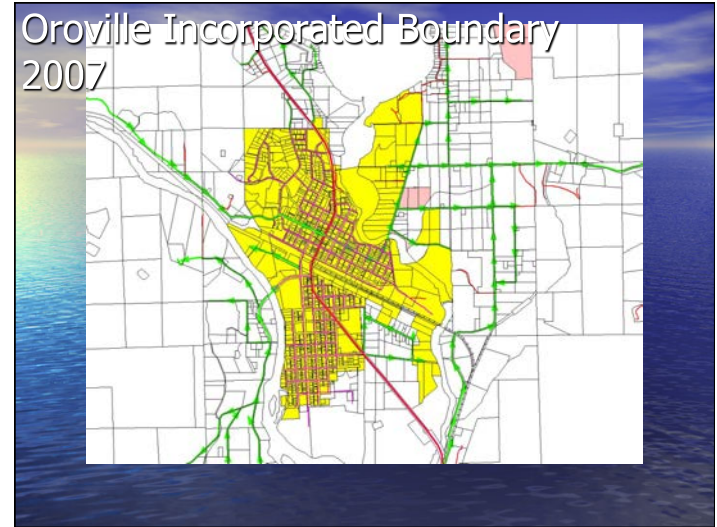
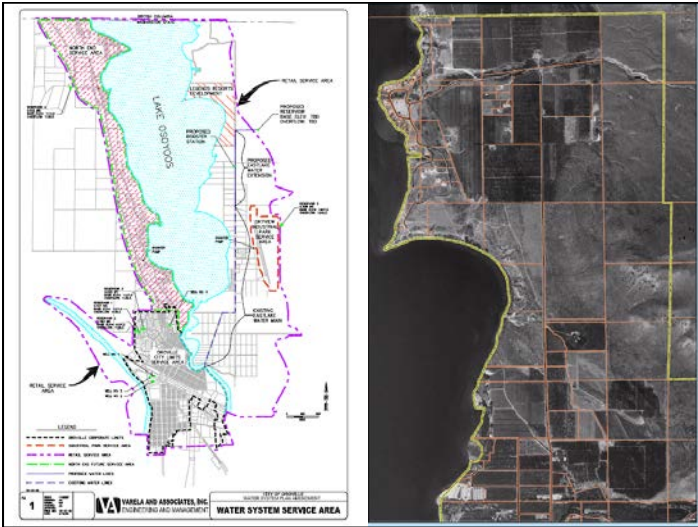
Infrastructure and Stewardship for a Sustainable Economy

Presenter:
 Chris Branch
 Community Development Director
 City of Oroville
 Ph: 1-509-560-3535
 E-mail: chrisb.oroille@nvinet.com

- OBJECTIVES OF PRESENTATION
 - UPDATE FROM 2007 PRESENTATION
 - Briefly: WHATS GOING ON IN TERMS OF DEVELOPMENT ON LAKE OSOYOOS, U.S.
 - WHAT IS BEING PROPOSED IN LAND USE REGULATON THAT SHOULD PROTECT AND MAY IMPROVE LAKE QUALITY.

- ECONOMIC AND DEVELOPMENT TRENDS
 - RETAIL SALES DECLINING BUT WE ARE BETTER OFF THAN OTHER WASHINGTONCOMMUNITIES
 - A FEW SMALL BUSINESSES CLOSED DOORS
 - NO DEMAND FOR VACATION HOMES – CONDO AND SUMMER HOME DEVELOPMENT MOVING SLOWLY IN ANTICIPATION OF UPSWING IN ECONOMY
 - NEW AGRICULTURAL BASED BUSINESS, CARBON CYCLE CRUSH, MOVING FORWARD
 - EXPANSION OF OROVILLE REMAN AND RELOAD FACILITY – 3 NEW DRY KILNS





VERANDA BEACH

- CLUSTER DEVELOPMENT ALONG SHORELINE
- PROVIDED MOTIVATION FOR SANITARY SEWER
- FINANCING BASED ON DEVELOPMENT PROGRESS NOT A PRETTY SCENERIO

Sandalia – Annexed territory under Okanogan County Shoreline Master Program -1976

30 units
25 ft. from shoreline
Close monitoring
Dock – Conditional Use Permit size shape etc due to Recreational User conflict (i.e., water skiing vs dock development)
Wetland mitigation
Public Trail Designation

Mitigation largely negotiated.

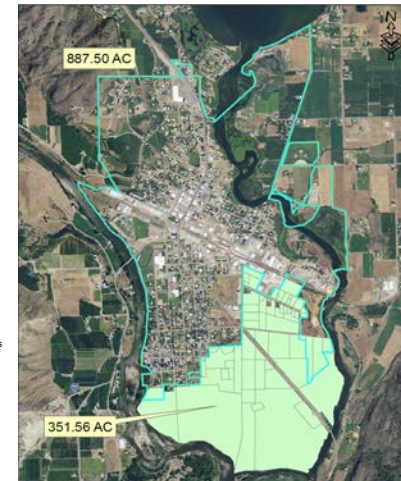


Sonora Shores

- Phased redevelopment of old mobile home/ RV Park
- Trail negotiated for shoreline access
- Stormwater Swale
- 50' Shoreline Setback – ownership factors increases setback and includes trail

SHORELINE MASTER PROGRAM REGULATIONS - EXISTING

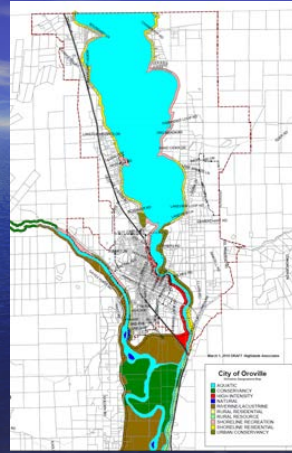
- Oroville Currently Implements Two Shoreline Master Programs – Shoreline Master Programs
 - Pre-annexation – Oroville 1995 Program
 - 50' (Meter) Setback from Ordinary High Water Mark
 - 50' limited vegetation removal standards on Similkameen
 - 25' limited vegetation removal standards on Okanogan
 - No Lake shoreline at time of update
 - Post-annexation – Okanogan County 1976 Program
 - 25' Setback
 - No vegetation removal standards



SHORELINE MASTER PROGRAMS - UPDATE

GOAL - NO NET LOSS OF ECOLOGICAL FUNCTION AND VALUE

RIPE FOR LITIGATION



River Oaks Mobile Home and RV Park – 1998 Development

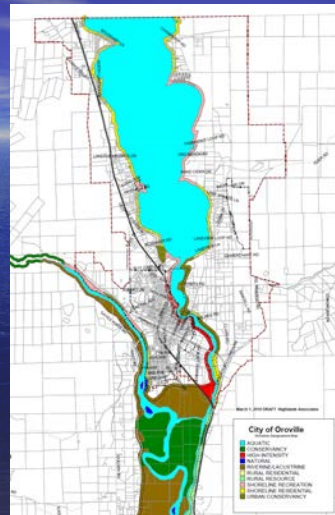
- Similkameen River Frontage
- Oroville Shoreline Master Program 1997 Update
- 50' setback - Vegetation removal limited to selective pruning for shoreline access and view.
- Natural vegetative swale at shoreline for stormwater protection



Draft Shoreline Management Plans

GOAL - NO NET LOSS OF ECOLOGICAL FUNCTION AND VALUE

RIPE FOR LITIGATION
Successful or not



Key Shoreline Update Concepts and Provisions

GOAL - NO NET LOSS OF ECOLOGICAL FUNCTION AND VALUE

Pre-existing non-conforming uses
Shoreline Setbacks

Shoreline Setbacks

Made up of two parts:

Vegetation Setback

Use Setback

50 – 100 feet total – depending on use designation.

Critical Area Update Draft and Existing Provisions

Fish and Wildlife
Conservation Areas

Riparian Habitat



Wetlands

Critical Aquifer Recharge Areas

Frequently Flooded Areas

Geologically Hazardous Areas

Erosion hazard areas

Slide hazard areas

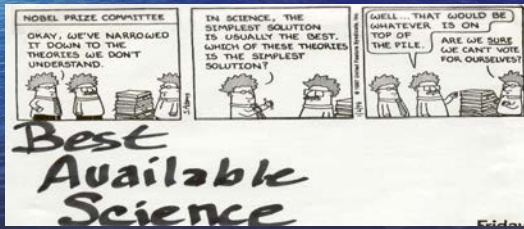
Earthquake hazard areas.

Water Quality Program



Growth Management Programs and Initiatives Underway

- Water Management and Planning
- Water Rights and Resource Acquisition
- Critical Areas Ordinance Updates to include
 - Best Available Science



Growth Management Programs and Initiatives Underway (cont.)

- Comprehensive Plan Updates (partly funded)
 - Joint Count/City Public Participation
 - Updates to both County/City Plans will need to be reviewed and reconciled.
- Shoreline Master Program Updates (partly funded)
 - County-wide Policy Development, Inventory and Analysis Completed in 2010
 - County/City Master Program Development and Adoption

SHORTFALLS

- Incentives for sustainable development (e.g., shoreline restoration, low water use, increased densities)
- Clear Management Objectives for channel above Zosel Dam.

Dam

- POLICIES FOR SEWER CONNECTIONS ON EASTLAKE
- A BETTER UNDERSTANDING OF SUSTAINABLE ECONOMIES.

Initiatives and Projects we could use....

- DEFINITIVE GROUNDWATER STUDIES
- DEVELOP AN HONEST DEFINITION OF SUSTAINABILITY AND SET GOALS ACCORDINGLY
- RESOURCES TO RESTORE DEGRADED/DAMAGED SYSTEMS

Major Emphasis in Planning and Implementation

- DECIDE OUR COMMON MANAGEMENT OBJECTIVES AND COMMUNICATE
- Consider the risk in non-reversible decision-making and use conservative approach (i.e., do more not less)
- Explore what is REALLY sustainable.

VIA 97 – AN OKANO/AGAN ALLIANCE

VIA 97 INTERNATIONAL PARTNERSHIP
A LONG STANDING, ECONOMY DRIVEN
PARTNERSHIP
TRADE, TOURISM TRANSPORTATION
.....ADD SCARCITY – A FUNDAMENTAL
BASIS OF ECONOMICS