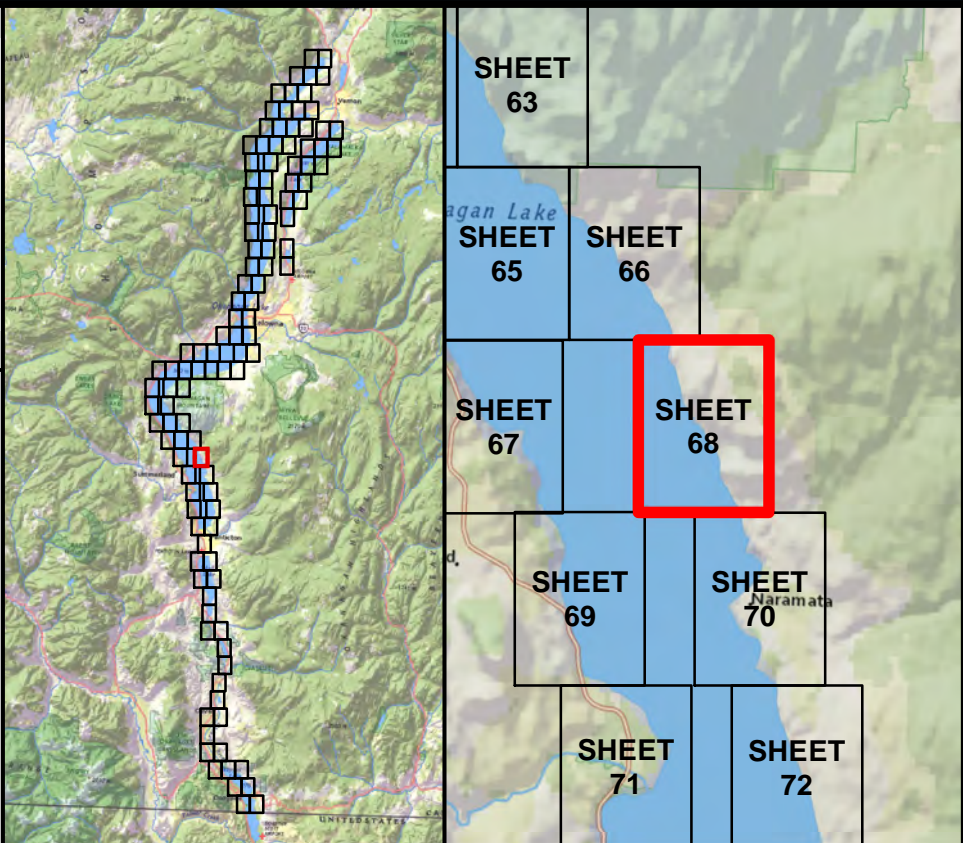




nhc
northwest hydraulic consultants
30 Gostick Place
North Vancouver, B.C. V7M 3G3
Canada
Office: 604.980.6011
Fax: 604.980.9264
www.nhweb.com



- ➡ FLOW DIRECTION
- SPOT ELEVATION
labelled with elevation in metres (CGVD2013)
- MINOR CONTOUR AT 1 M INTERVAL
- MAJOR CONTOUR AT 5 M OR 20 M INTERVAL
labelled with elevation in metres (CGVD2013)
- DIKE
- ✚ RAILWAY LINE
- ▭ FIRST NATION RESERVE BOUNDARY
- ▭ MUNICIPAL BOUNDARY
- ▭ REGIONAL DISTRICT BOUNDARY
- STUDY LIMIT

REFER TO NOTES ON INDEX MAP

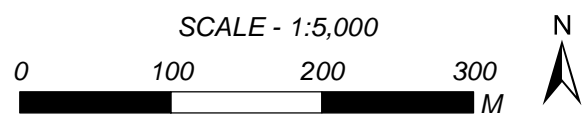
- ▭ INUNDATION EXTENT - DESIGN WITH FREEBOARD (FCL)
- ▭ INUNDATION EXTENT - DESIGN WITHOUT FREEBOARD
- 123.4
(123.1) FLOOD CONSTRUCTION LEVEL (FCL) RIVER ISOLINE
Rivers - labelled with FCL in metres CGVD2013 (FCL in CGVD28)
- 123.4
(123.4) FLOOD CONSTRUCTION LEVEL (FCL) LAKE ZONE
Lake - labelled with FCL in metres CGVD2013 (FCL in CGVD28)
- 123.4
(123.4) FLOOD CONSTRUCTION LEVEL (FCL) SHORELINE ZONE
Lake - labelled with FCL in metres CGVD2013 (FCL in CGVD28)

DESIGN FLOOD
- OKANAGAN RIVER REACHES: 200-YEAR MID-CENTURY^a
- OKANAGAN LAKE: 2017 MID-CENTURY^b
- WOOD AND KALAMAILKA LAKES: 2017 MID-CENTURY^b
- ELLISON LAKE: 200-YEAR MID-CENTURY
- SKAHA LAKE: 200-YEAR MID-CENTURY
- VASELUX LAKE: 200-YEAR MID-CENTURY
- OSOYOOS LAKE: 200-YEAR MID-CENTURY
FREEBOARD = 0.6 METRES

Footnote:
^a "Mid-century" refers to an increase for climate change, projected to occur in 2055.
^b The 2017 flood is the flood-of-record at Okanagan, Wood, and Kalamailka lakes, and is used as the design flood at these locations because it is larger than a 200-year event.

OKANAGAN MAINSTEM FLOOD MAPPING FLOODPLAIN MAPS

SHEET 68 OF 116



Coordinate System: NAD 1983 CSRS UTM ZONE 11N
Units: METRES; Vertical Datum: CGVD2013
FCL values in both CGVD2013 and CGVD28 HTV2.0

Engineer	GIS	Reviewer
VCCB	MSN/MAO/SWM	DPM (rivers)/GFL (lakes)/PKK
Job Number	Date	
3004430 & 3006034	30-APR-2020, rev. 29-JAN-2021	