

Running on Empty? Water and Our Common Future



Identifying the Water Management Issues of the Okanagan Basin

March 19, 2004



*Land and Water
British Columbia Inc.*
A corporation of the government of British Columbia



BRITISH
COLUMBIA

Water Management in the Okanagan


- Land and Water BC, Inc.
- Ministry of Sustainable Resource Management
- Ministry of Water, Land and Air Protection
- Okanagan Basin Water Board

Overview

- **Water supply in the Okanagan Basin**
- **Growth in demands**
- **Balancing supply and demand**

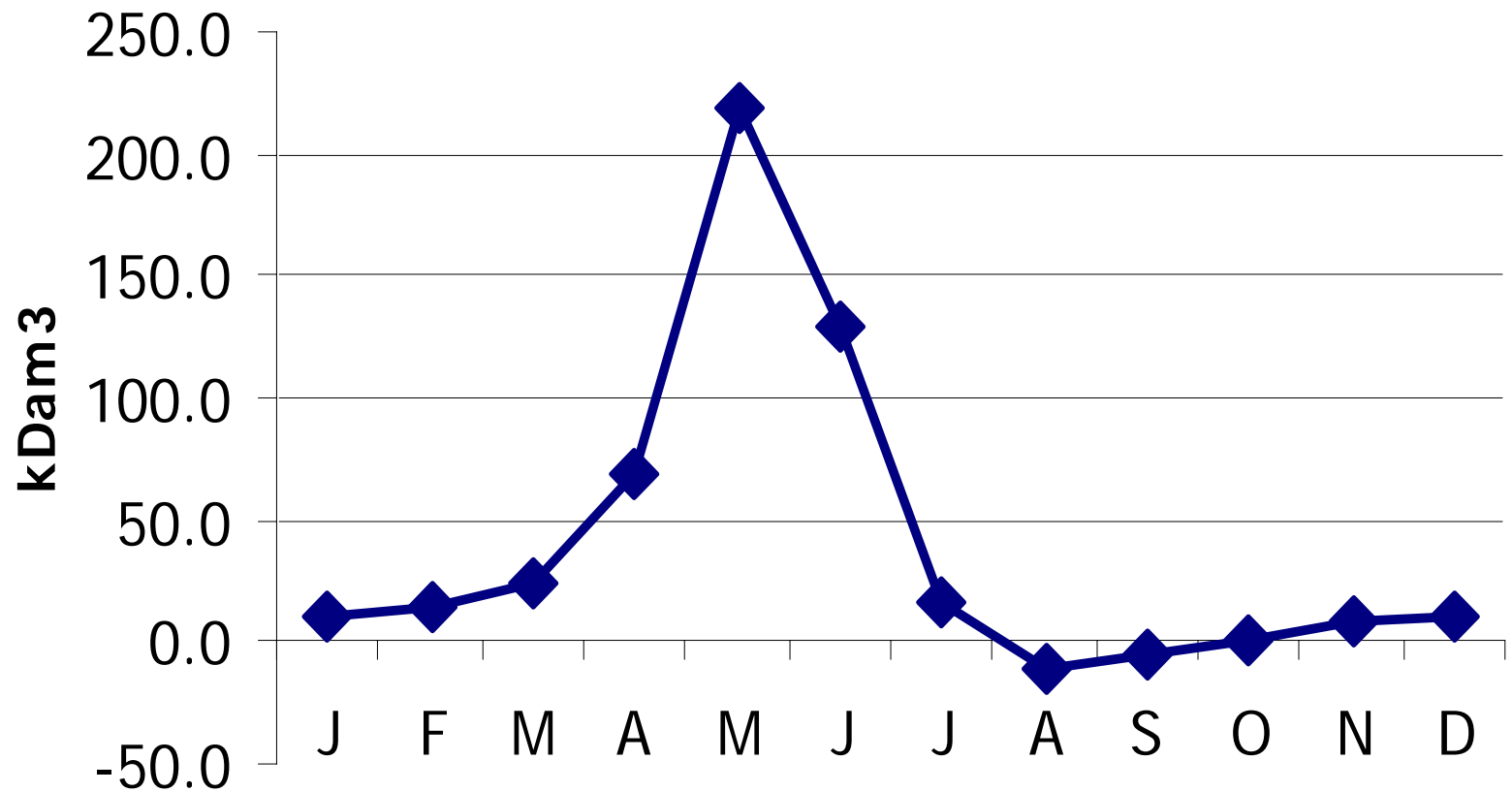
Snow Pack



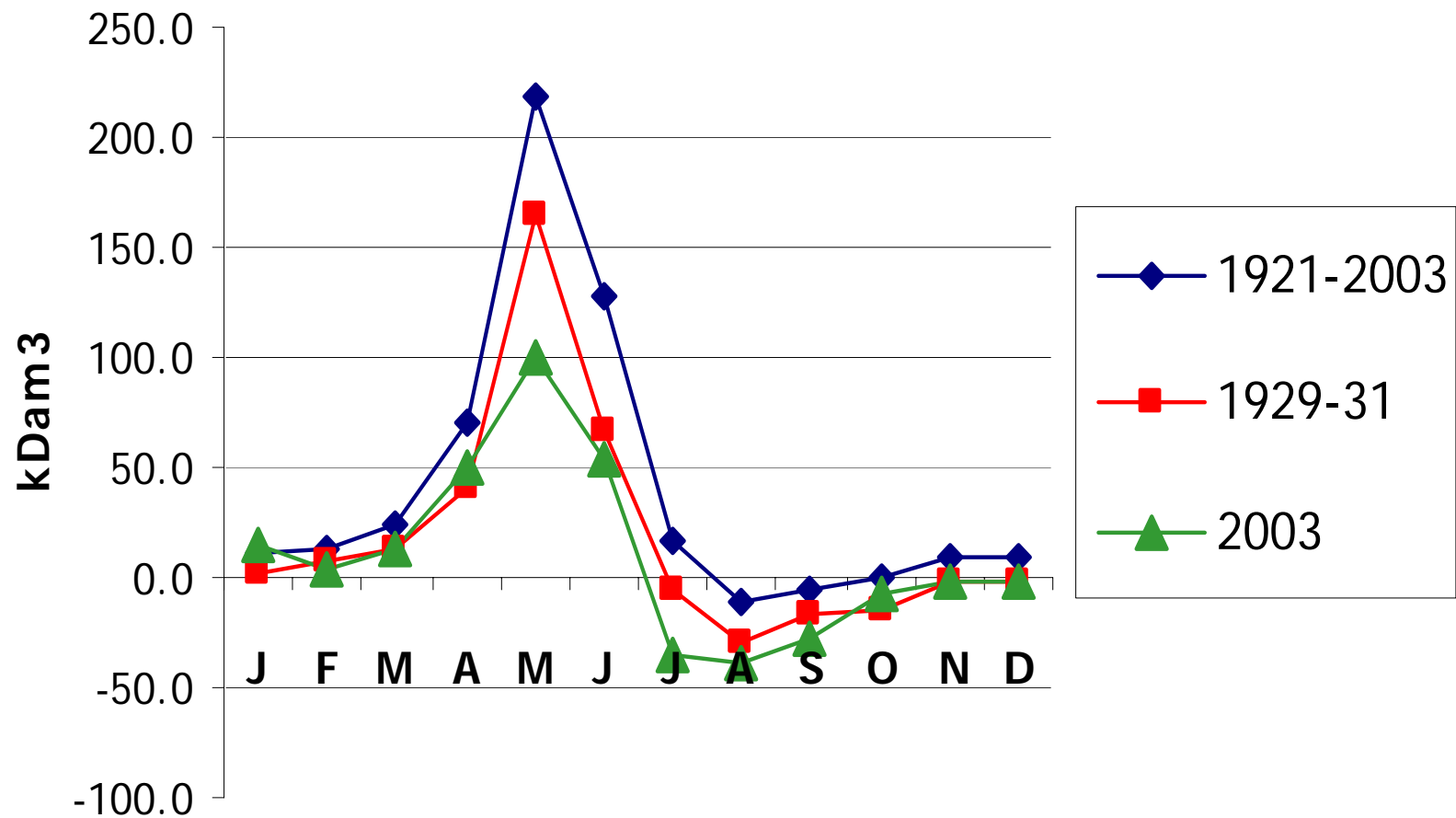
 1200 metre contour

25 0 25 Kilometers


Okanagan Mean Monthly Inflows (1921-2003)



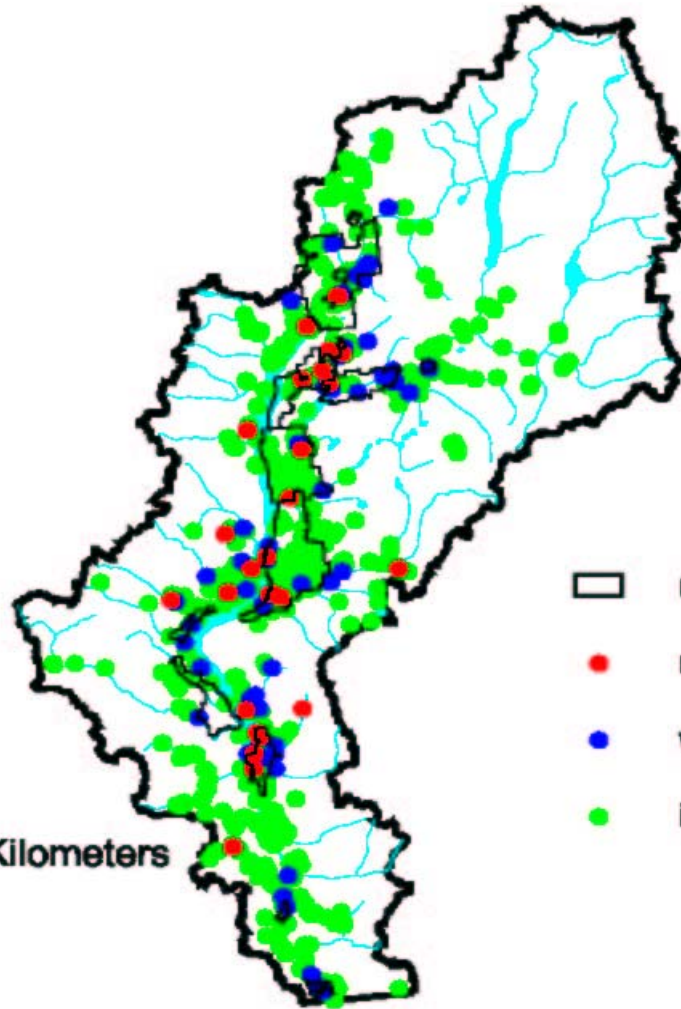
Okanagan Mean Monthly Inflows



Dec. 31, 1959

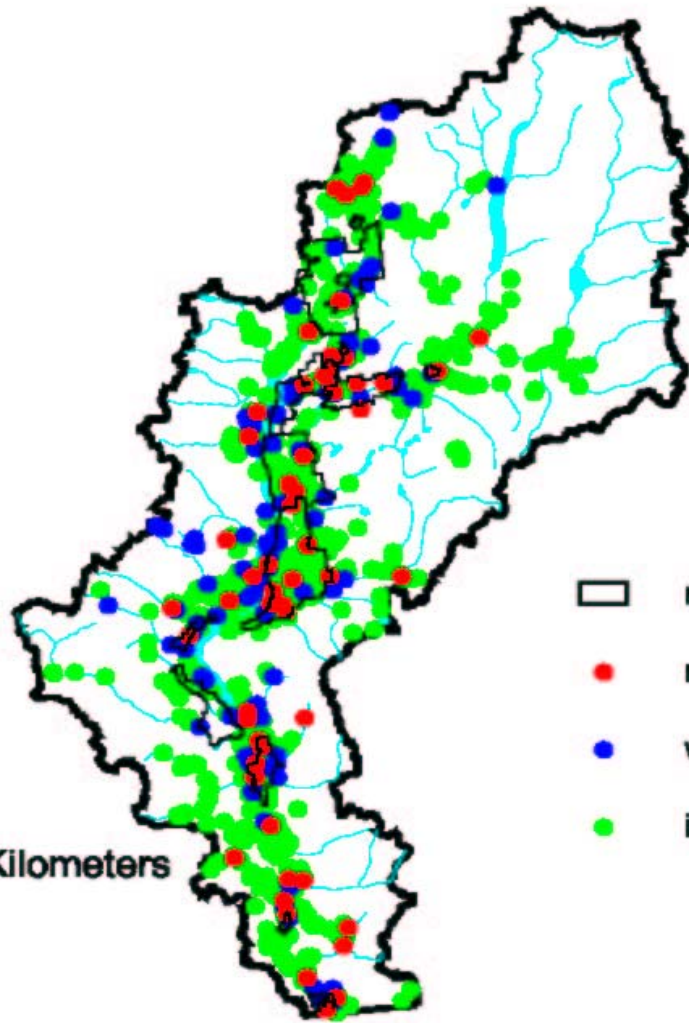


25 0 25 Kilometers




-  municipal boundaries
-  restrictions
-  waterworks licences
-  irrigation licences

Dec. 31, 1969



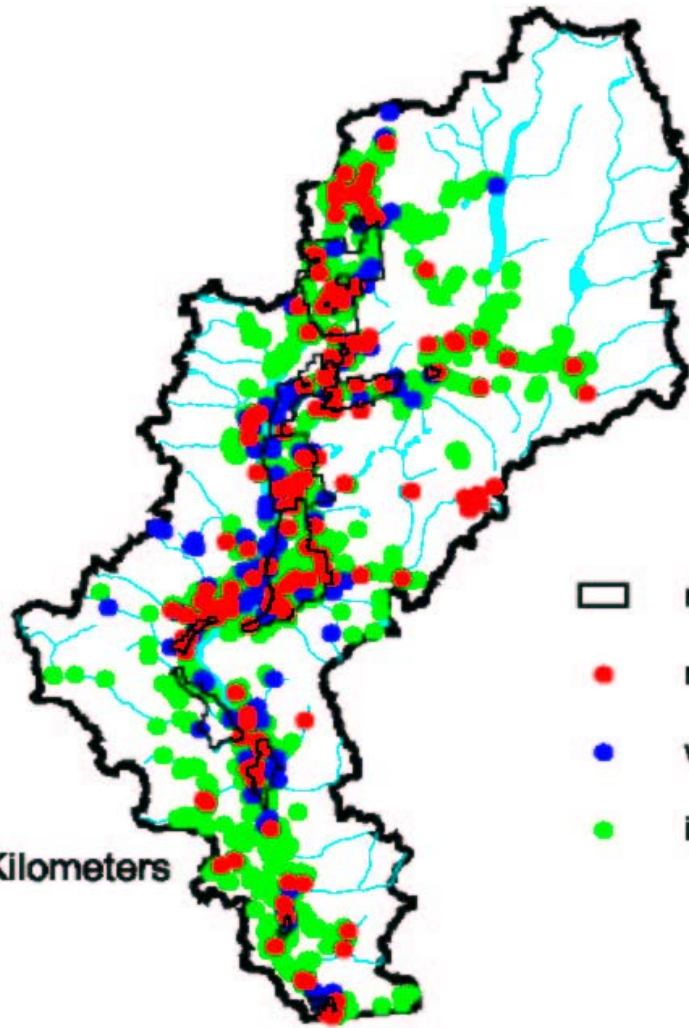
25 0 25 Kilometers

-  municipal boundaries
-  restrictions
-  waterworks licences
-  irrigation licences

Dec. 31, 1979

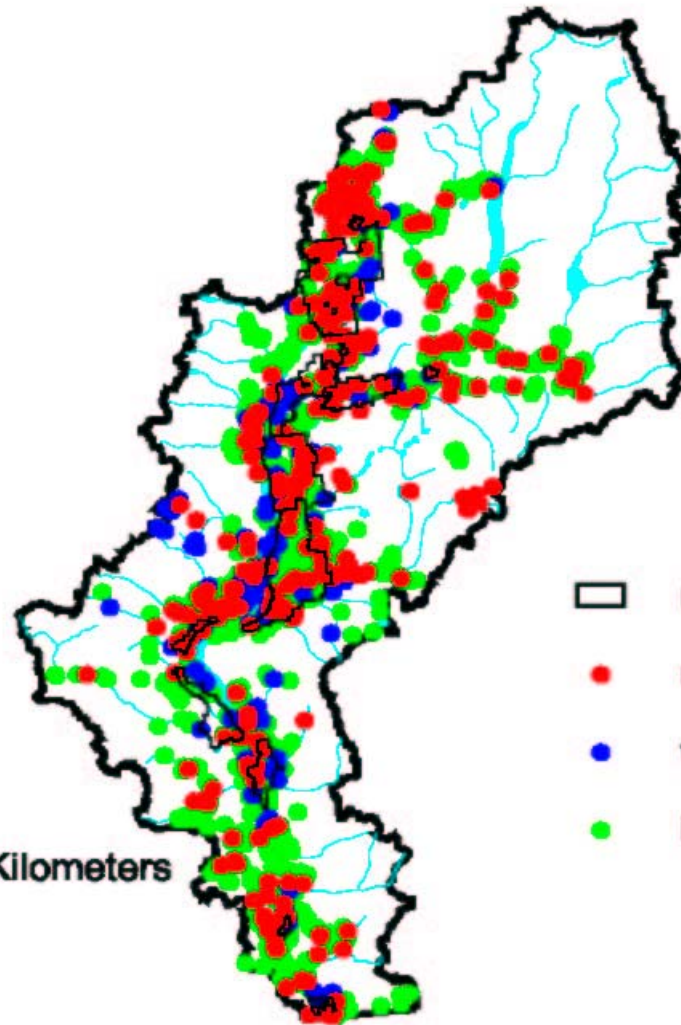


25 0 25 Kilometers



-  municipal boundaries
-  restrictions
-  waterworks licences
-  irrigation licences

Dec. 31, 1989

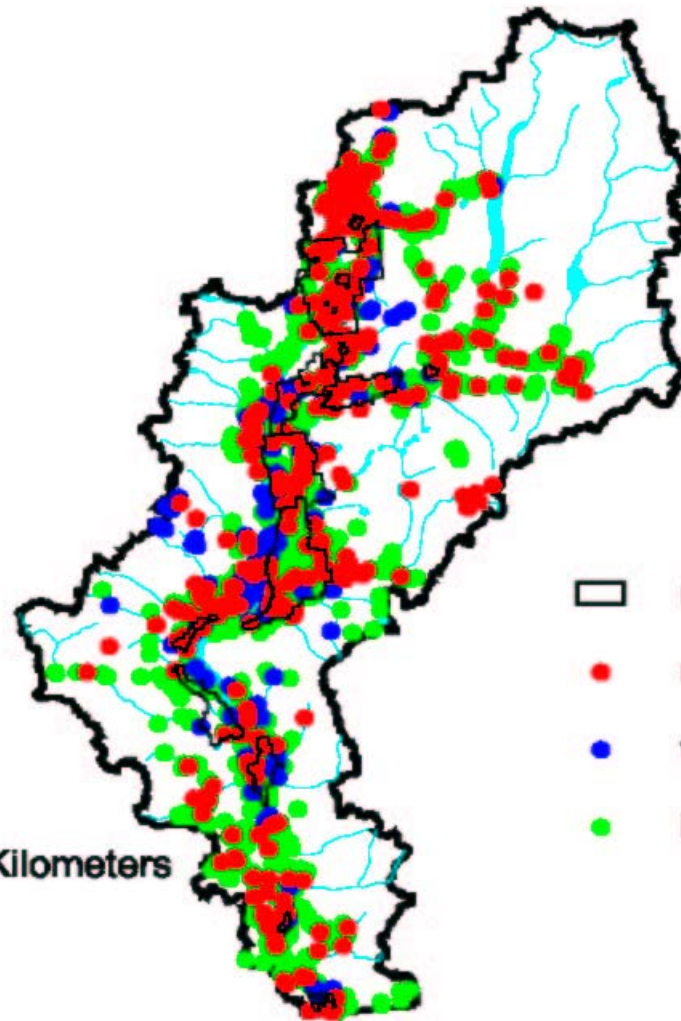




-  municipal boundaries
-  restrictions
-  waterworks licences
-  irrigation licences

25 0 25 Kilometers



Dec. 31, 1999

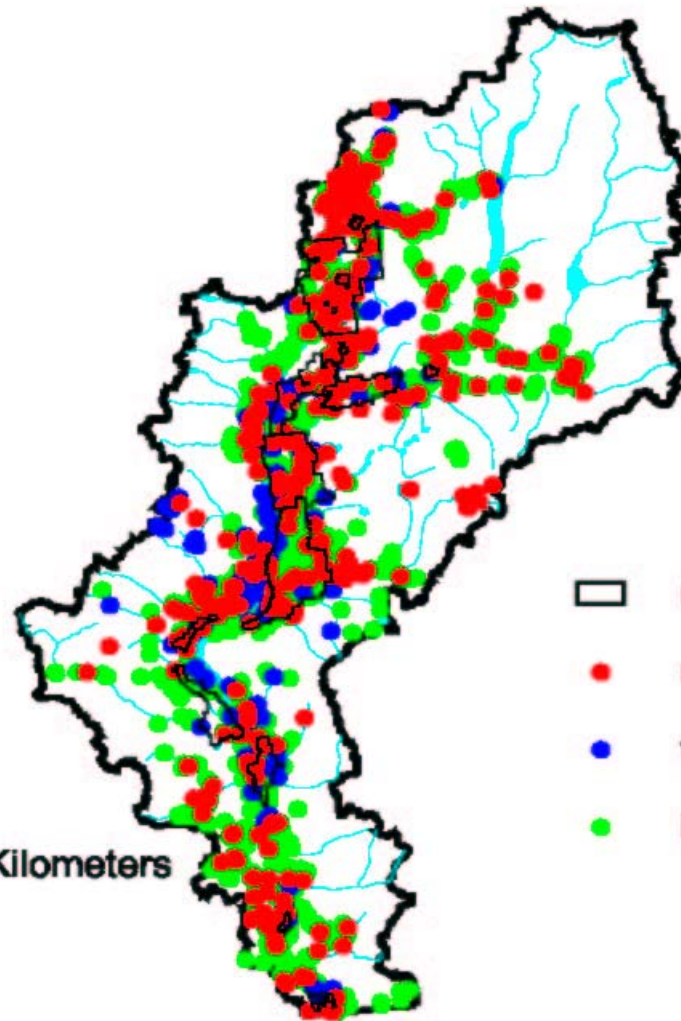


-  municipal boundaries
-  restrictions
-  waterworks licences
-  irrigation licences

25 0 25 Kilometers



Dec. 31, 2003

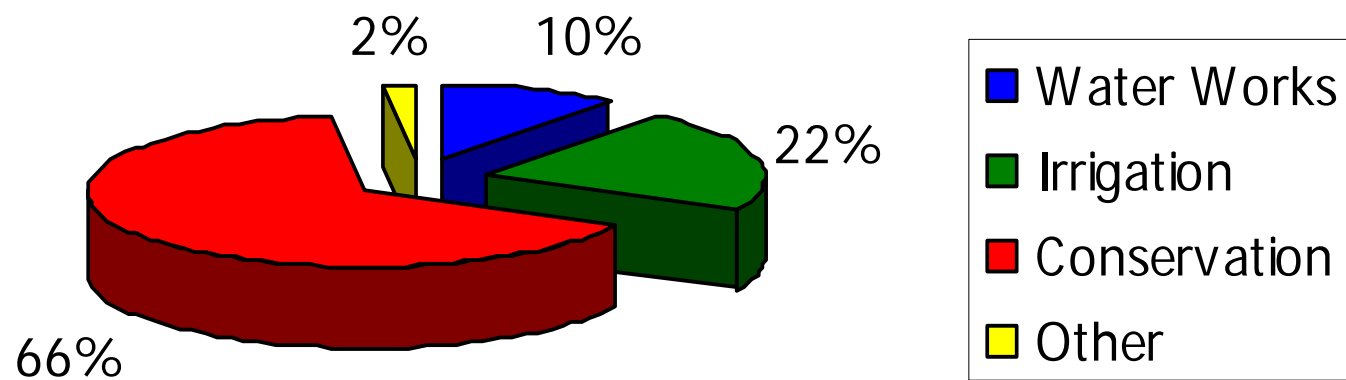


-  municipal boundaries
-  restrictions
-  waterworks licences
-  irrigation licences

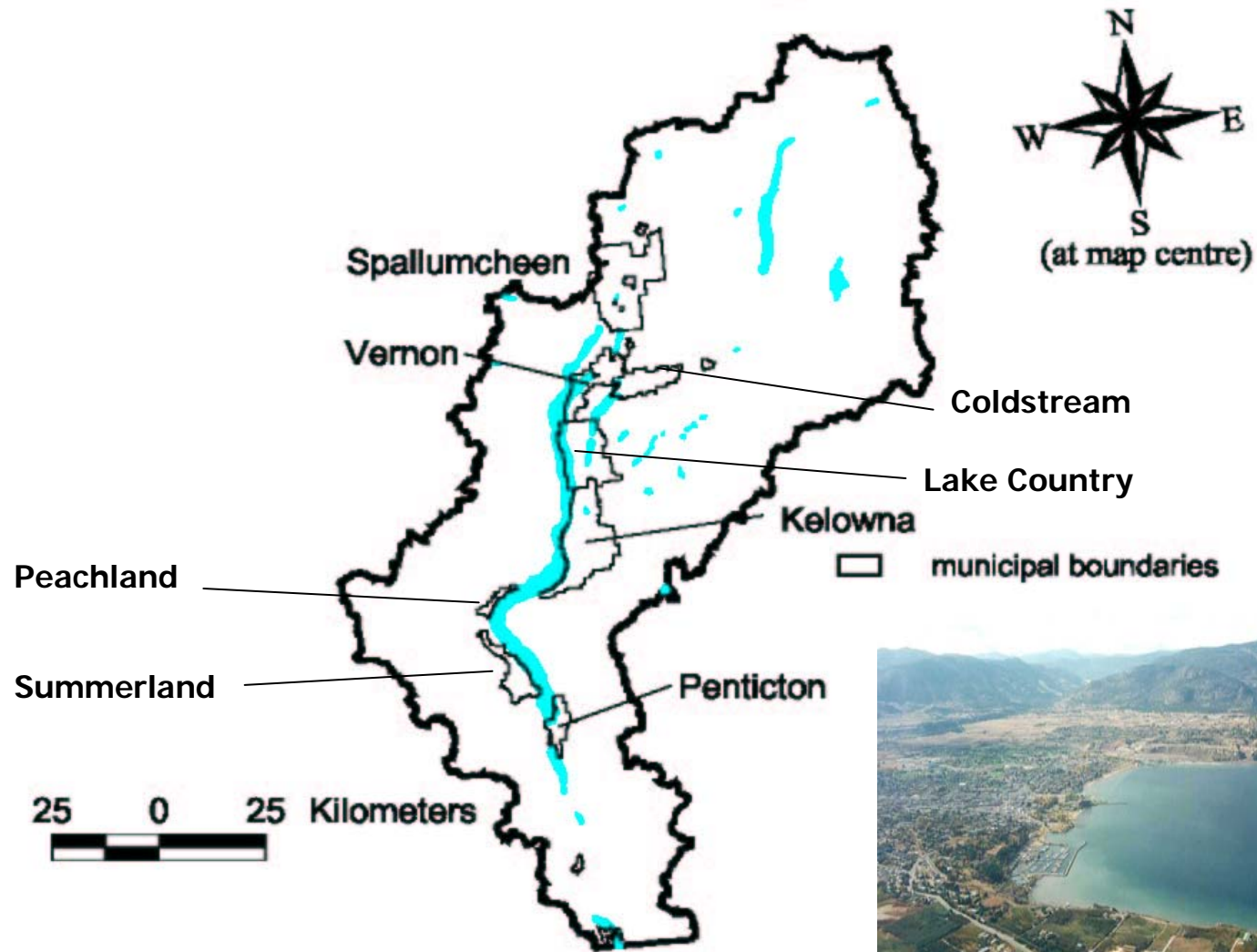
25 0 25 Kilometers



Total % Demand by Sector



Mainstem and Municipalities





Impacts on Tributaries



Planning Tools

1. **A Water Supply Plan**
2. **Hydrology Study**
3. **Water Conservation Plan**
4. **Drought Management Plan**
5. **Emergency Supply Plan**

Community Supply Survey

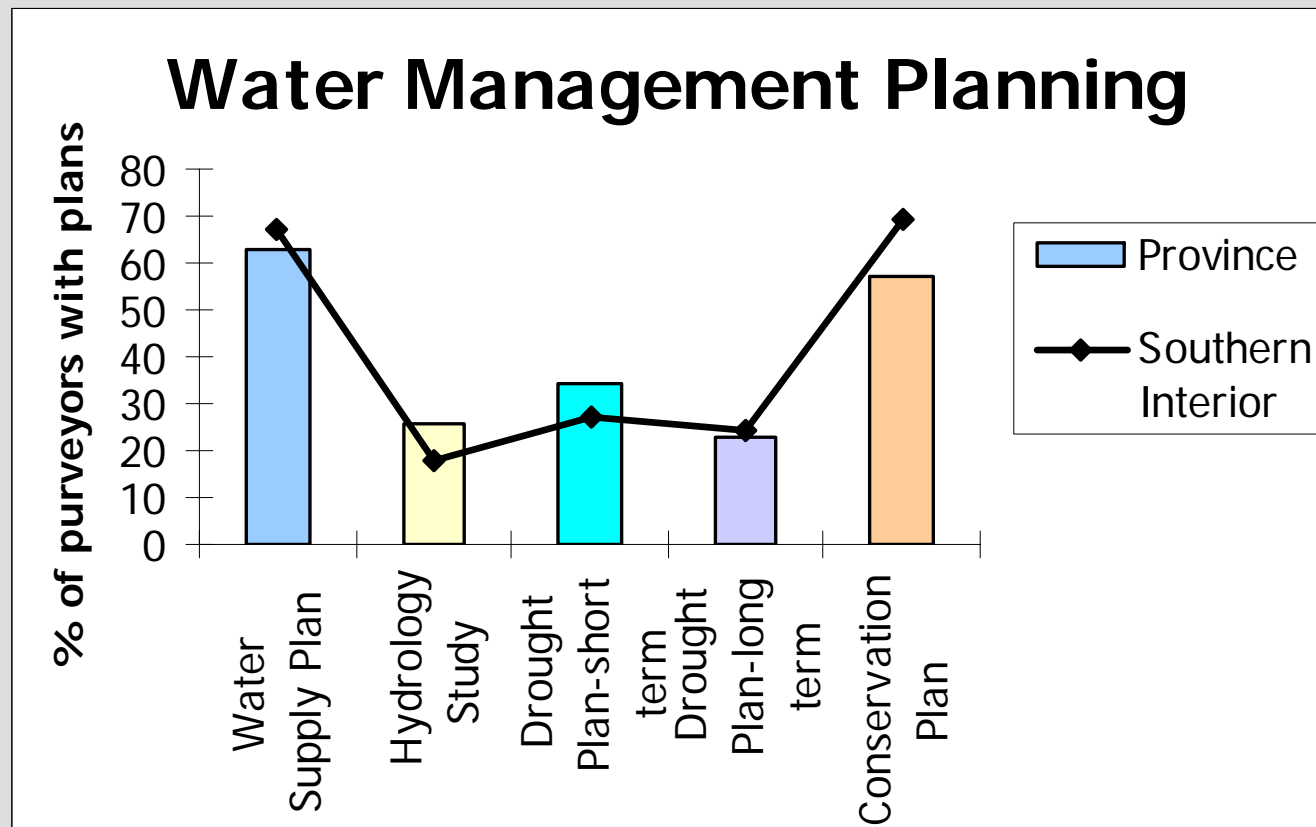




Photo by: T. Laycock

Groundwater Assessments

- **Proposed partnership between the Geological Survey of Canada and the Ministry of Water, Land and Air Protection**
- **Okanagan Basin jointly selected for first study area**

Conclusion

- **Need to investigate the quantity and quality of the Okanagan's future supplies**
- **Need coordinated planning and management efforts**

