

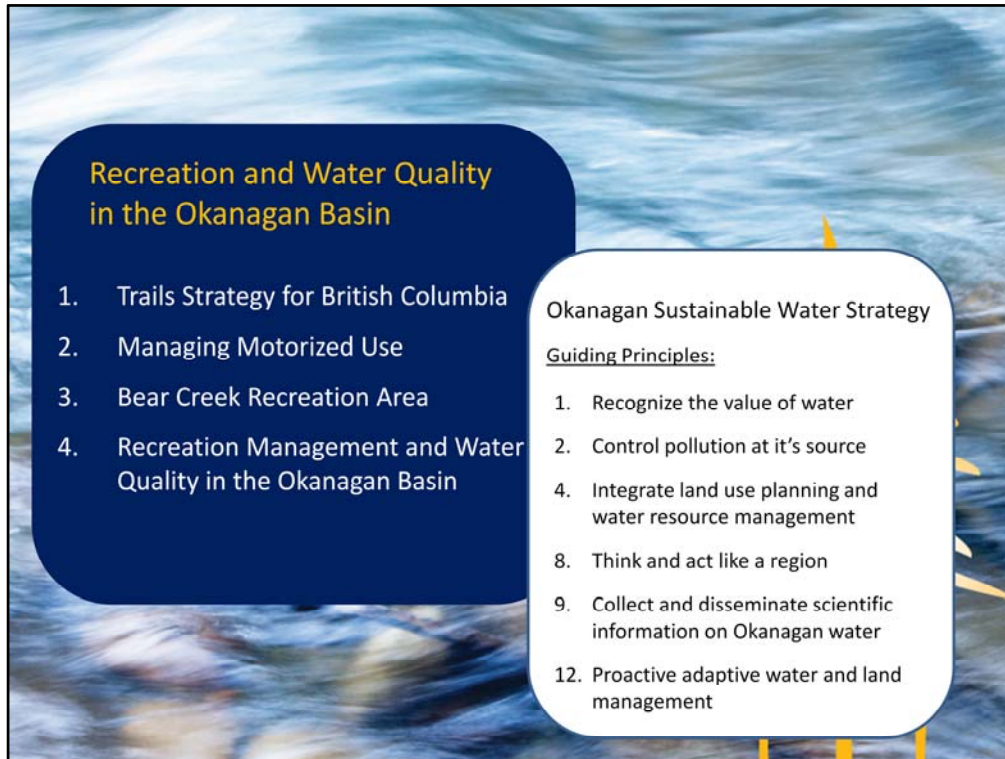
Recreation and Water Quality in the Okanagan Basin



Rec Site and Trails – manage 1300 recreation sites, and 800 trails

Also work in collaboration with other agencies to manage dispersed recreation use on CL outside of Parks

Talk about managing recreation in an integrated resource landbase and particularly where water and water quality is the resource of primary importance.



Begin discussion looking broadly at management of trail based recreation and then focusing more specifically on Bear Creek. Finish with discussion about recreation management in the Okanagan Basin

Want to discuss these topics in the context of some specific Guiding Principles from the Okanagan Sustainable Water Strategy

-agree with interwoven concept; but these are particularly relevant

I hope to demonstrate that our efforts at Bear Creek are specifically aimed at achieving those 6 GP's

Vision

A world-renowned, sustainable network of trails, with opportunities for all, which provides benefits for trails users, communities and the province.

Guiding Principles

1. Sound Environmental Stewardship and Management
3. Respect for other resource users and existing tenure holders.
5. Partnerships and Collaboration
6. Secure Recreation Opportunities for All Trail Users

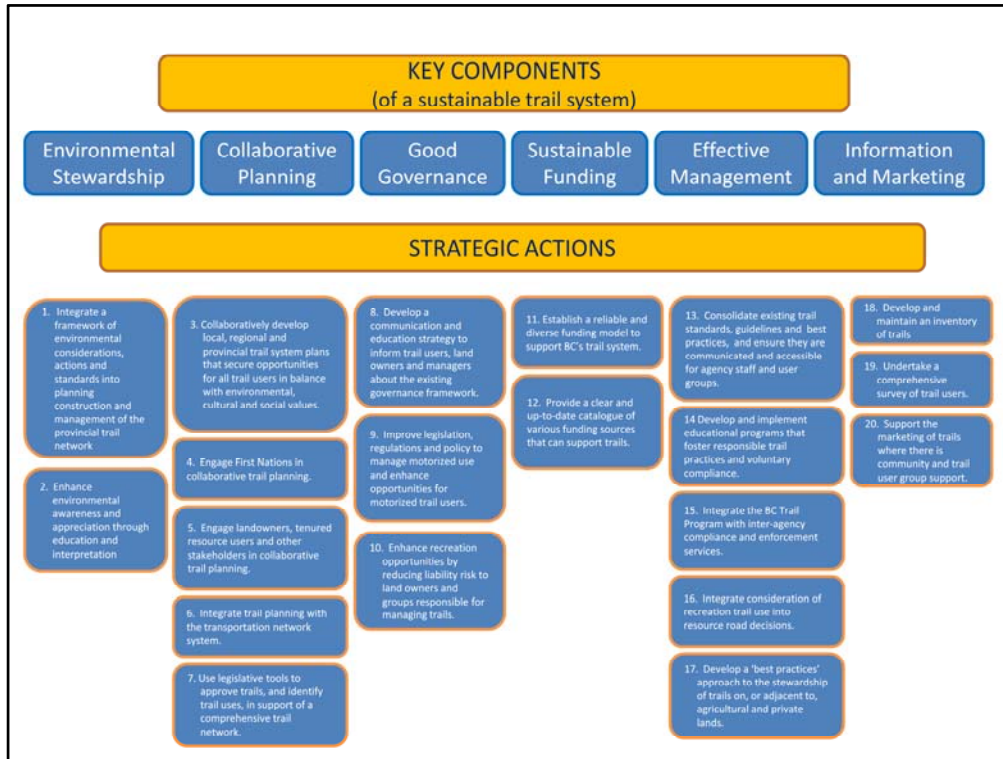
TRAILS STRATEGY
for British Columbia

DRAFT

BRITISH COLUMBIA
The Best Place to Live

BC
100
YEARS

Offer brief quick summary and highlight 4 relevant Guiding Principles



Briefly explain and identify that 3 Key components and 8 SA's are particularly relevant to managing motorized use in an area like Bear Creek

Bear Creek Recreation Site



The Context...

- 35,000 hectares
- Considerable historic recreation use (unmanaged)
- Recreation Sites and Trails BC Recreation Site
 - Forest Recreation Regulation



In 2001, Bear Creek was designated as a motorised Resource Management Zone (RMZ) under the Okanagan Shuswap LRMP. The LRMP was a public process including the Water Supply Association and Local Government.

In 2007, MTCA legally designated the area as a Recreation Site under FRPA S56(1) and entered into a management agreement with OTRA under FRPA S 118.

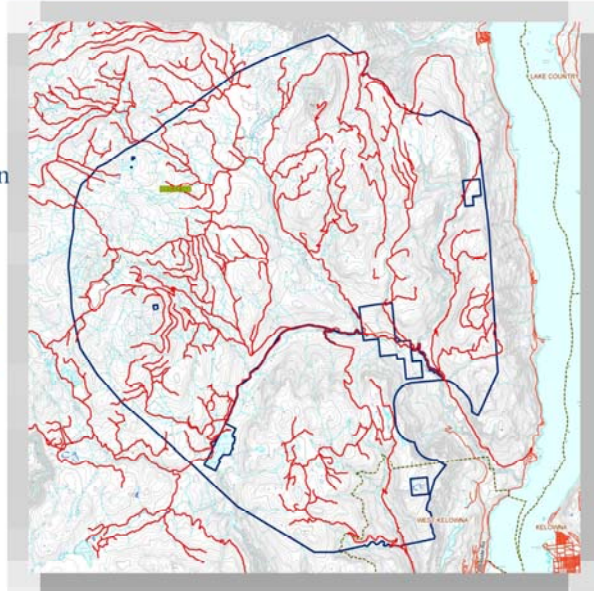
Designation of recreation site provides the necessary tools to MTCA DRO's to manage the Recreation Site under the Forest Recreation Regulation –an essential tool needed to effectively manage recreation, particularly motorized recreation

Bear Creek Recreation Site



The Context...

- 35,000 hectares
- Considerable historic recreation use (unmanaged)
- Recreation Sites and Trails BC Recreation Site
 - Forest Recreation Regulation
- Access : ~ 800km of forest roads*



*Dobson Engineering, 1997

Lets look at an area like Bear Creek:

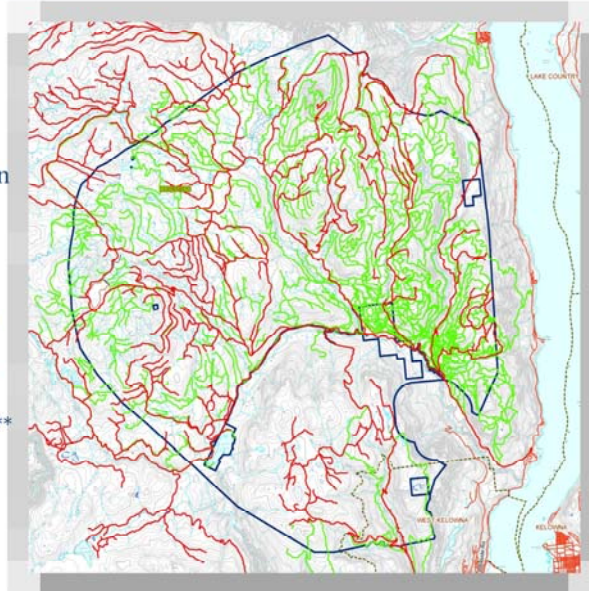
100's of km of active and in-active roads with multiple access points

Bear Creek Recreation Site



The Context...

- 35,000 hectares
- Considerable historic recreation use (unmanaged)
- Recreation Sites and Trails BC Recreation Site
 - Forest Recreation Regulation
- Access : ~ 800km of forest roads*
- Trails: ~300 km of user built trails**



*Dobson Engineering, 1997
**OTRA Estimate, 2007

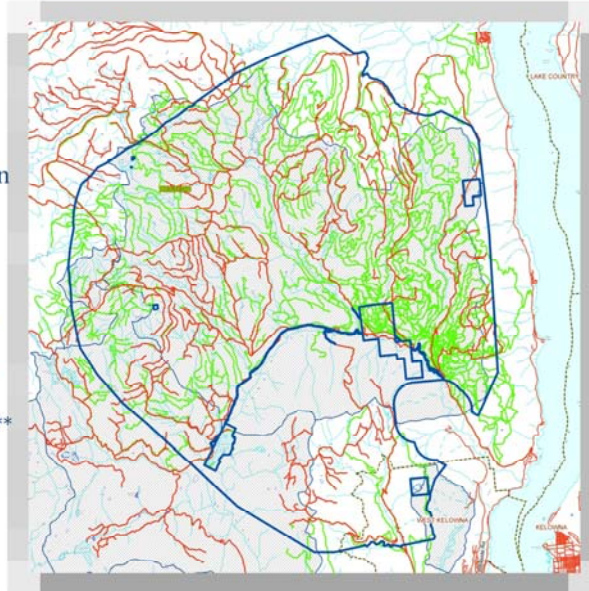
100's of km of user built trails, passively built – ie. where do I feel like riding?

Bear Creek Recreation Site



The Context...


- 35,000 hectares
- Considerable historic recreation use (unmanaged)
- Recreation Sites and Trails BC Recreation Site
 - Forest Recreation Regulation
- Access : ~ 800km of forest roads*
- Trails: ~300 km of user built trails**
- Two Community Watersheds supplying >12,000 residents



*Dobson Engineering, 1997
**OTRA Estimate, 2007

2 Community watersheds serving over 12,000 residents

Multiple Uses in the Watershed



- Range
- Recreation
- Forestry
- Residential
- Mining
- Forest Fire
- Forest Disease



Add to that, Range use, Recreation use, forestry activities, residence, mining and gravel operations

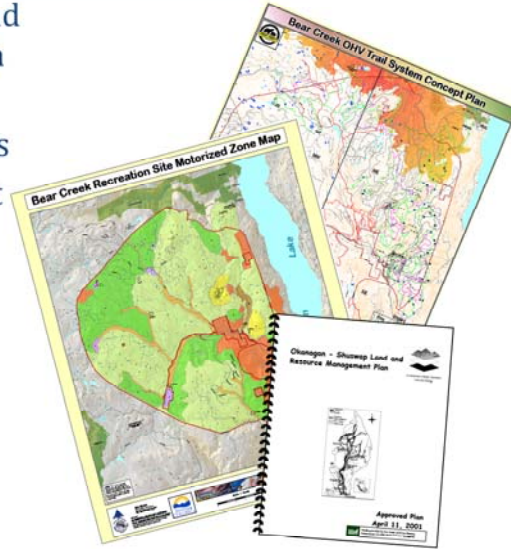
And all of that complicated further by forest fire and disease.

There is a lot happening in an area where water quality remains the highest priority

The Planning Approach



- Higher Level Planning and First Nation Consultation
- Inter-agency Regional Management Committees
- Stakeholder Engagement
- Partner Engagement
- Operational Planning
- Implementation
- Monitoring
- Evaluation
- Adaptive Management
- On-going inter-agency Communication



4 'E' approach to managing recreation use



- All 4 'E's must be in place to achieve successful management
- Education is the most cost efficient and effective approach
 - ✓ \$1 spent on education = way more \$ on enforcement

Now before returning back to Bear Creek and specific management efforts, I want to shift gears and talk in a general about important elements fo effective recreation management, particularly for motorized trail use.

4 – 'E's

Every element is essential

Shortfall in Ed. Or En. Requires disproportionate increase in En.

Discuss the other model – 2'e's Exclusion and enforcement, expensive and ineffective.

Guiding principle #8 'Think and Act Like a Region' – (in terms of exclusion)

GP #12 – pro-active and adaptive land management

Education

- ✓ Water Quality and Environment
- ✓ Rider Etiquette / Responsible Riding
- ✓ Invasive Weeds
- ✓ Spark Arrestors
- ✓ Rules and Regulations
- ✓ Prohibited Areas

Mechanisms:

- Signage
- Trail Patrols
- Awareness Days/Open House
- Tech Checks
- Sound Checks 96db



GP #1 Recognize (communicate) the value of water

Engineering

- Professionally designed and engineered sustainable trails.
- Water management through engineered solutions.
- Engineered structures to mitigate impacts to water, soil and the environment.
- Engineered staging areas to mitigate human impacts
- Comprehensive signage program
- Fencing and barriers to direct rider use patterns



To be effective, engineered solutions must provide reasonable alternatives to undesirable uses

Engineering must provide sensible alternatives to inappropriate use, or it proves ineffective.

i.e. Building suitable trails must accompany closing inappropriate trails, bridges reasonably located.... Or increasing burden on enforcement!

GP#2 Control Pollution at its source

Enforcement

- ✓ Conservation Officer Service
- ✓ MFR Compliance and Enforcement
- ✓ RCMP
- ✓ District Recreation Officers
- ✓ Trail Patrol (peer-based)

Mechanisms:

- Recreation Regulations
- FRPA s.46(1)
- Sound and Tech Checks for 96 db and spark arrestors
- NEW ORV legislation



Stay on trails or stay home!!

Evaluation

- ✓ Water Quality Analyses and Monitoring Plan
- ✓ Sediment Monitoring Plan
- ✓ Compliance Monitoring
- ✓ Effectiveness Monitoring
- ✓ Volunteer Trail Patrol Monitoring Plan and Evaluation forms on a regular basis
- ✓ Stakeholder feedback
- ✓ Water Quality Advisory Committee
- ✓ Inter agency communications



GP# 9 collect and disseminate scientific information

Bear Creek Recreation Site - Overview



The Ministry of Tourism, Culture and the Arts with other agencies, Okanagan Trail Riders Association and various stakeholders has lead a process to develop a managed Off-Road Vehicle riding area to protect water quality, environmental, and recreational resources.

Over \$1 million spent in past two years with specific focus on mitigating impacts to water quality:

- ✓ Closing and rehabilitating trails
- ✓ Re-constructing trails
- ✓ Building sustainable trails
- ✓ Installing fencing
- ✓ Installing signage
- ✓ Designing and implementing education programs
- ✓ Volunteer trail patrols
- ✓ Water quality assessment and monitoring
- ✓ Operation plan development
- ✓ Trail mapping and planning
- ✓ Enforcement planning and implementation

Work is completed by professionals including; Professional Foresters, Geotechnical Engineers, Professional Engineers, Stream Biologists, Professional Agrologists and Professional Geoscientists.

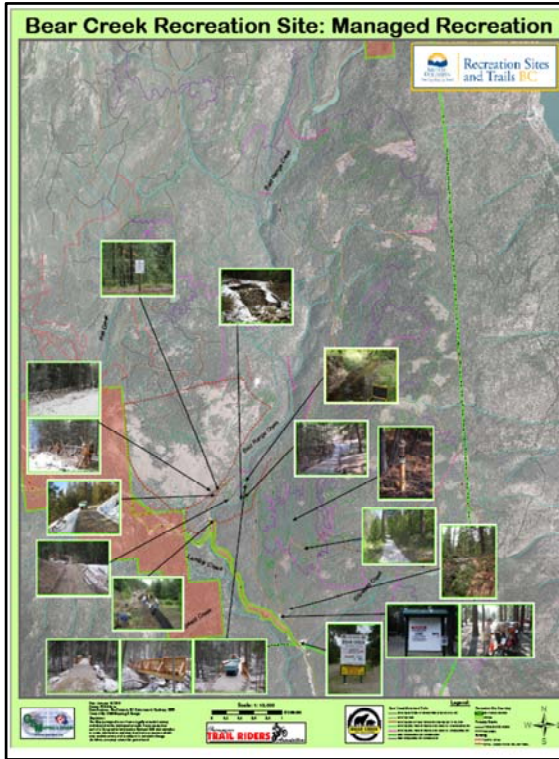
So what does that look like: next slides











Evaluation and Monitoring...

- ✓ Bald Range Creek Water Quality Report – Summit Environmental Consultants Ltd.
- ✓ Bald Range Creek Sediment Monitoring Plan - Geostream Environmental Consulting
- ✓ Compliance Monitoring
- ✓ Trail Patrol Reports
- ✓ Stakeholder Communication
- ✓ Inter- agency Communication



A Way Forward...

- ✓ Continued Collaborative Planning
- ✓ Adaptive Management
- ✓ Best Management Practices and Guidelines
- ✓ Building a provincial model for management of ORV use

