

# Developing British Columbia's Drought Response Plan



Celine Davis

Manager, Science and Adaptation

Ministry of Environment

July 2010

## Presentation Overview

- Why Develop a Plan
- Purpose of the Plan
- The Process
- What we have heard
- Proposed Plan
- Next Steps



## Why Develop a Plan



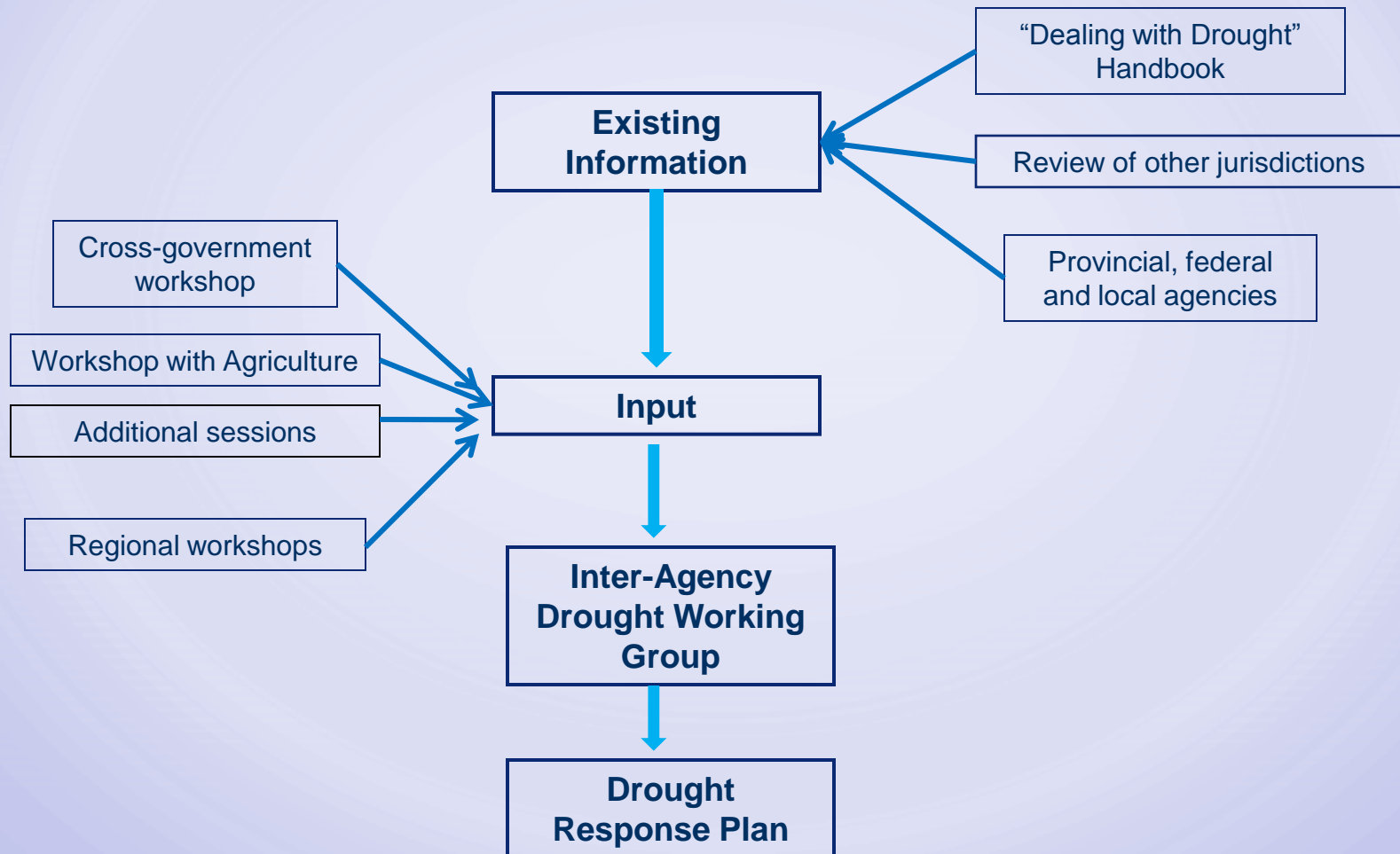
- Post-drought feedback = **earlier communication + clear response plan**
- Need information/data to help manage drought
- Current actions tend to be more reactive than proactive

## Purpose of Plan



- Provides information
- Operational plan that outlines responsibilities at provincial and local level
- Recommends activities for water licensees and communities

# The Process



## What we have heard

- Watershed planning and management
- Monitoring
- Water conservation
- Land Use Planning
- Irrigation efficiency
- Crop management options
- Water use and storage
- Communication

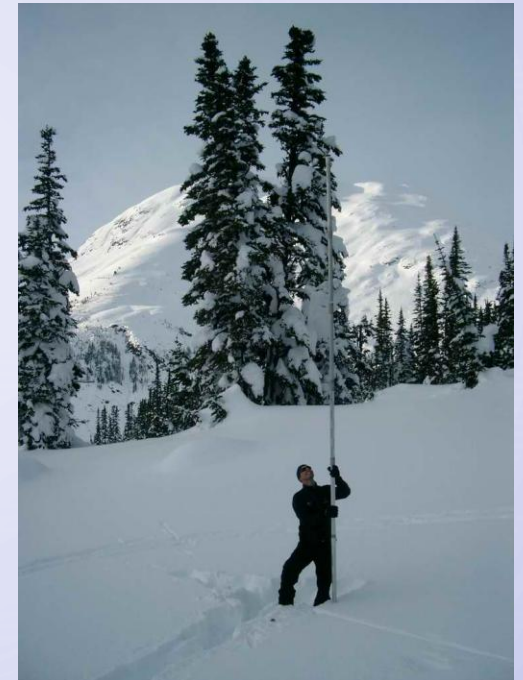


## Drought Response Levels

Level	Conditions	Significance	Objective	Target
1 (Green)	Normal Conditions	There is sufficient water to meet human and ecosystem needs	Preparedness	Ongoing reductions in community water use
2 (Yellow)	Dry Conditions	First indications of a potential water supply problem	Voluntary conservation	Minimum 10% reduction
3 (Orange)	Very Dry Conditions	Potentially serious ecosystem or socioeconomic impacts are possible	Voluntary conservation and restrictions	Minimum additional 20% reduction
4 (Red)	Extremely Dry Conditions	Water supply insufficient to meet socio-economic and ecosystem needs	Voluntary conservation, restrictions and regulatory response	Maximum reduction
Loss of Supply		Potential loss of a community's potable or fire fighting supply	Emergency response	Ensure health and safety

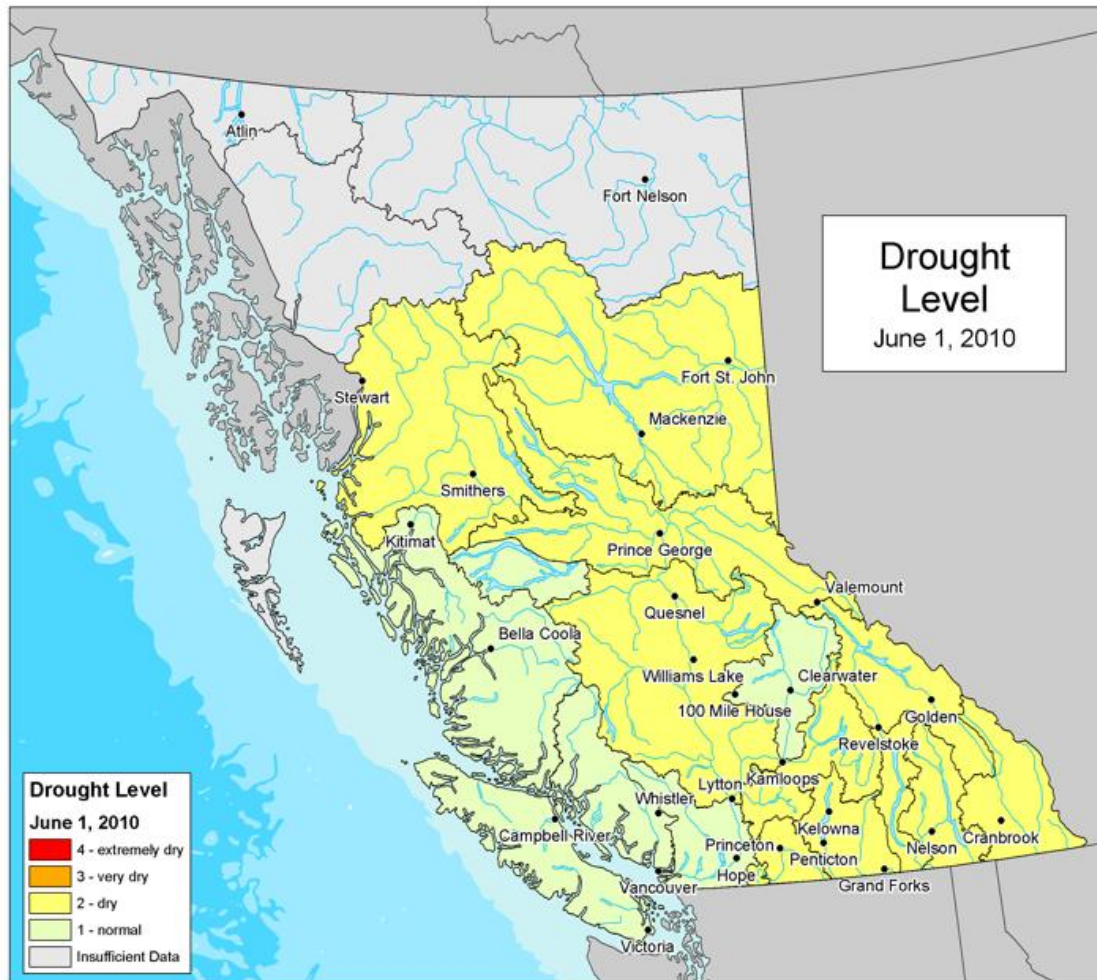
## Drought Indicators

- Pre-Drought Season
  - Basin Snow Indices
  - Seasonal Volume Runoff Forecasts
  - Precipitation Information
- Drought Season
  - 7-Day Average Streamflow
  - Precipitation Information
  - Wildfire Danger Class Ratings
  - Aquifer levels where available

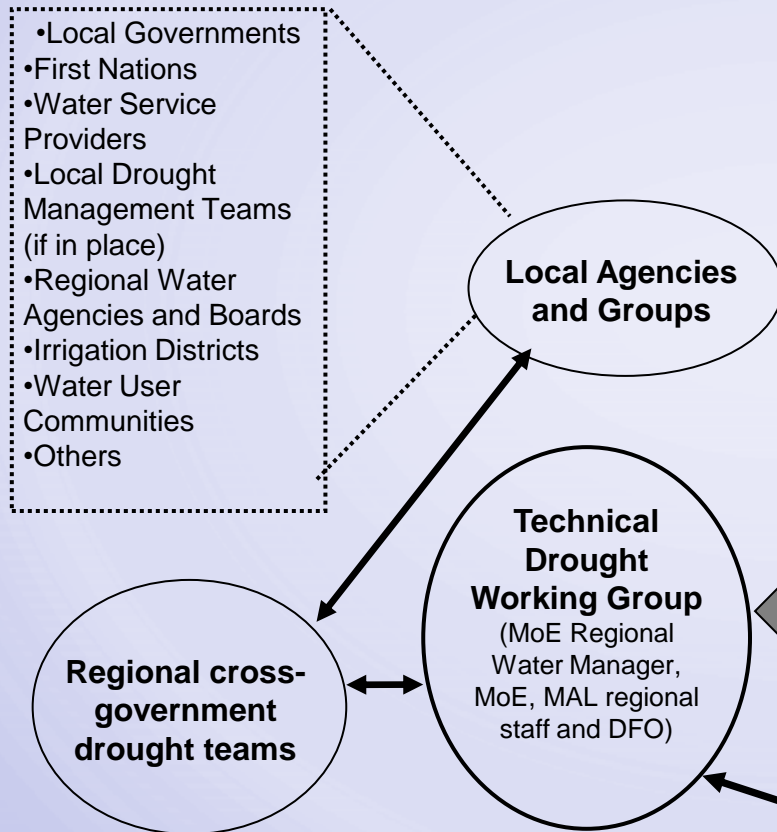




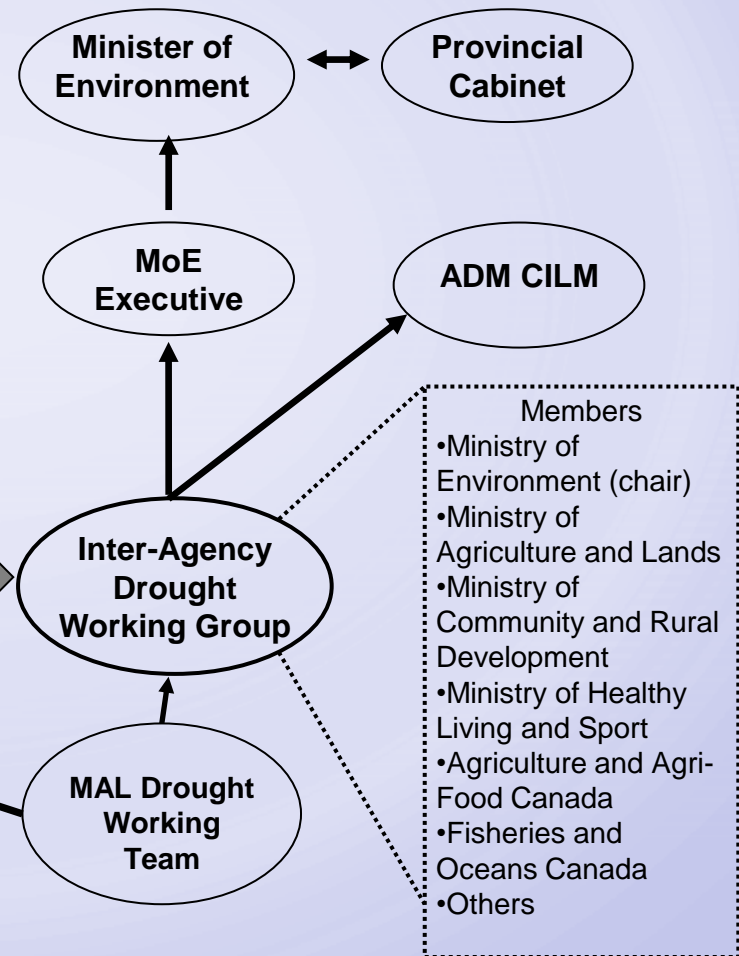
# Drought Levels Information



## Regional and Local Level Response

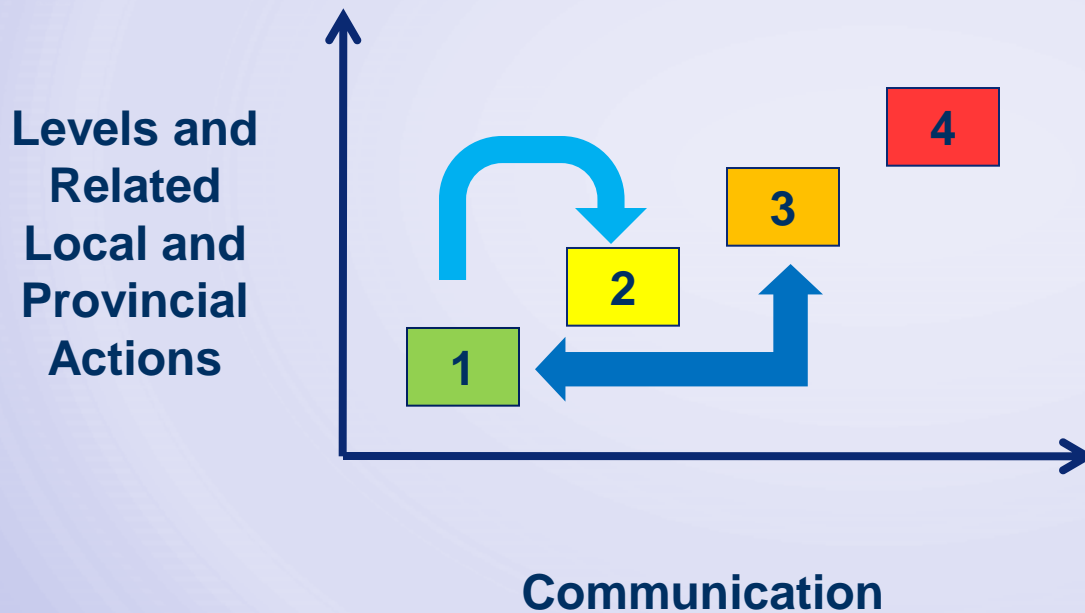


## Provincial Level Response





## Moving from One Drought Response Level to Another





## Example of Drought Response Actions

- **Level 1 – Normal Conditions**
  - **monitor streamflows and snowpack conditions; provide regular online updates**
  - **prepare and update factsheets, guidelines and policies to aid agricultural producers**
  - **implement water conservation programs; continuously improve water use efficiency**



## Examples of Drought Response Actions

- **Level 2 – Dry Conditions**
  - **issue province-wide news release and targeted news releases**
  - **where appropriate, advise agricultural producers to take early actions**
  - **use direct and indirect communications to request water licensees voluntarily work together, conserve, share water and consider in-stream needs;**
  - **increase monitoring effort**



## Examples of Drought Response Actions

- **Level 3 – Very Dry Conditions**
  - intensify communication efforts
  - encourage conservation, provide updates
  - advise high volume water licensees and request that they implement voluntary conservation measures
  - local governments implement next stage watering restrictions to achieve targeted reduction in water use; enforce compliance through bylaws



## Examples of Drought Response Actions

- **Level 4 – Extremely Dry Conditions**
  - increase frequency of communication by all levels of government and water suppliers
  - continue to issue information bulletins to all stakeholders
  - implement regulatory controls under the *Water Act*, *Fish Protection Act* or other statutes as appropriate if voluntary measures are not enough to protect water users and fish
  - provide assistance to communities seeking alternative or temporary water supplies



## Next Steps

- Drought Response Plan is now available on [livingwatersmart.ca](http://livingwatersmart.ca)
- Complete stakeholder input report by end of August 2010
- Email to drought workshop participants to let them know about the reports
- Living document that will be updated after the season (in late fall)