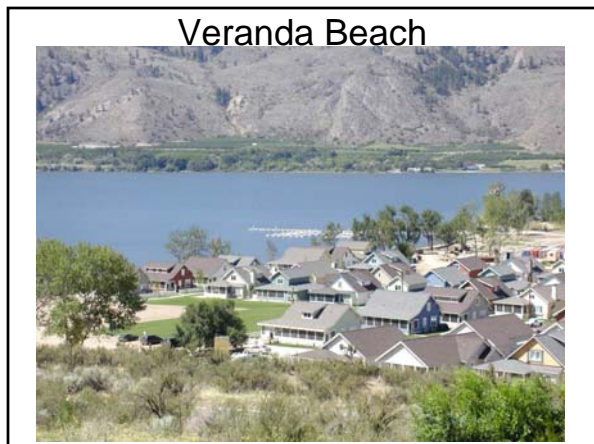
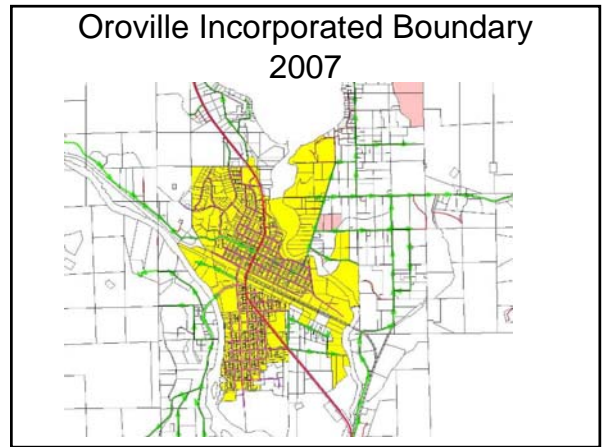
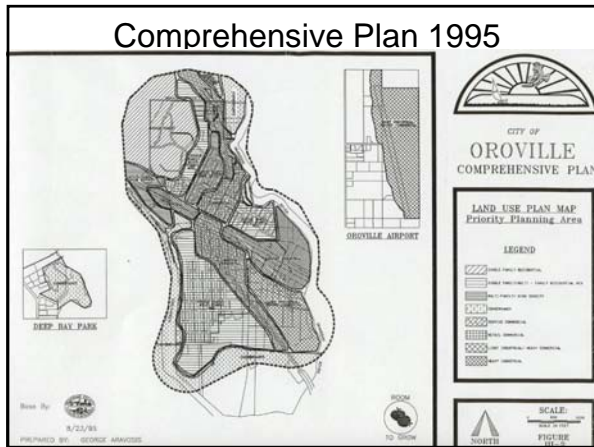
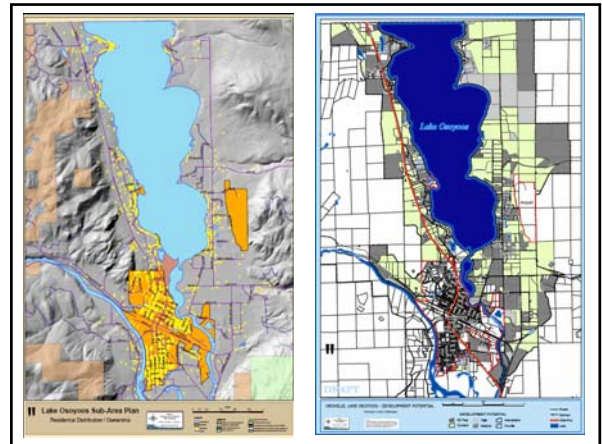



Welcome to
Oroville Washington

**Keeping up with the Canadians –
Planning In the Wake of Growth.**
 or
**Growth on Lake Osoyoos
Our End of it...**

Presenter:
 Chris Branch
 Planning and Community Development Director
 City of Oroville
 Ph: 1-509-476-2926 ext. 16
 E-mail: chrisb.oroille@nvinet.com



Population/Water Use Statistics

- Oroville Population – est. 1700 persons
- Unincorporated Population around Lake Osoyoos (US Side) est. 800 persons
- Estimated Total 2500 persons=1500 equivalent residential units (eru)
- Projected Population within Oroville Urban Growth Area 2020 = 3516=1962 water eru

WATER USAGE

Area	ERU
North End Water Users and Eastlake	210 gpd.
City Limits	422 gpd.
Combined	360 gpd.
Total ERU Count for 2001	
City Residential	791
Commercial	310
North End & Eastlake Residential	180
Commercial	13
Total ERU's	1,294

Table 2 - Supply Capacity Table

System Demand	Supply Capacity					Water Rights (1)
	ERU's	MGD AFYr	Wells (MGD)	MWD (MGD)	PRD (MGD)	
Existing Service Area (1, 2)	1,197	223 MGD	0.60	800	1,500	
Current (2007)		475 gpd				
6-year (2009)	1,649	340 MGD	0.66	900	1,600	
20-year (2027)	2,061	400 MGD	0.82	1,200	2,000	
Legend (3)						
Legend (3) (1)	302	60 MGD	0.11	137	274	
Legend (3) (2)	172	32 MGD				
Legend (3) (3)	472	93 MGD	0.18	237	354	
Legend (3) (4)	172	32 MGD				
Legend (3) (5)	0	0	0	0	0	
Total Demand (Existing Service Area plus Legend)						356.8 MGD 1995 AF (1 mgd)
2009 (see Ph. 2)	1,649	340 MGD	0.73	1,027	1,814	
2027	2,061	400 MGD	1.00	1,437	2,344	
Supply Capacity Balance Available (1, 3)						
Year	Water Rights (1)	Supply Capacity Balance (3)				
2009	6,340	3,37	1,013	246		
2027	8,340	2,39	703	184		

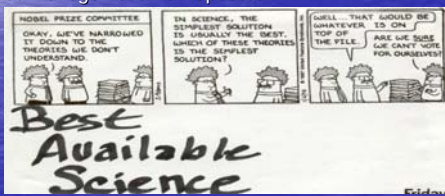
(1) From Mar 2001 WSP, does not include potential 712 AF On Basin Legend Reservoir (132 AF for Phase 1 Legend).
 Above 0 is to be included in Legend water rights monthly by city administration at this time.
 (2) 80% of total present pumping capacity, all wells.
 (3) Water demand from French's Contribution is 4.1 mgd/minute value total 1017700.
 (4) MWD based on alternate 60 day summer demand (no one day peaking factors, plus storage area 100, long summer value from the French 107700 value for "Summer Demand" not included in Phase 1 "Upper Contour" and "Lower Contour" in 20 yrs. GWD Closure mitigation is not included (assumed provided by OTR) or other non-city sources.
 (5) From PRD for Legend, not 2.0 times summer demand plus 60 day summer summer demand.
 Based on Source Capacity above above, except MGD AF based on Water Rights above above, not including French's Reservoir.
 (6) The figure above under the ERU column for Legend is simply the ERU count, not including effect of long demand.
 (7) The PRD capacity balance available above above is available only. OTRD is not from supply within the storage. This is monthly at this for the Legend area due to its variable flow regime.
 (8) These ERU figures from the WSP for the existing service area appear to include an unknown number for the Eastlake area. The projected water service area demand is being revised to reflect the growth potential and development based growth that is expected to occur in the Eastlake area as a result of the French Reservoir.
 (9) These ERU figures from the WSP for the existing service area appear to include an unknown number for the Eastlake area.

Water Quality Programs



Growth Management Programs and Initiatives Underway

- Water Management and Planning
- Water Rights and Resource Acquisition
- Critical Areas Ordinance Updates to include Best Available Science
- Flood Management Plan Updates



Growth Management Programs and Initiatives Underway (cont.)

- Comprehensive Plan Updates (partly funded)
 - Joint Count/City Public Participation
 - Updates to both County/City Plans reviewed and reconciled.
- Shoreline Master Program Updates (funded)
 - County-wide Policy Development, Inventory and Analysis in progress
 - County/City Master Program Development and Adoption

Initiatives and Projects on the Horizon

- Storm water Management Planning and Implementation
- Wastewater Treatment Facility Upgrades
- Water Resource Development
- Annexation of Urban Growth Area
- Riparian Restoration

Major Emphasis in Planning and Implementation

- Best Management Practices in all development.
- Slow things down when necessary to ensure wise decisions.
- Maximize utilization of existing regulatory tools to avoid non-reversible consequences.
- And, above all.....

Sustainable Economic Vitality

