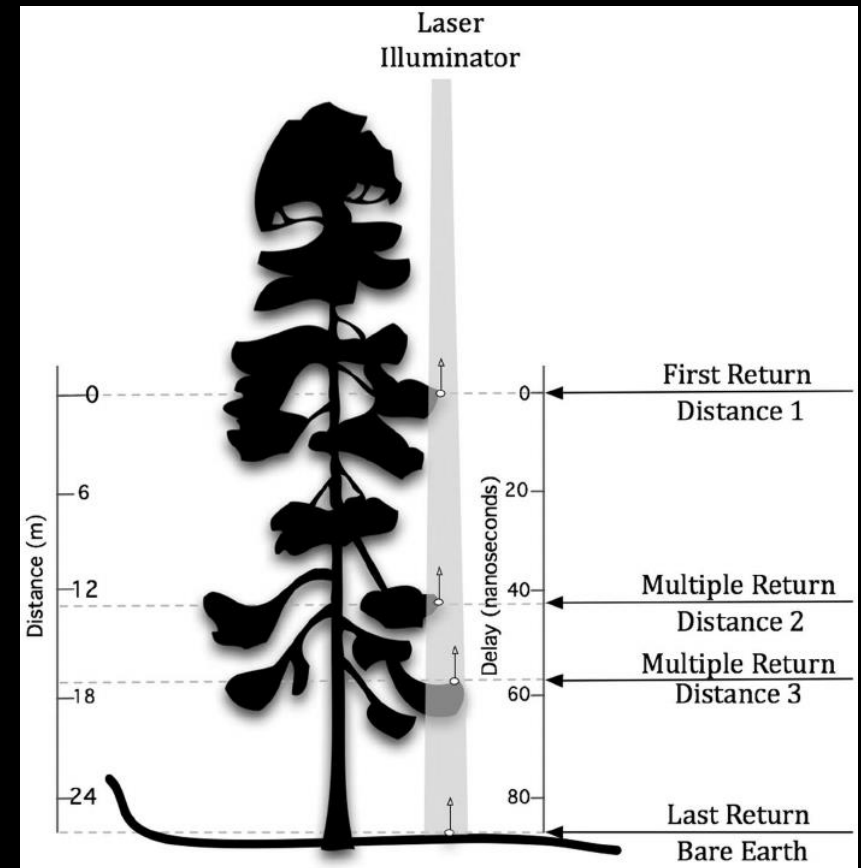
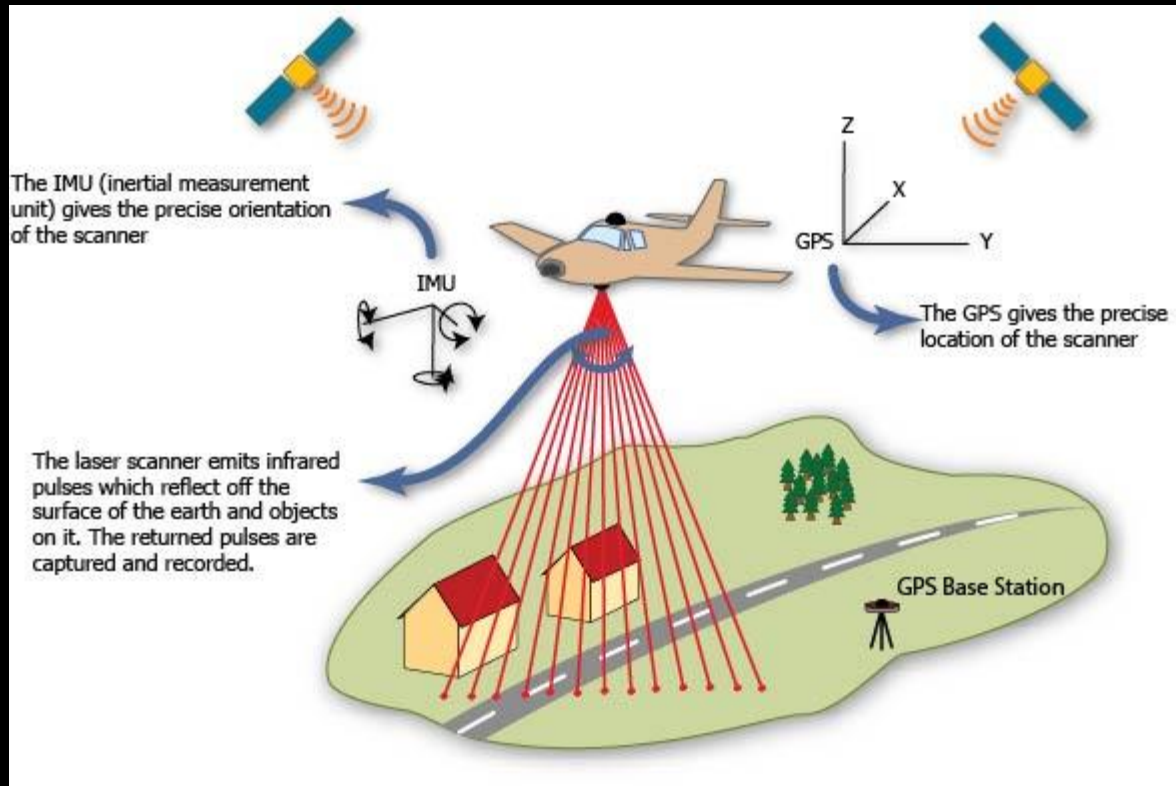




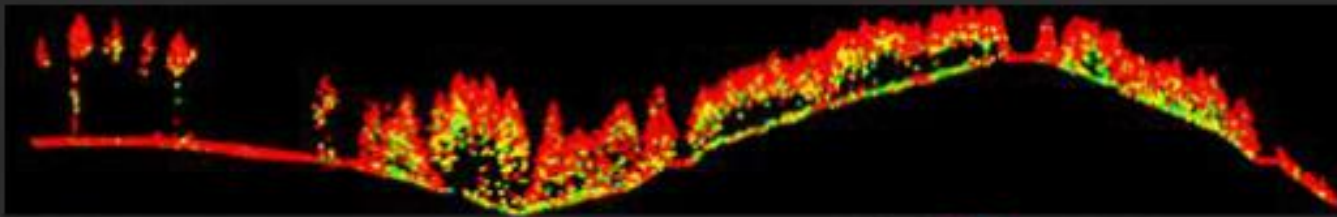
Geographic Information Systems: State of the art & applications with Lidar data

Dr. Mathieu Bourbonnais
Okanagan Water Stewardship Council
October 11, 2018

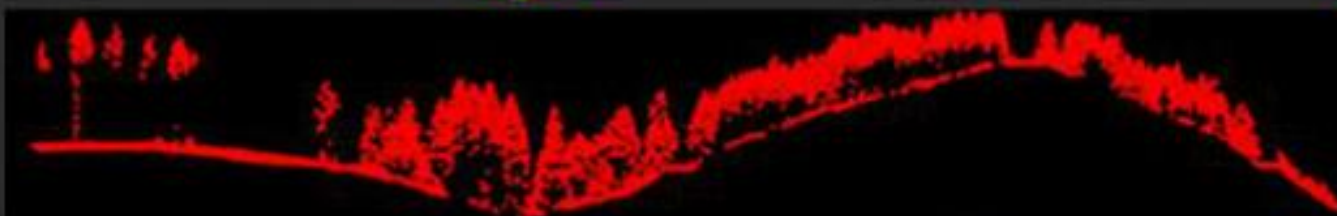
Lidar



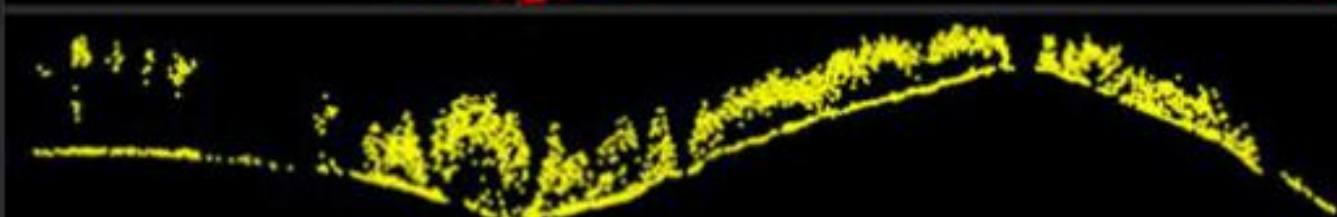
Garcia-Feced et al. 2011



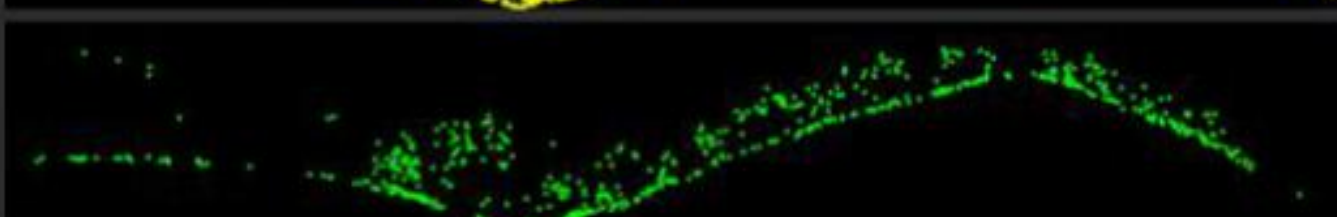
All returns (100%)



1st returns (69%)



2nd returns (26%)



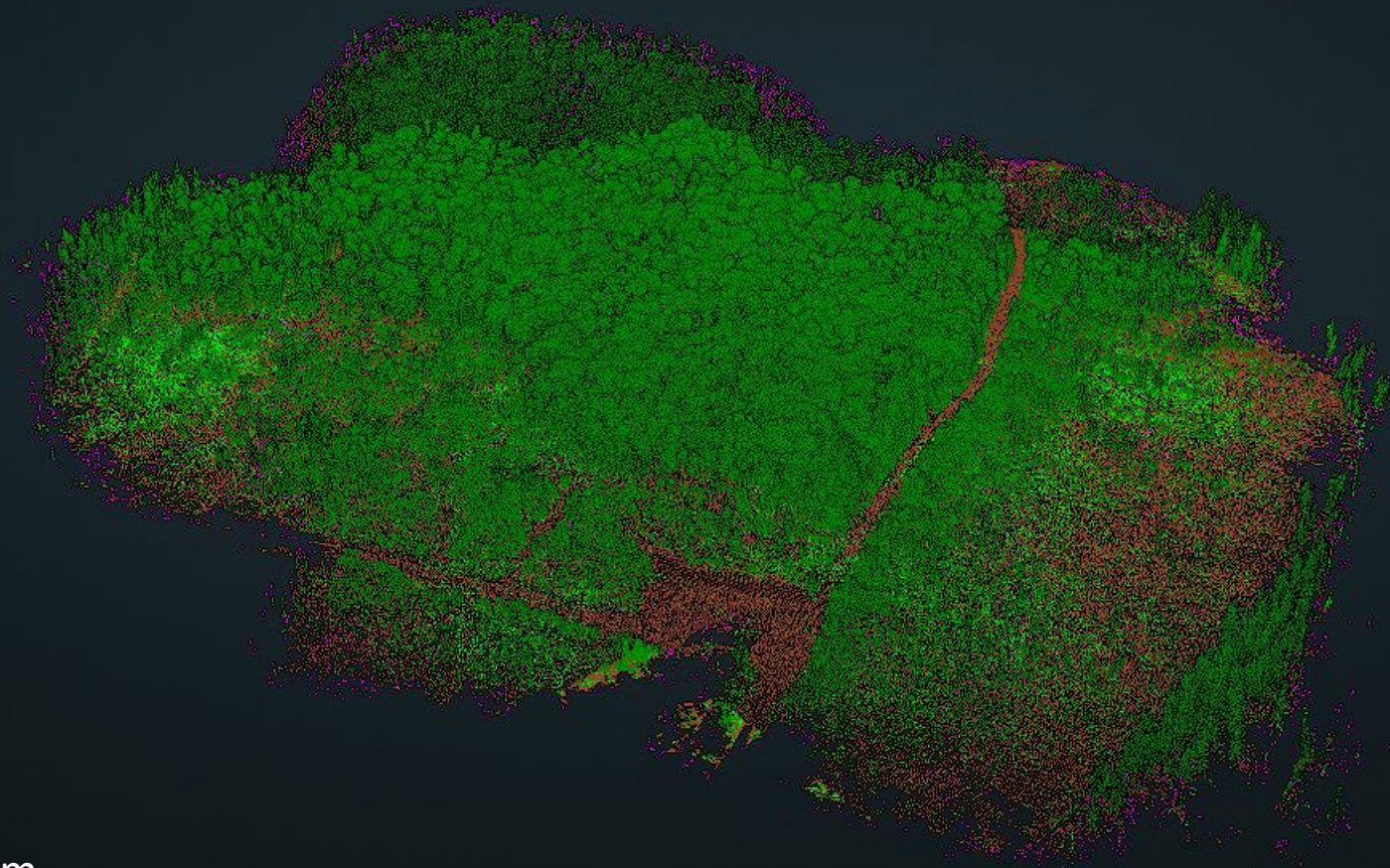
3rd returns (4%)



4th returns (<0.1%)

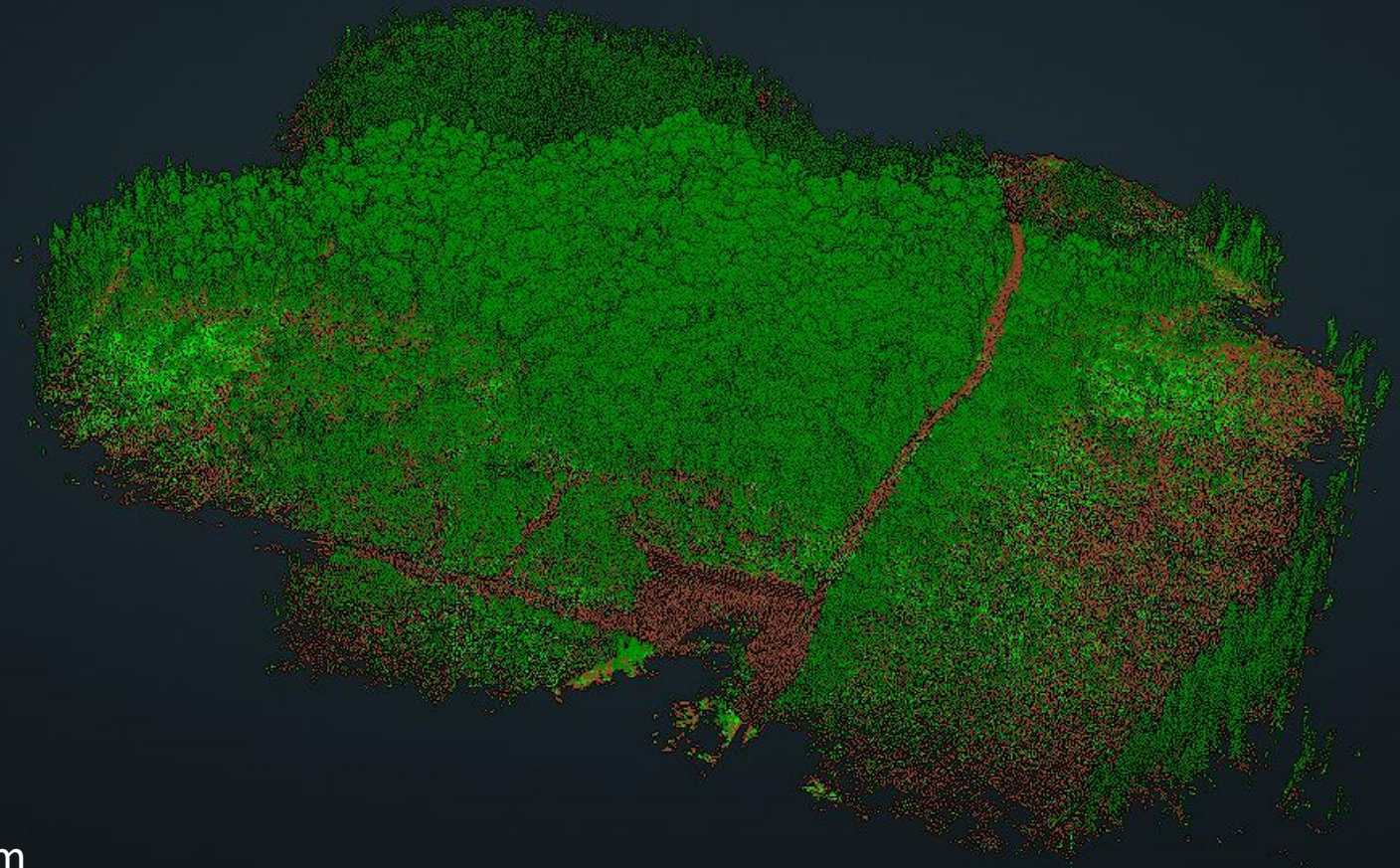
CLASSIFICATION FILTER

- ☐ Never Classified
- ☐ Unclassified
- ☒ Ground
- ☒ Low Vegetation
- ☐ Medium Vegetation
- ☒ High Vegetation
- ☐ Building
- ☒ Low Point(Noise)
- ☐ Powerline
- ☐ Water
- ☐ Overlap



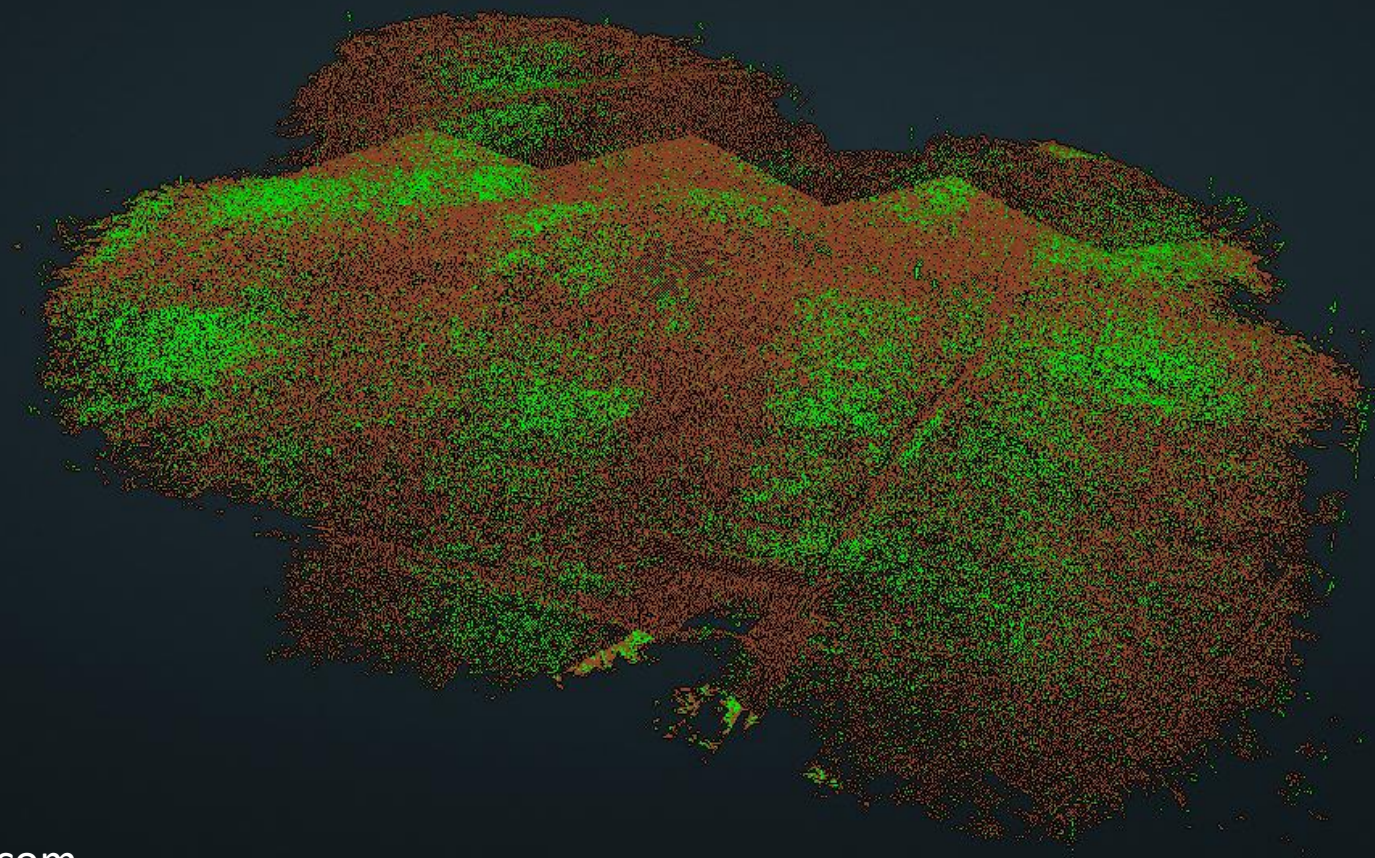
— CLASSIFICATION FILTER —

- ☐ Never Classified
- ☐ Unclassified
- ☒ Ground
- ☒ Low Vegetation
- ☐ Medium Vegetation
- ☒ High Vegetation
- ☐ Building
- ☐ Low Point(Noise)
- ☐ Powerline
- ☐ Water
- ☐ Overlap



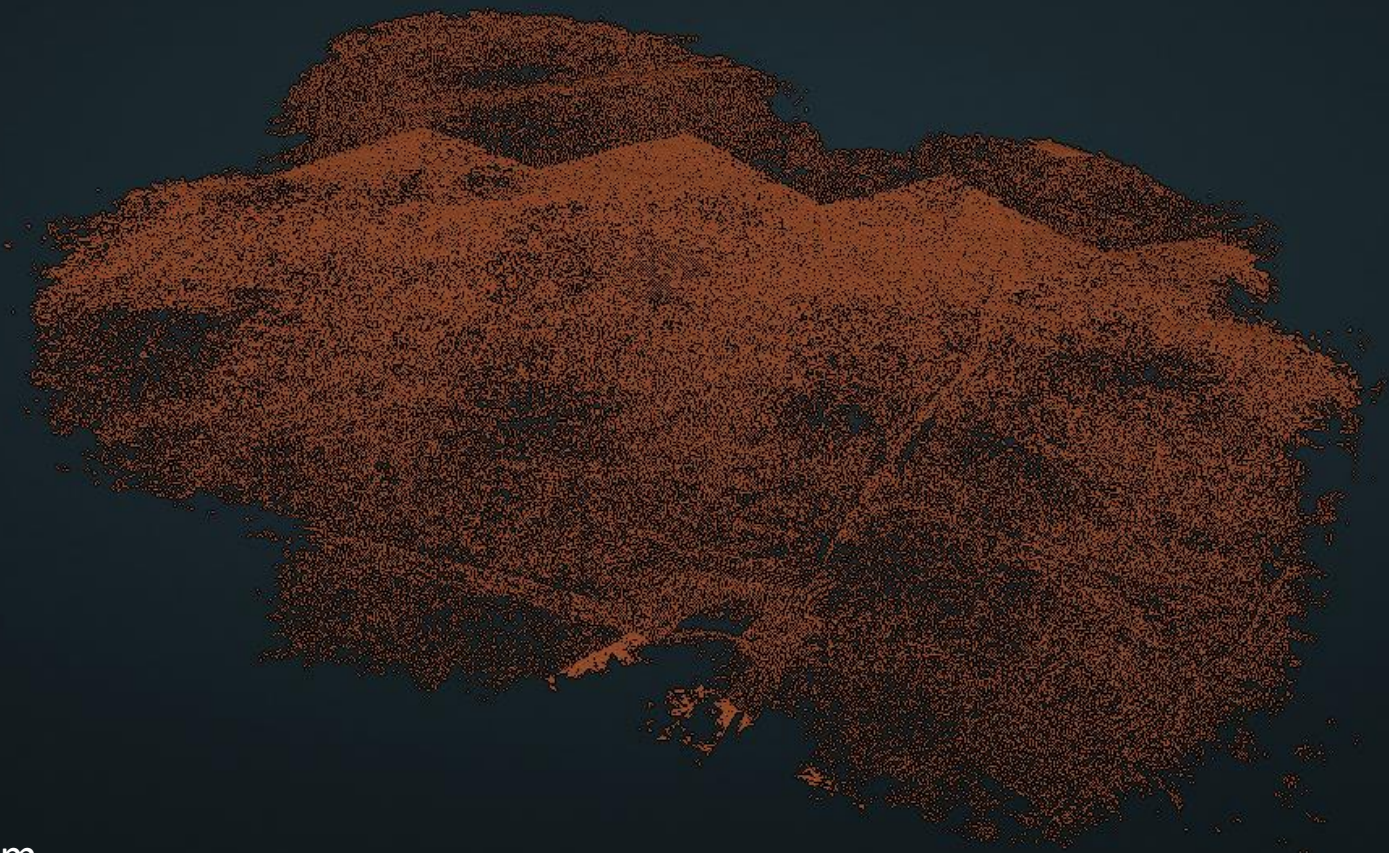
— CLASSIFICATION FILTER —

- ☐ Never Classified
- ☐ Unclassified
- ☒ Ground
- ☒ Low Vegetation
- ☐ Medium Vegetation
- ☐ High Vegetation
- ☐ Building
- ☐ Low Point(Noise)
- ☐ Powerline
- ☐ Water
- ☐ Overlap

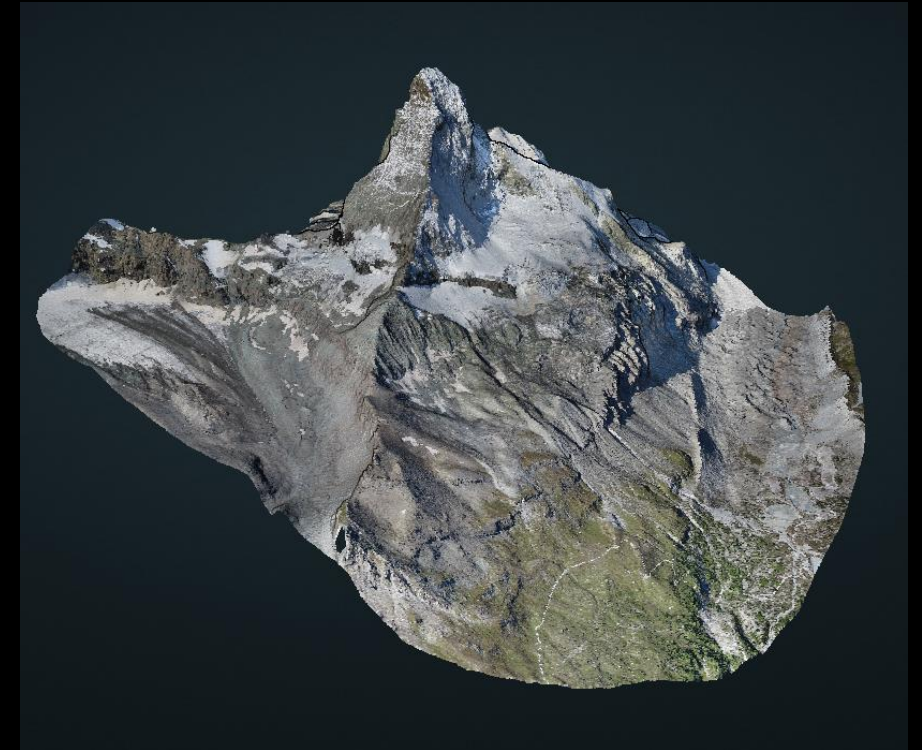
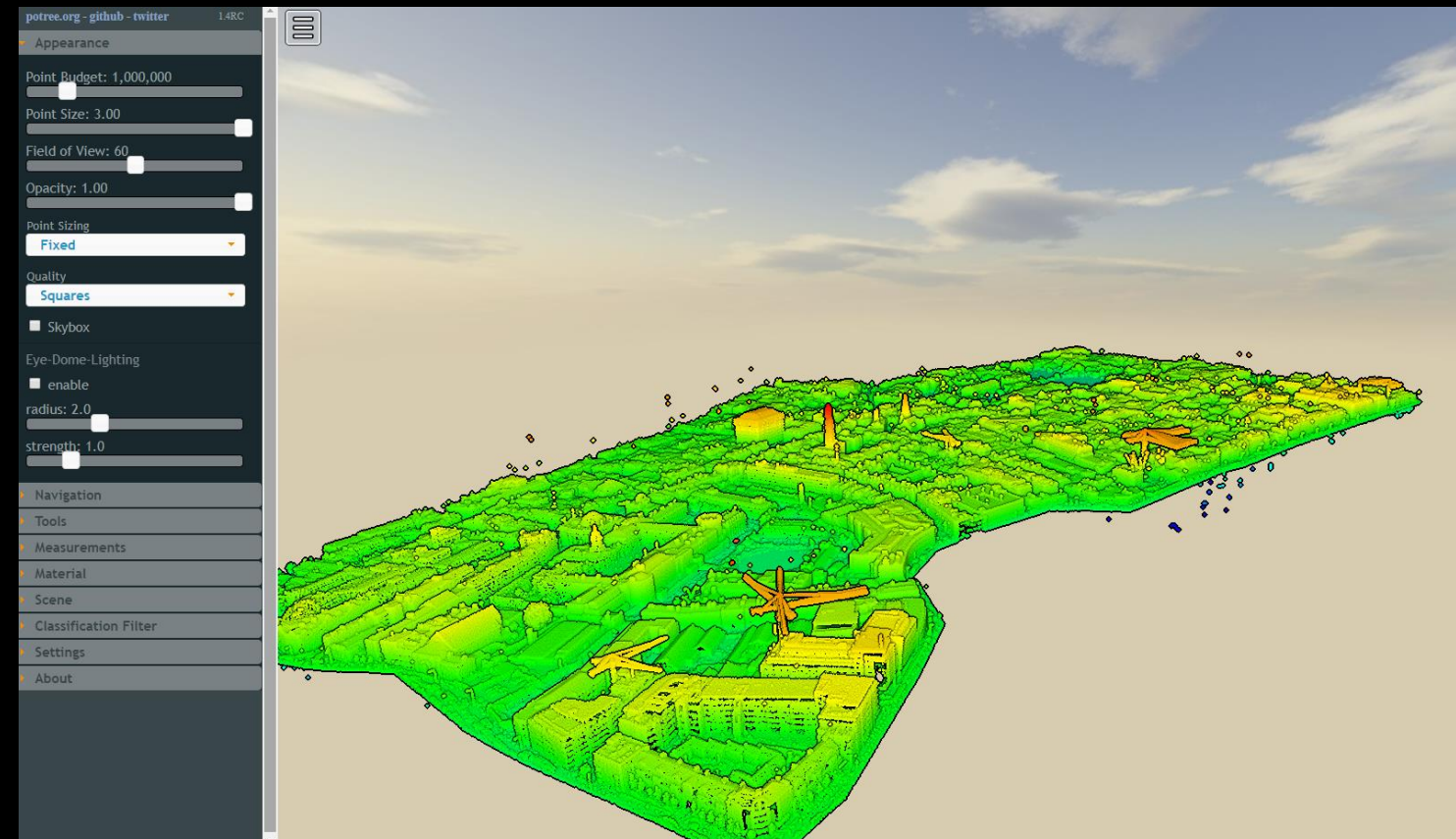


— CLASSIFICATION FILTER —

- ☐ Never Classified
- ☐ Unclassified
- ☒ Ground
- ☐ Low Vegetation
- ☐ Medium Vegetation
- ☐ High Vegetation
- ☐ Building
- ☐ Low Point(Noise)
- ☐ Powerline
- ☐ Water
- ☐ Overlap



potree.org



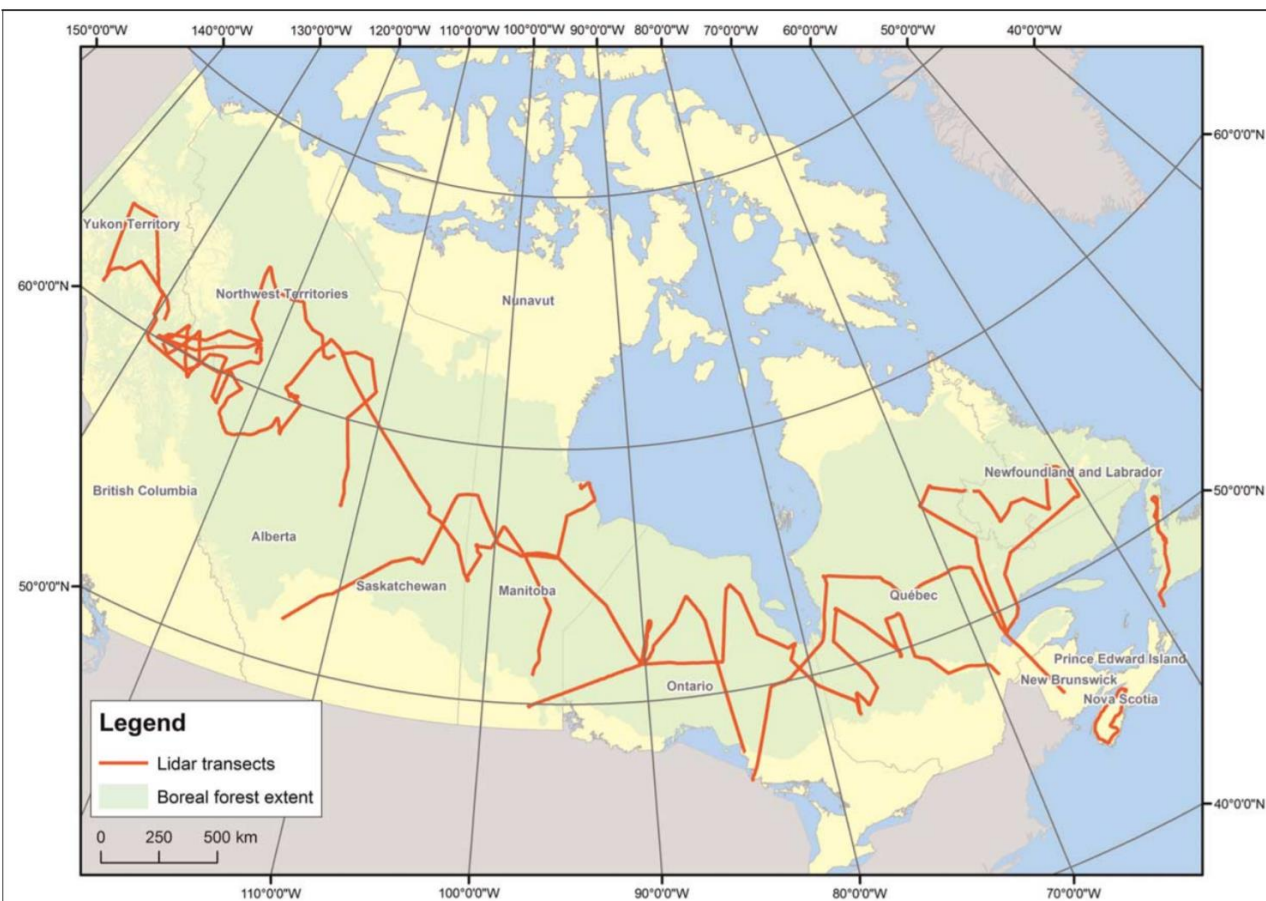
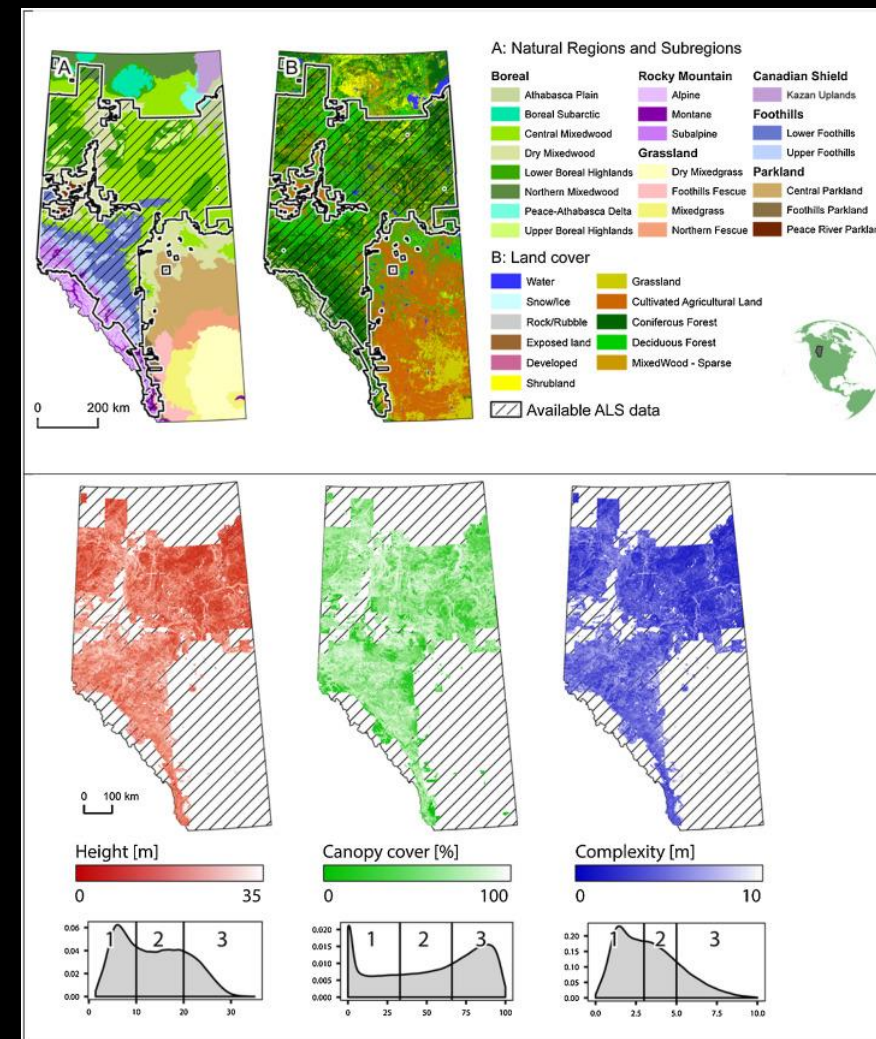


Figure 3. Map displaying the 34 flight lines acquired in the summer of 2010 that together make up the boreal case study lidar transect dataset.

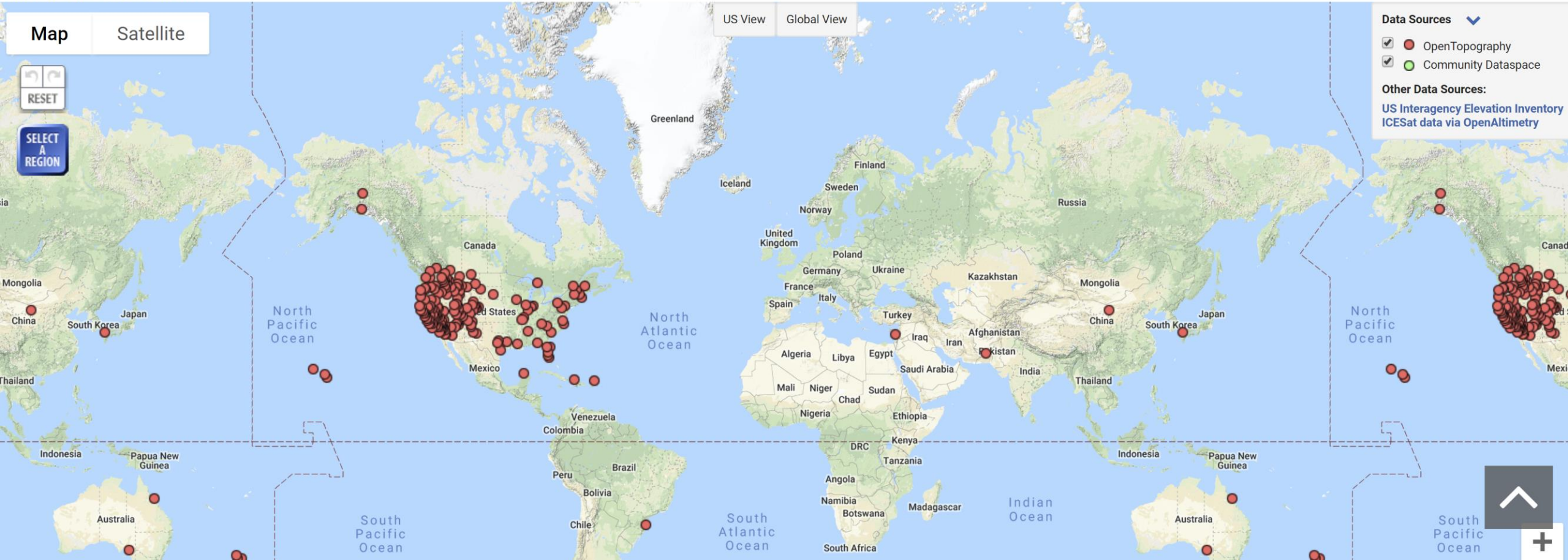
Wulder et al. 2012



Coops et al. 2016

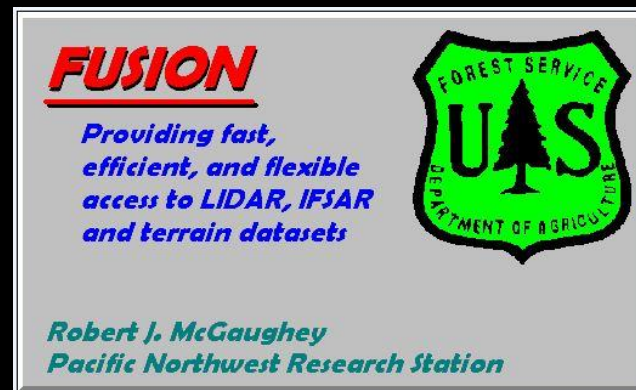
Find Topography Data

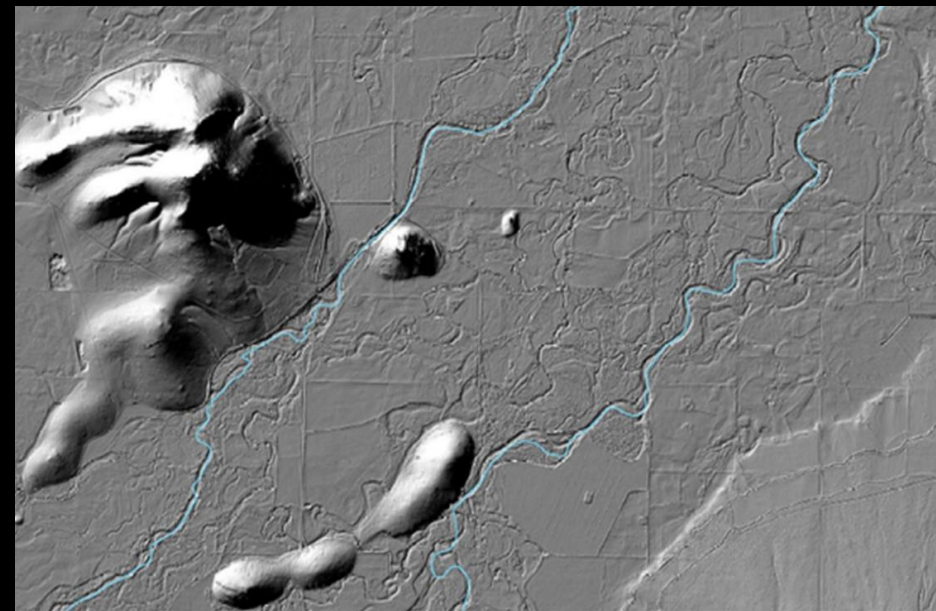
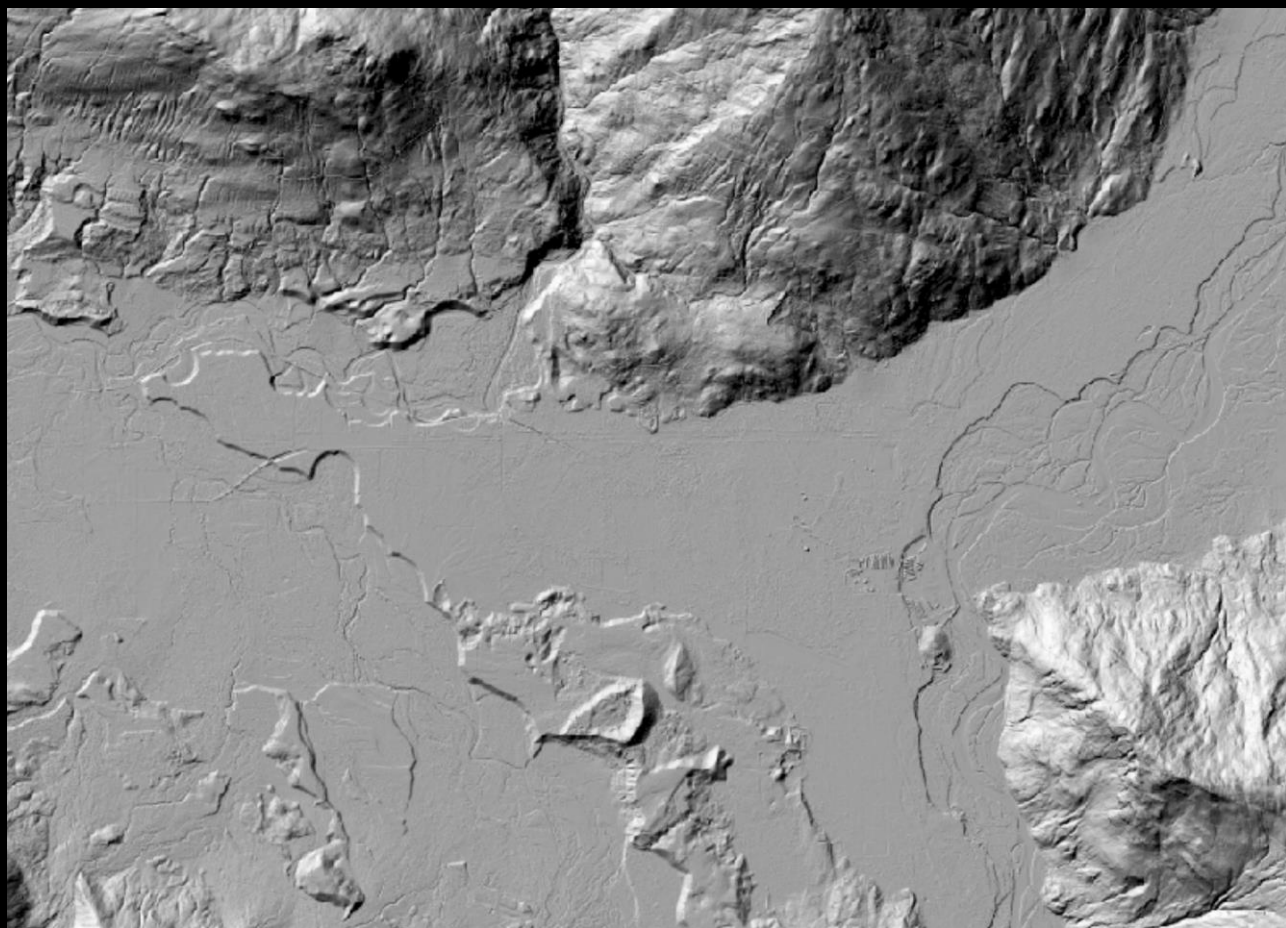
Information and Instructions



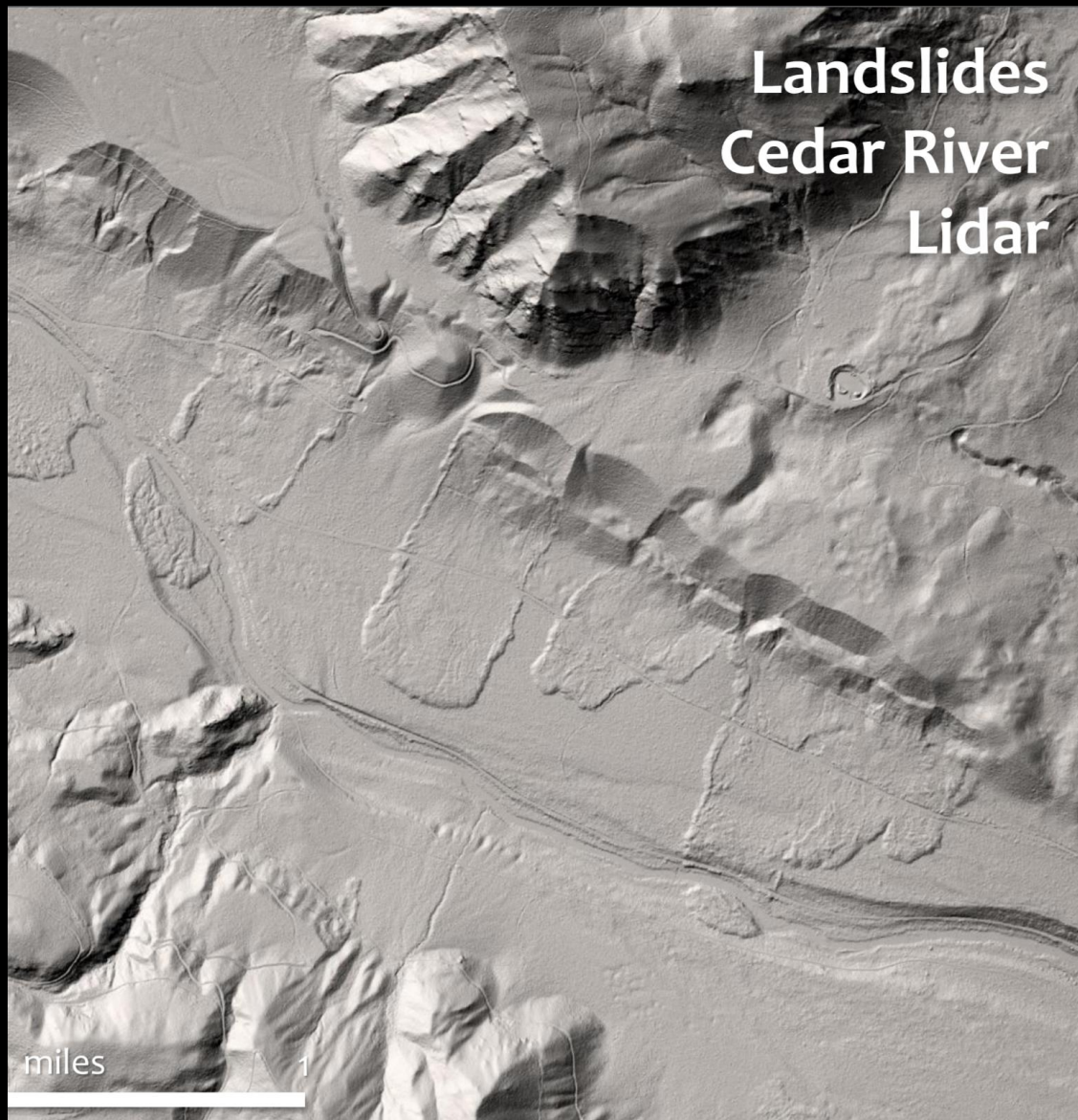


GOT RAM?
And a BIG hard drive?

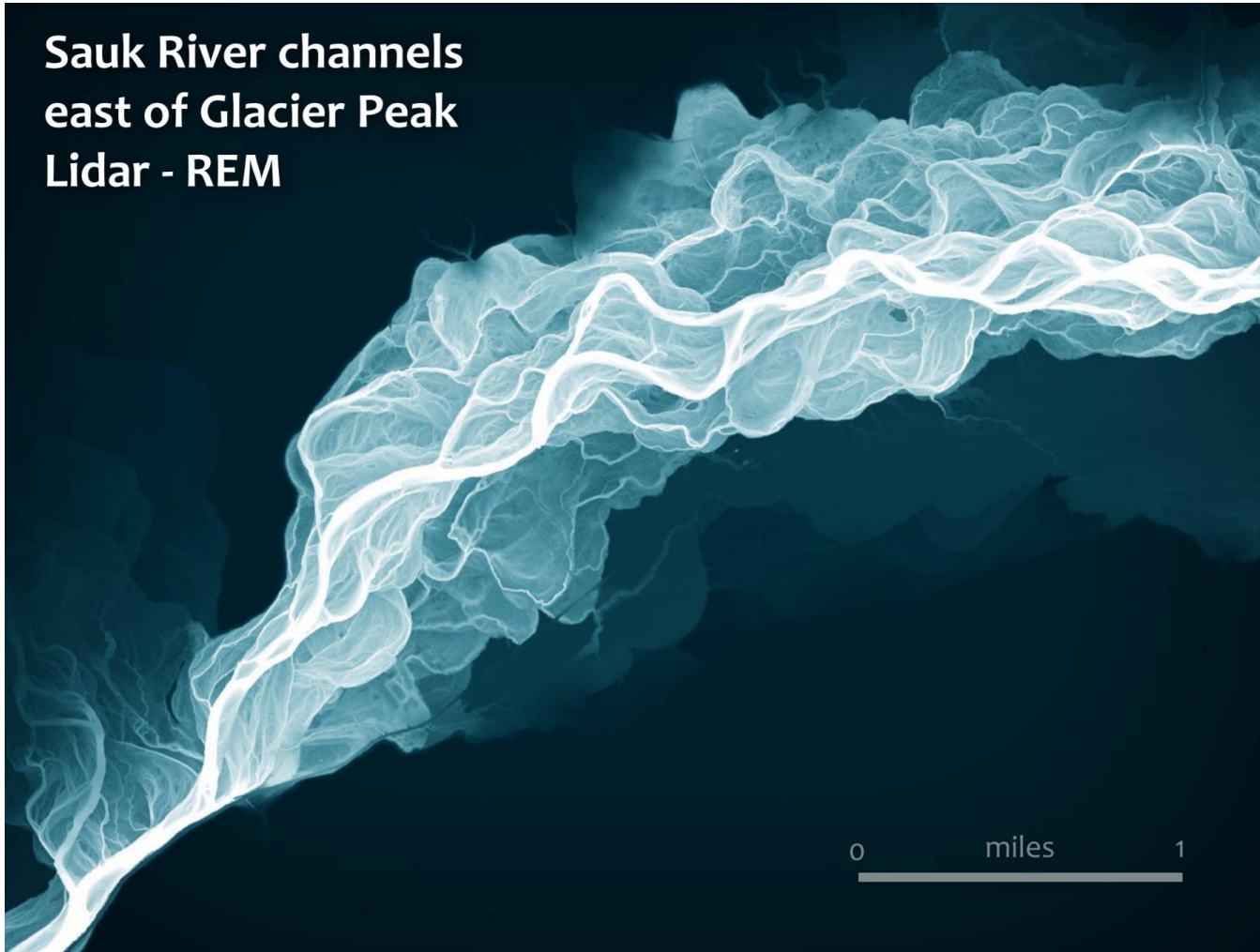




Stoker et al. 2016



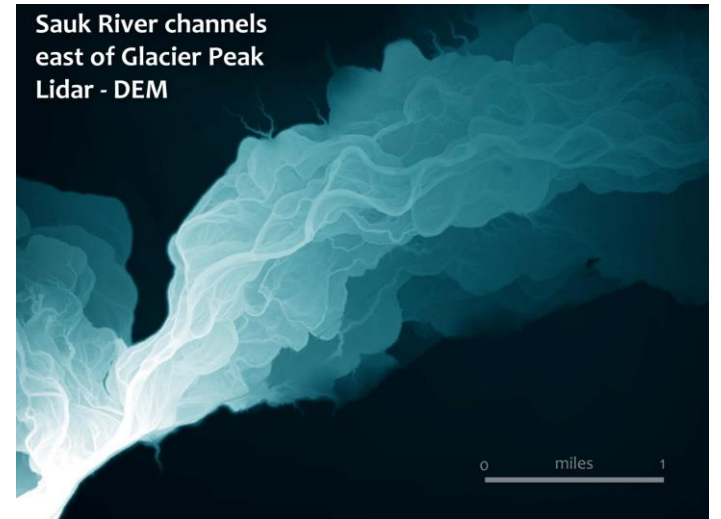
**Sauk River channels
east of Glacier Peak
Lidar - REM**



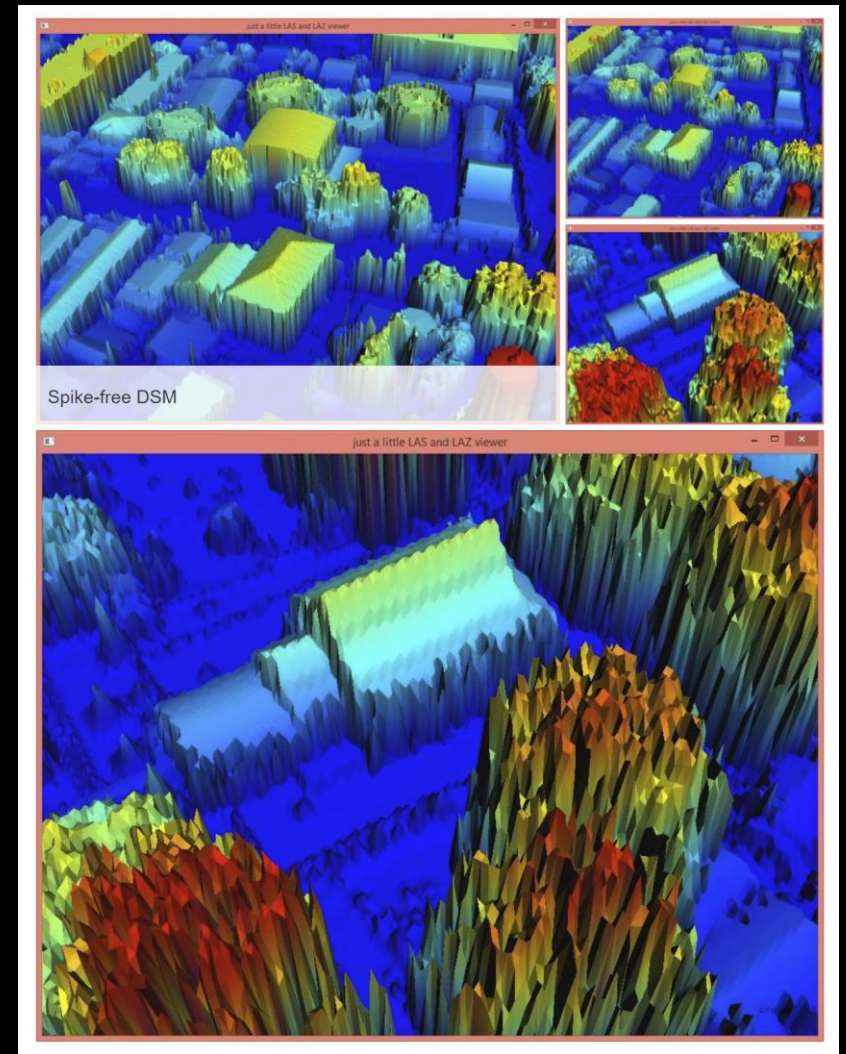
**Sauk River channels
east of Glacier Peak
Photo**



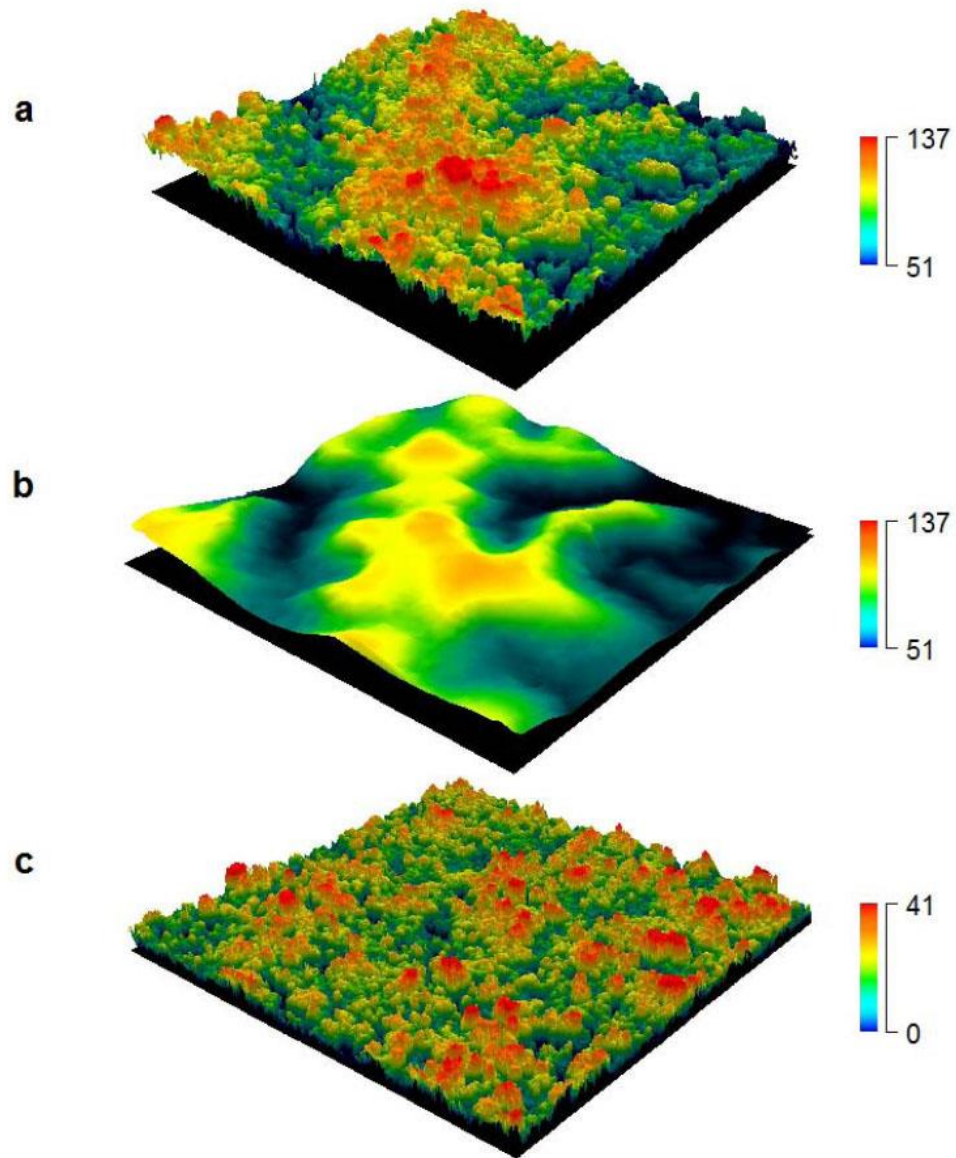
**Sauk River channels
east of Glacier Peak
Lidar - DEM**



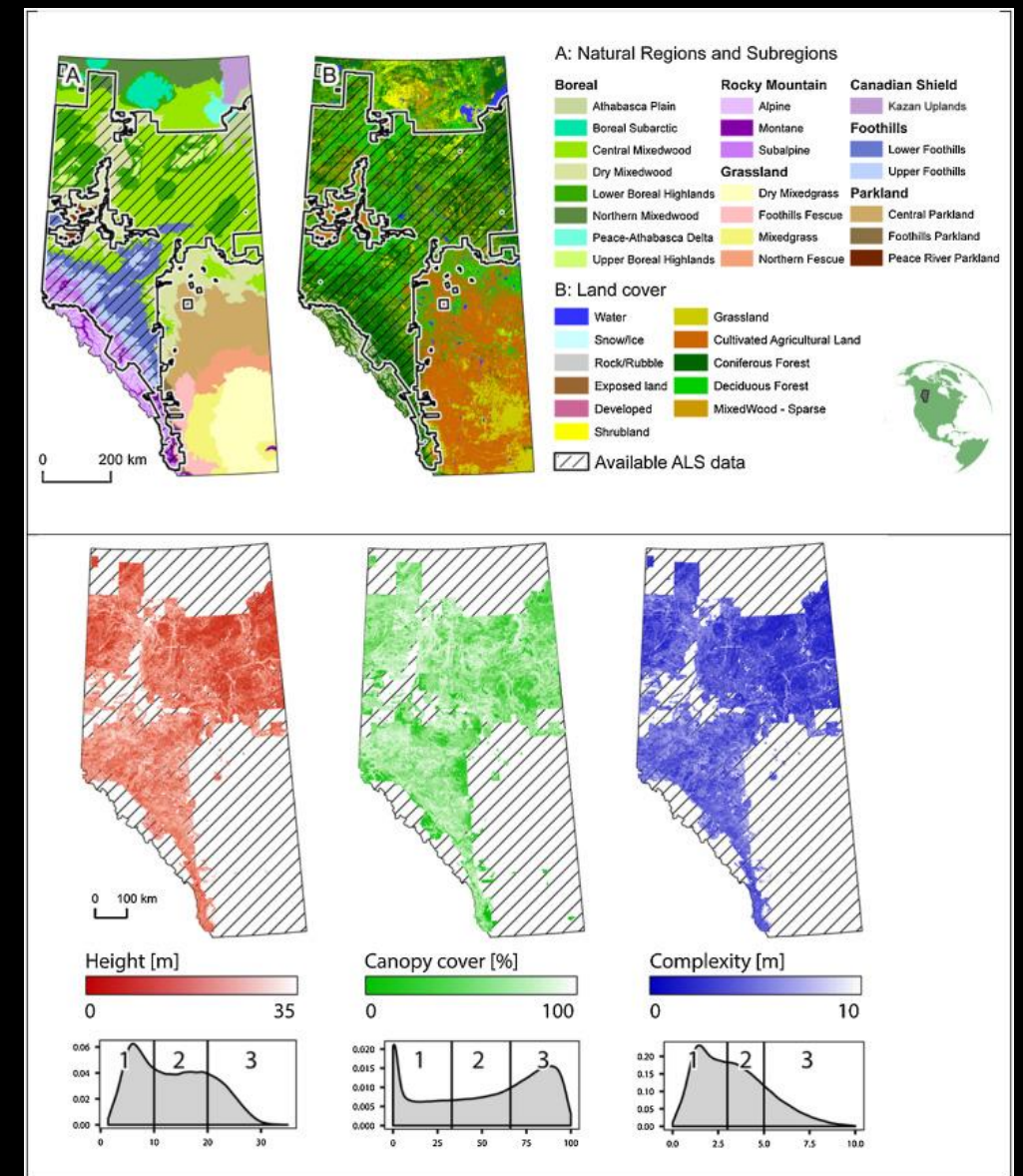




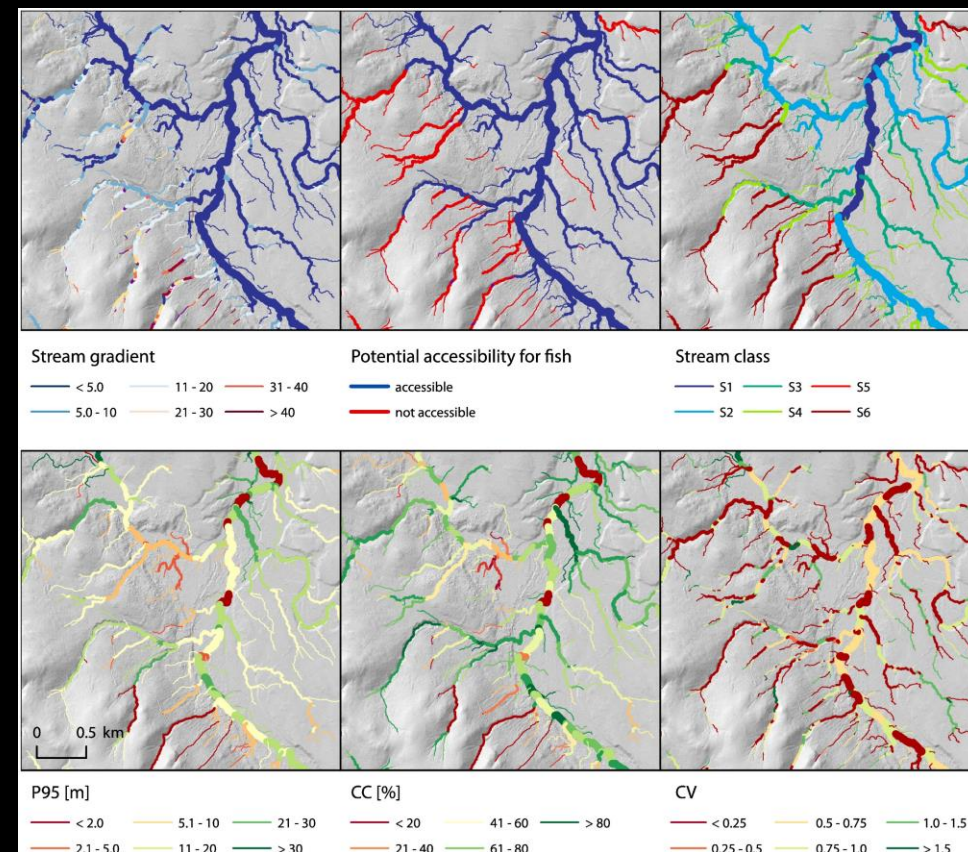
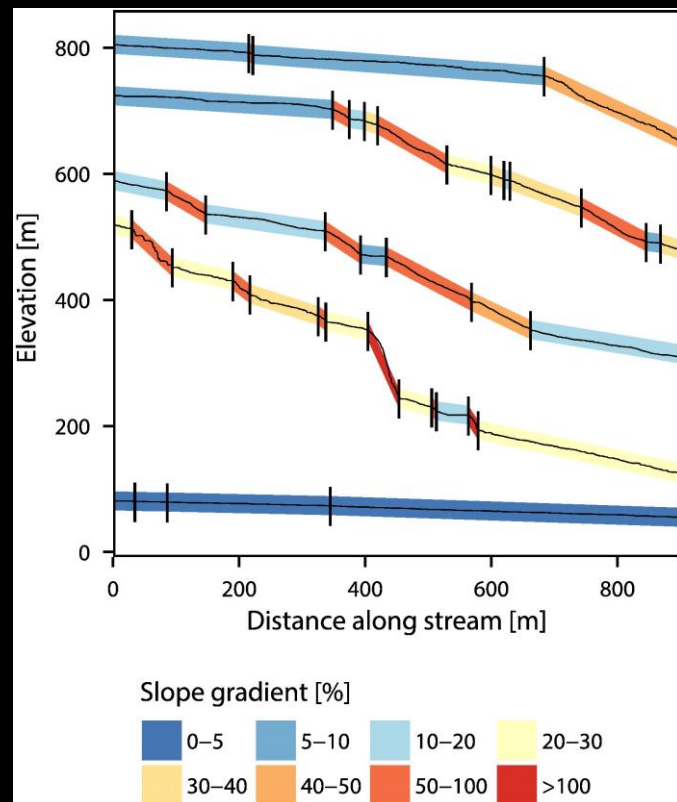
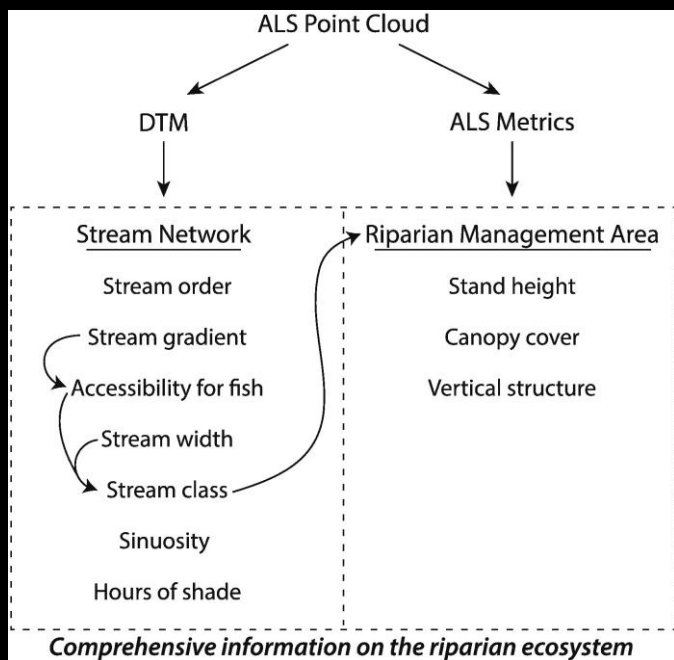
Rapidlasso.com



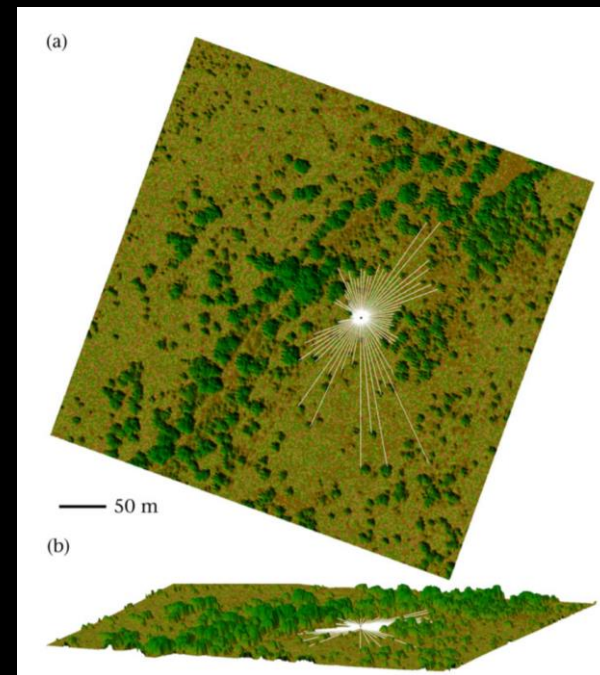
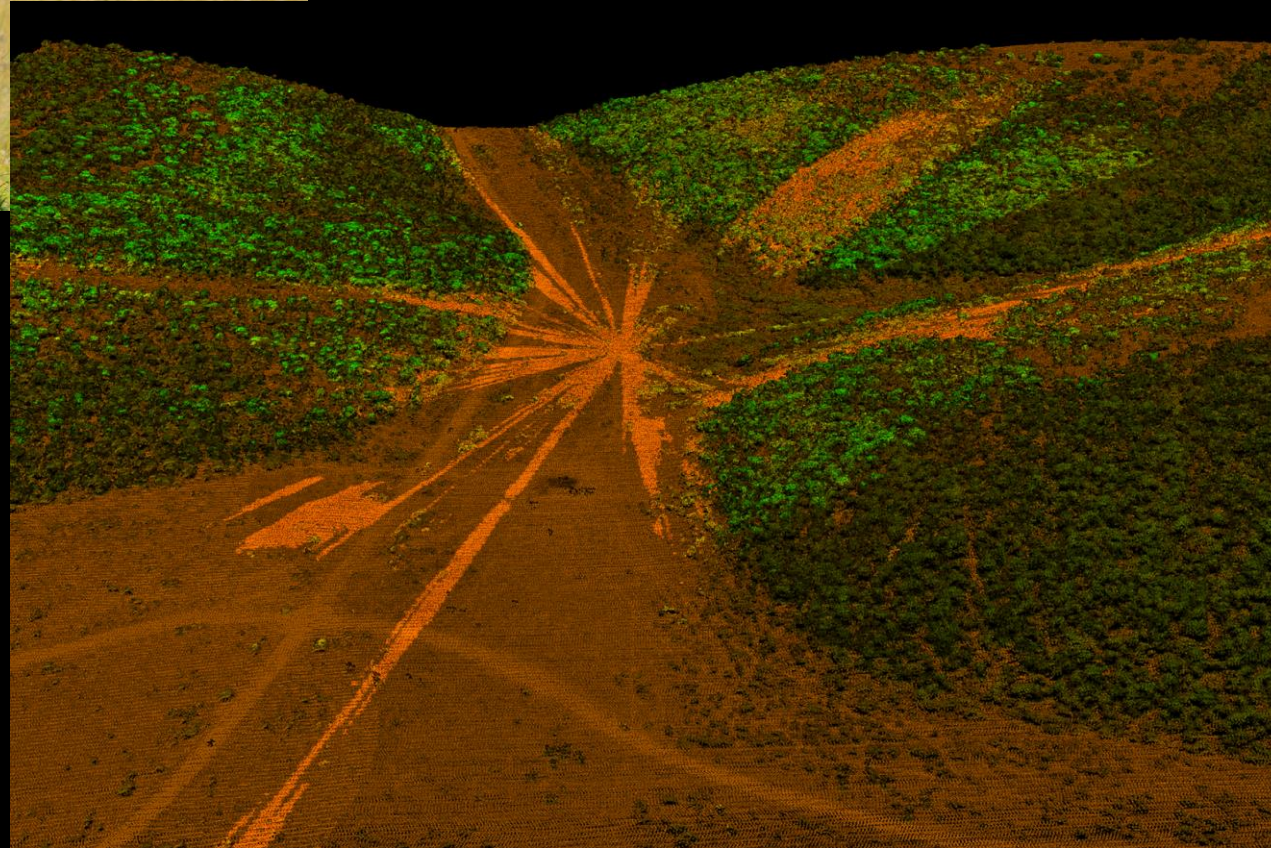
Kelner et al. 2009



Coops et al. 2016

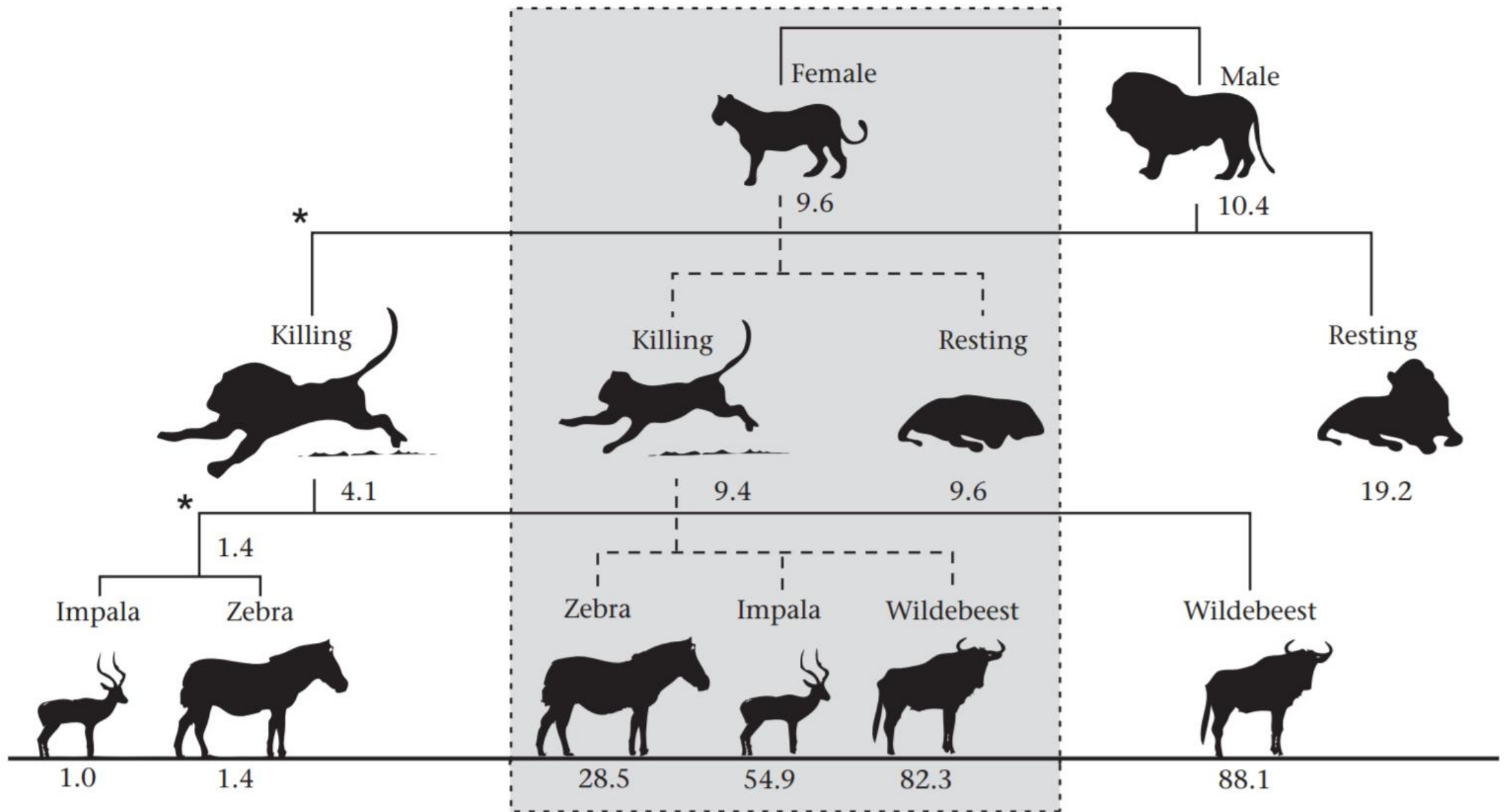


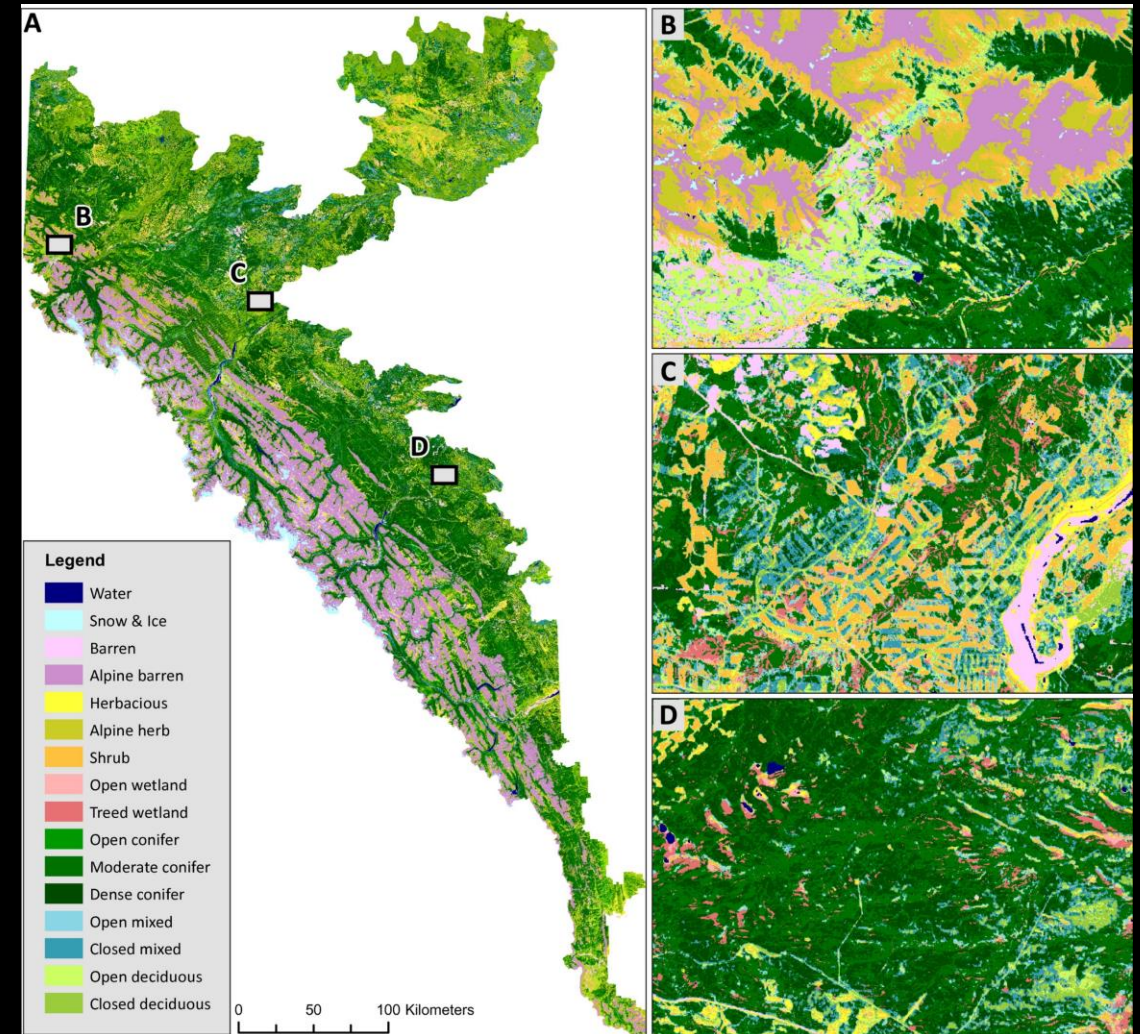
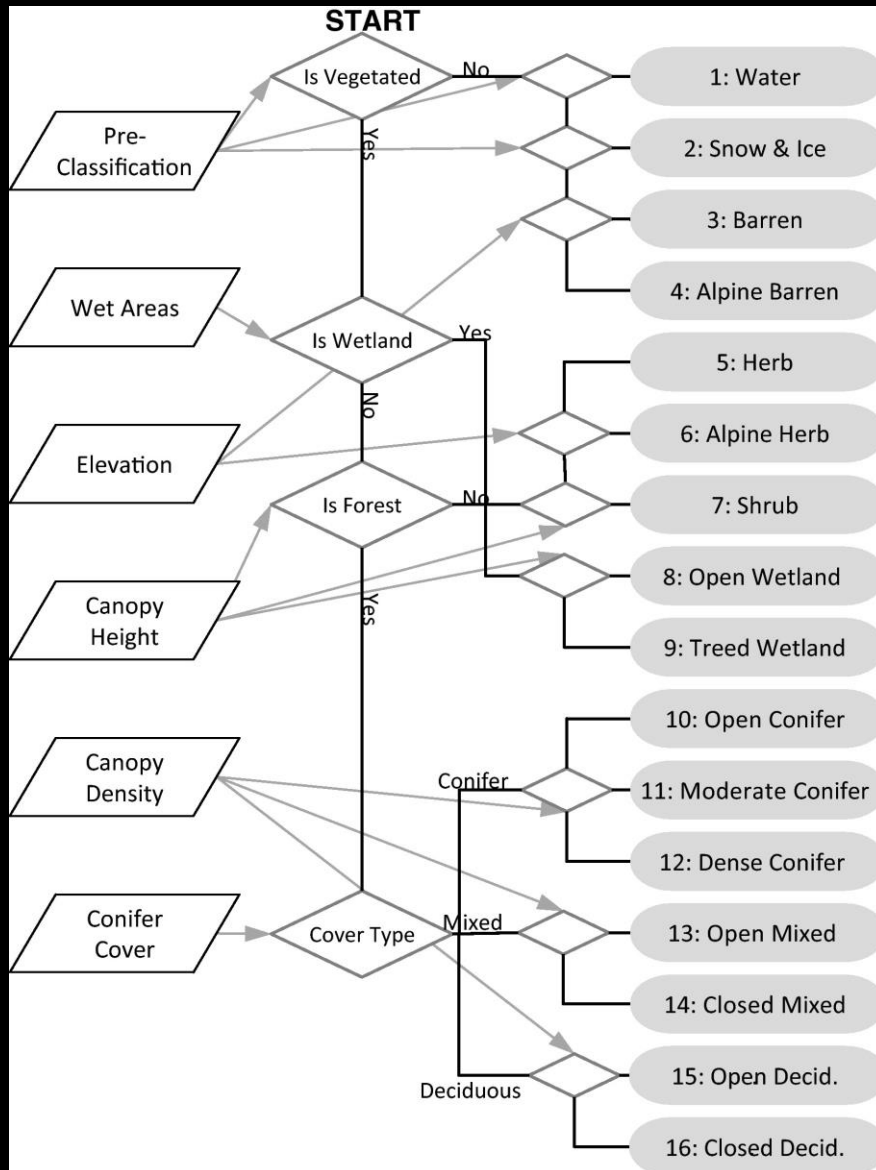
Tompalski et al. 2017

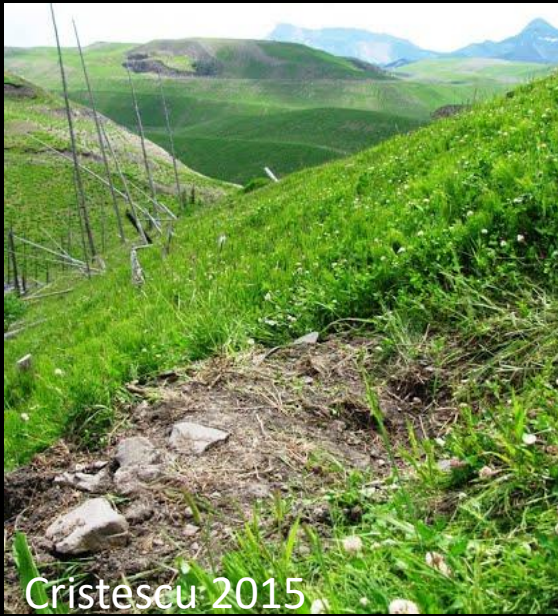


Loarie et al. 2014; Davies et al. 2016

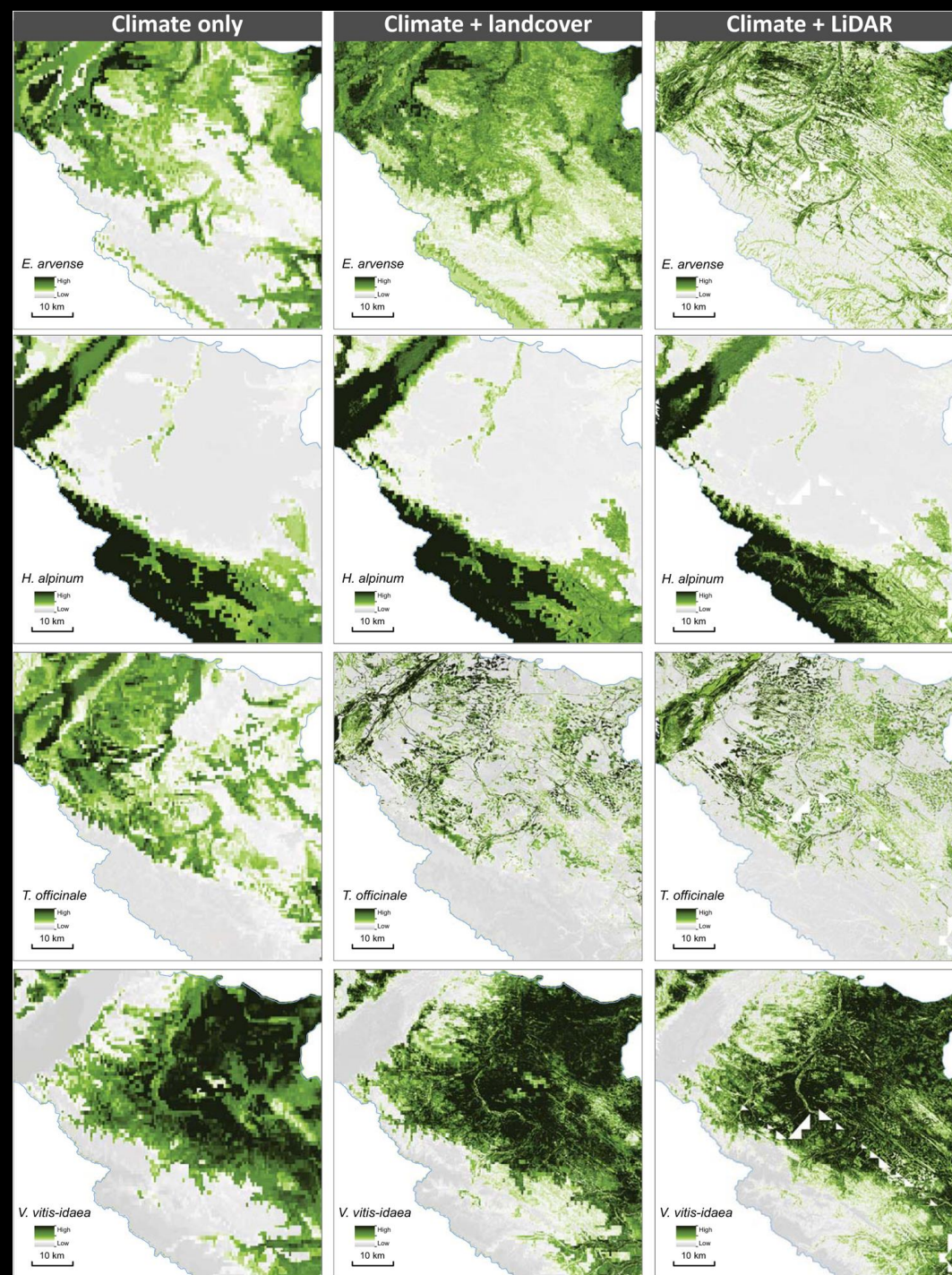


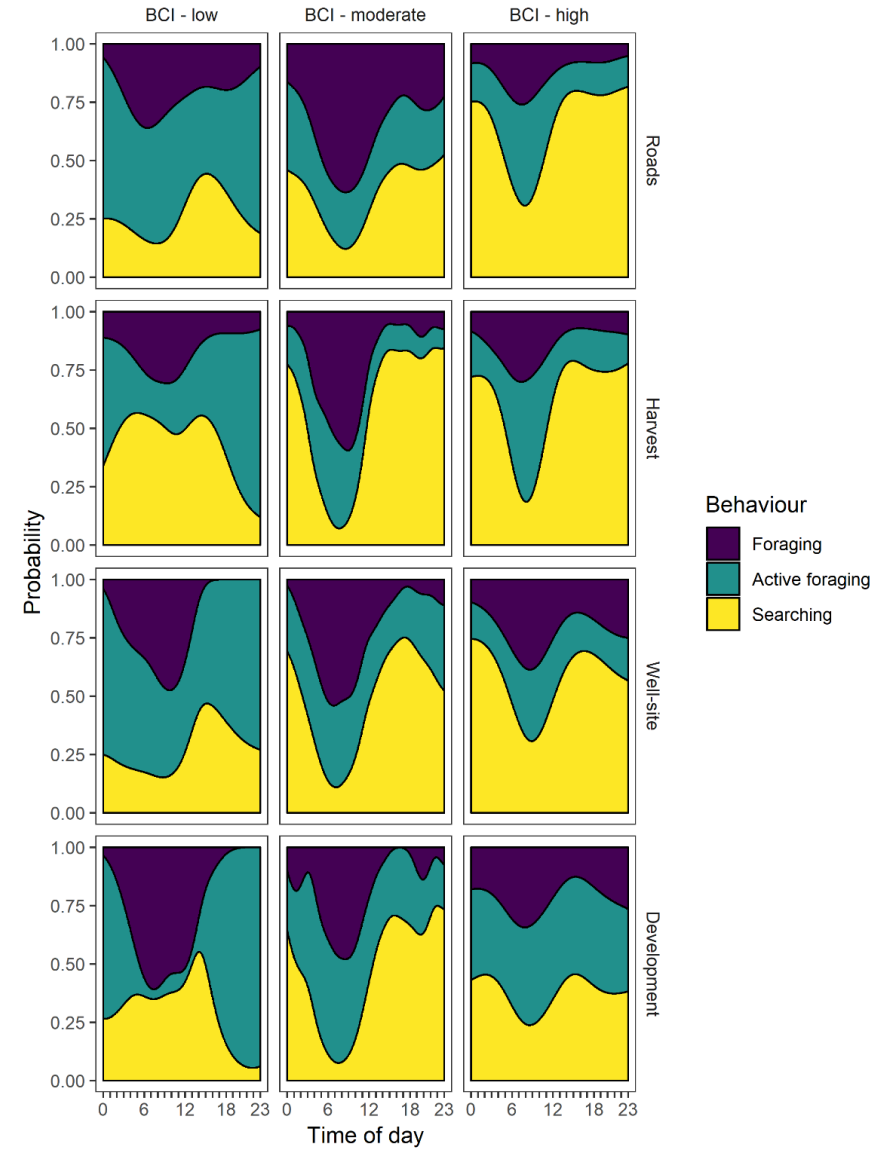






Nijland et al. 2014



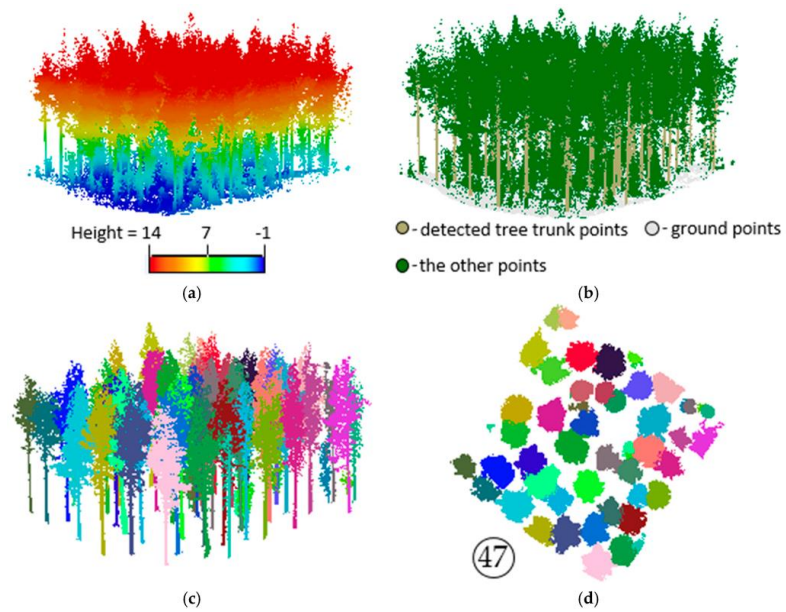
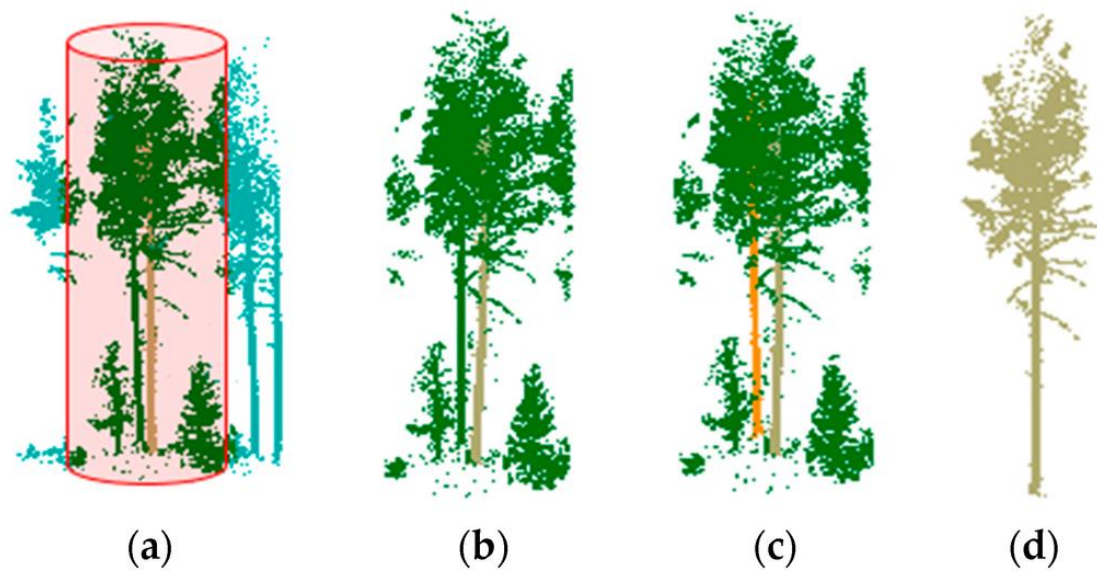
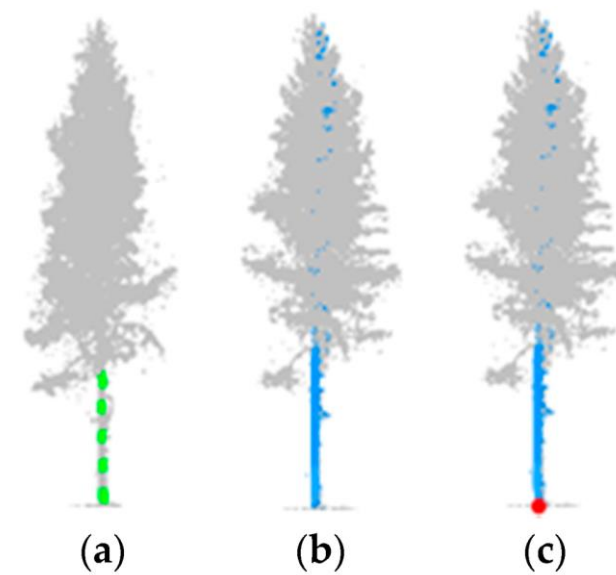
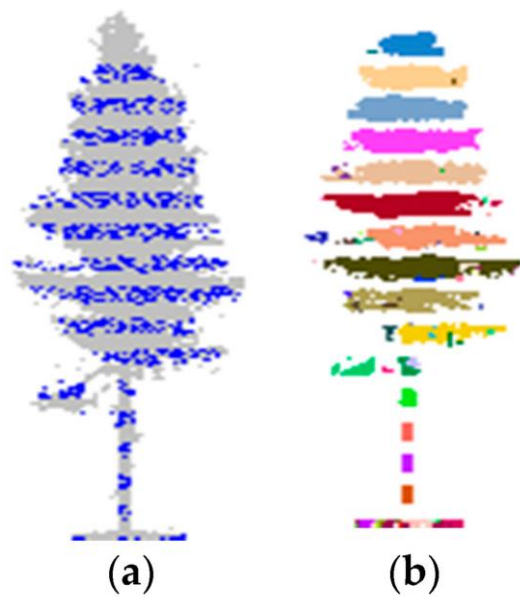




Parks
Canada

Parcs
Canada



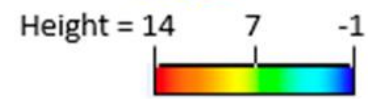
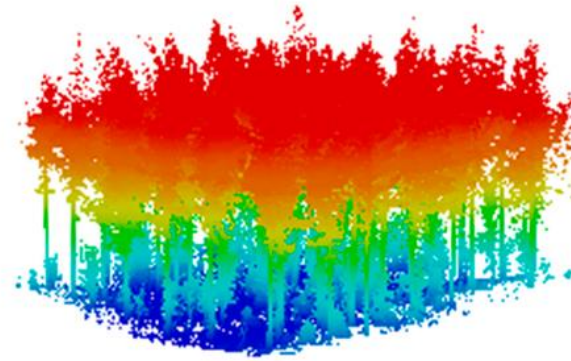




firesmart.ca



Whistler, BC



(a)

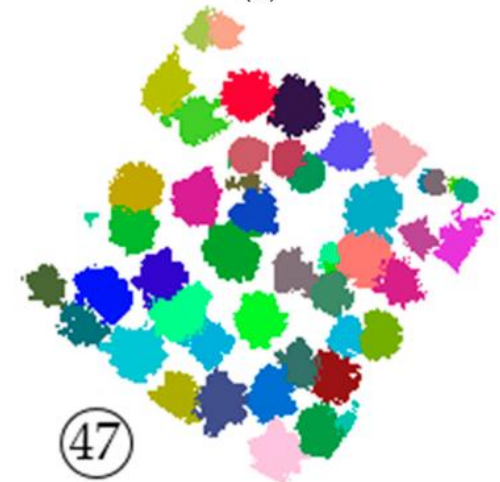


● - detected tree trunk points ○ - ground points
● - the other points

(b)



(c)



47

(d)

Yang et al. 2016

Questions?

mathieu.bourbonnais@ubc.ca

