

"Before anything
else, preparation
is the key to
success."

~ Alexander Graham Bell



Paul Edmonds
www.reddragonconsulting.com

Impact across the Province

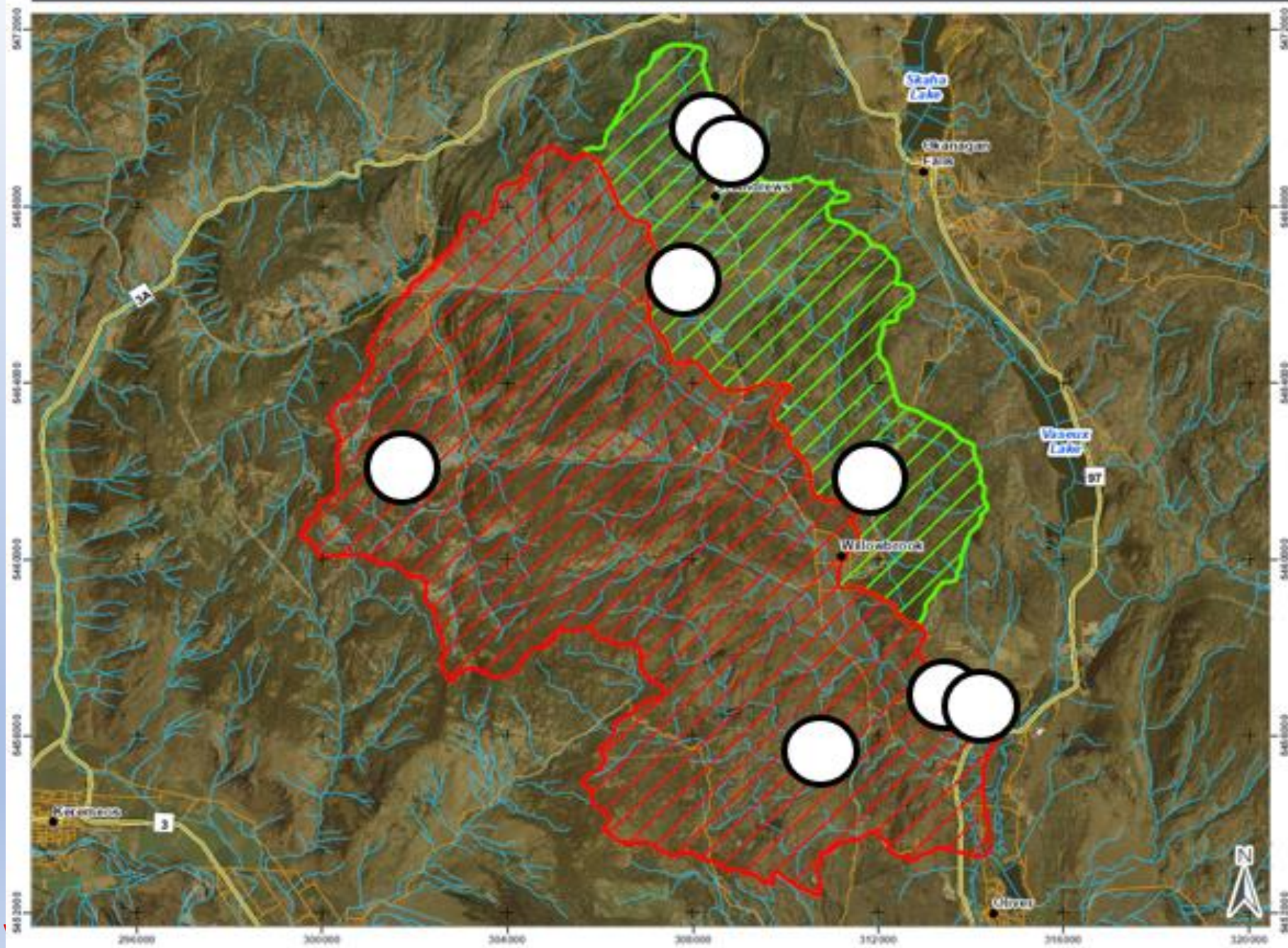
Wildfires and Flood impact	2017	2018
Displaced people	65,000	30,000 estimate
Wildfire impact	12,161 km ²	12,984 km ²
Flood Reports	80	170
Fire Fighters	3,906	4,000 estimate
Responders	-	10,000 estimate



Local Impact on People

- Regional District Okanagan Similkameen
- Over 200 Ordered Evacuation, 3000 Evacuation alerts
- Regional District Kootenay Boundary/Grand Forks
- 1390 Ordered Evacuation

WATERSHED OVERVIEW

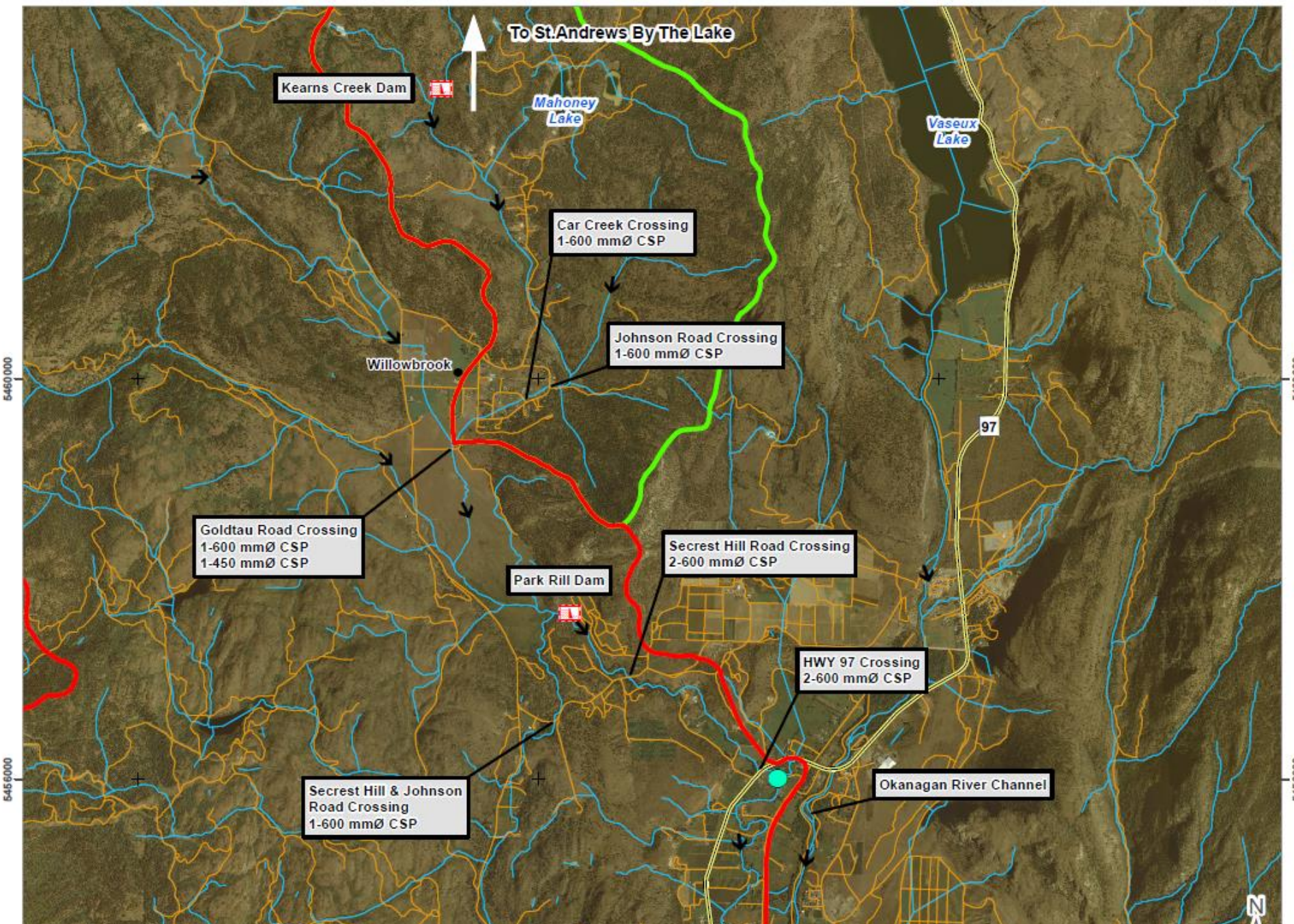


March 22 2018

Red Dragon
Consulting

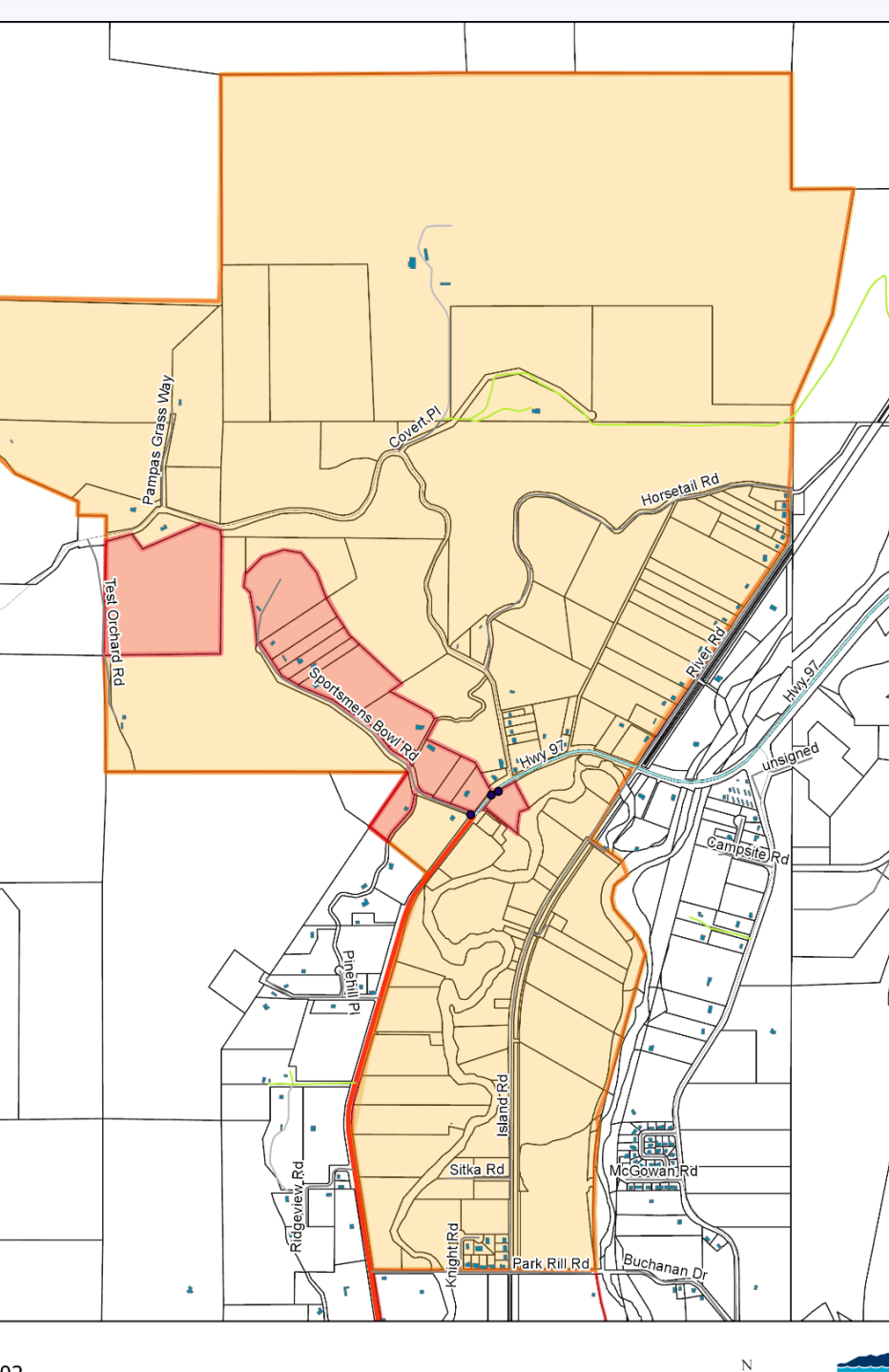


WATERSHED OVERVIEW



Red Dragon
Consulting





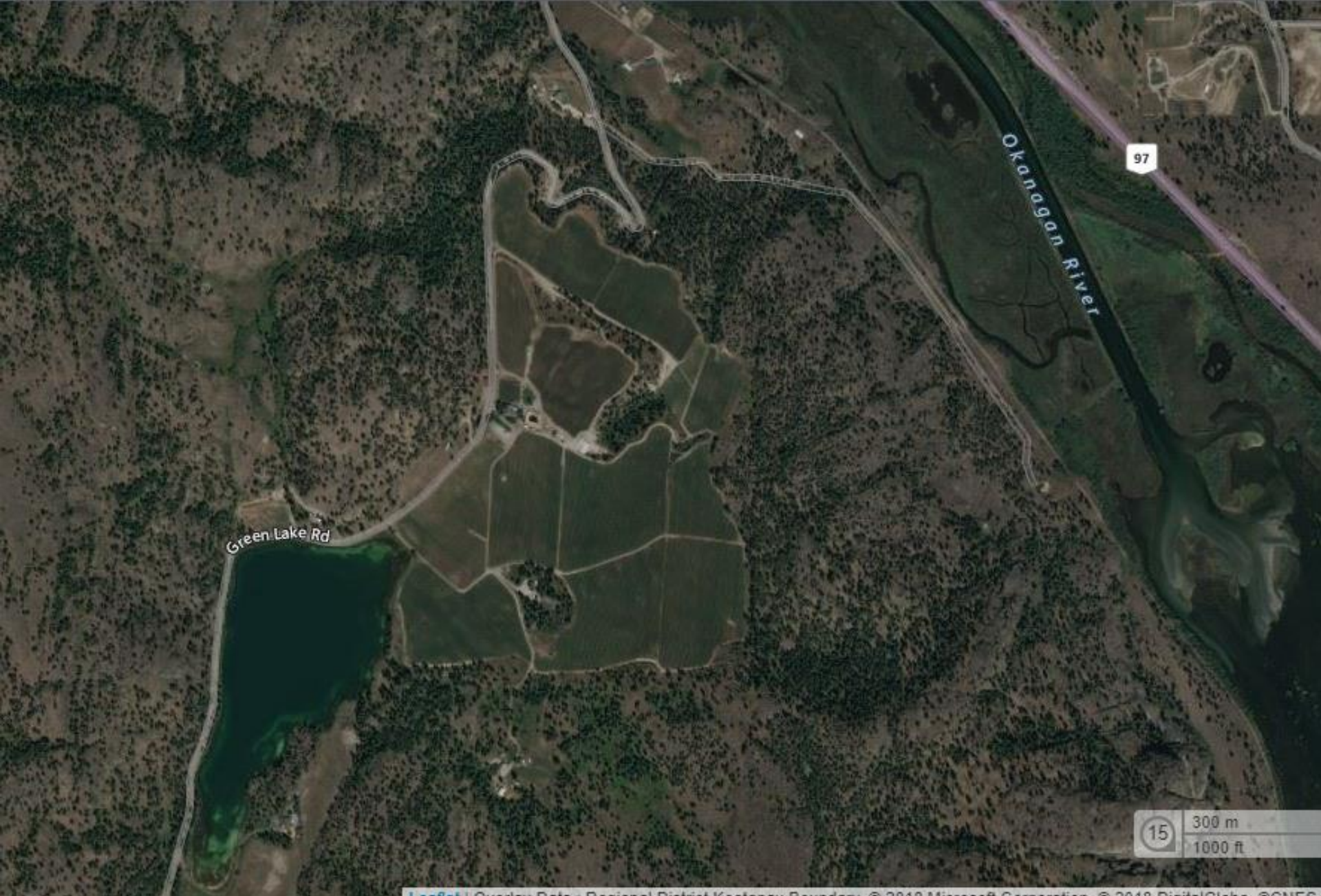




Twin Lakes

Red Dragon
Consulting

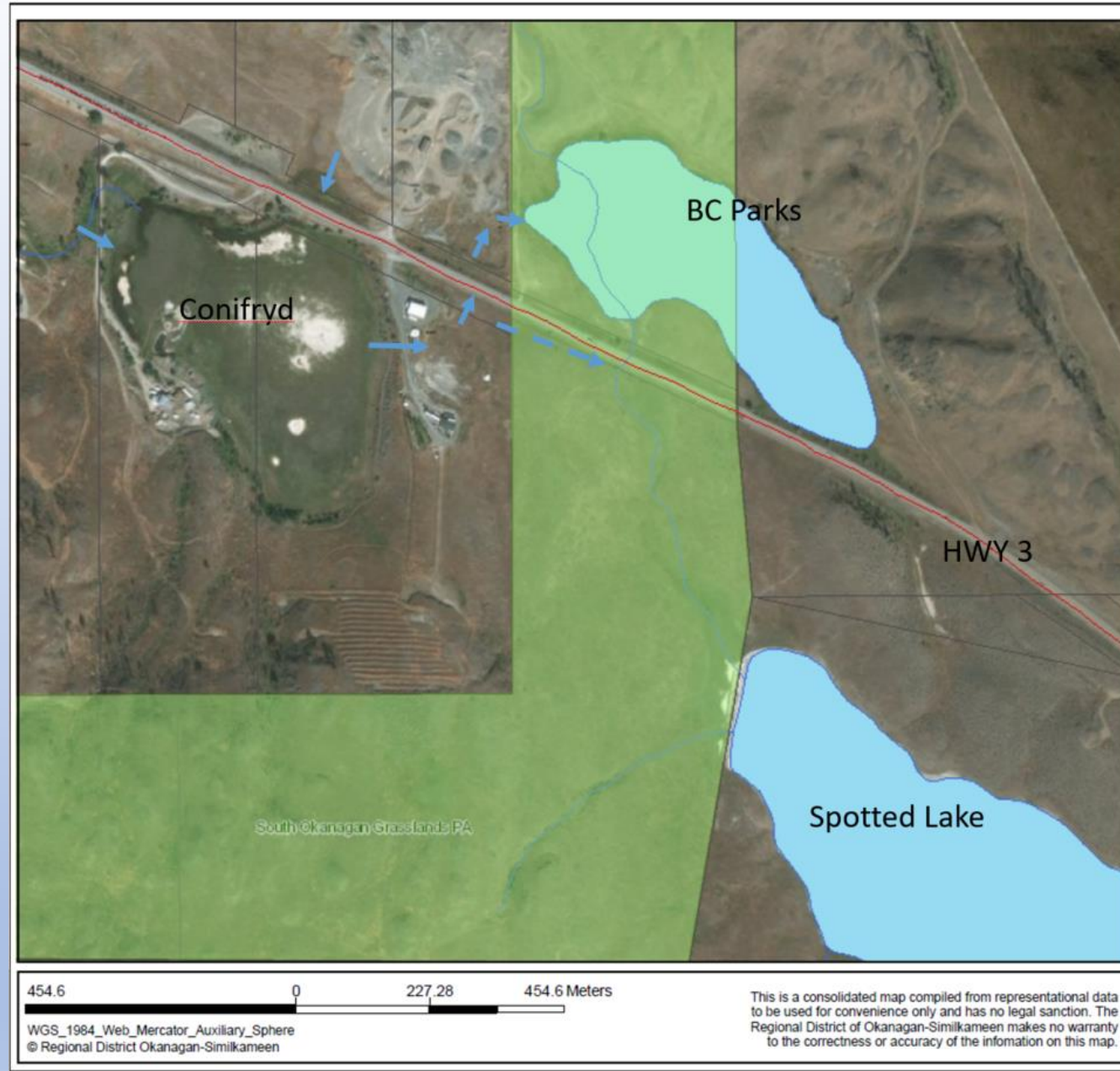




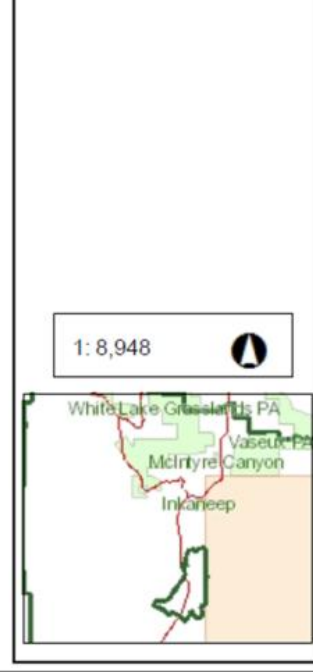
Green Lake

Red Dragon
Consulting





Conifryd and Spotted Lake



Red Dragon
Consulting



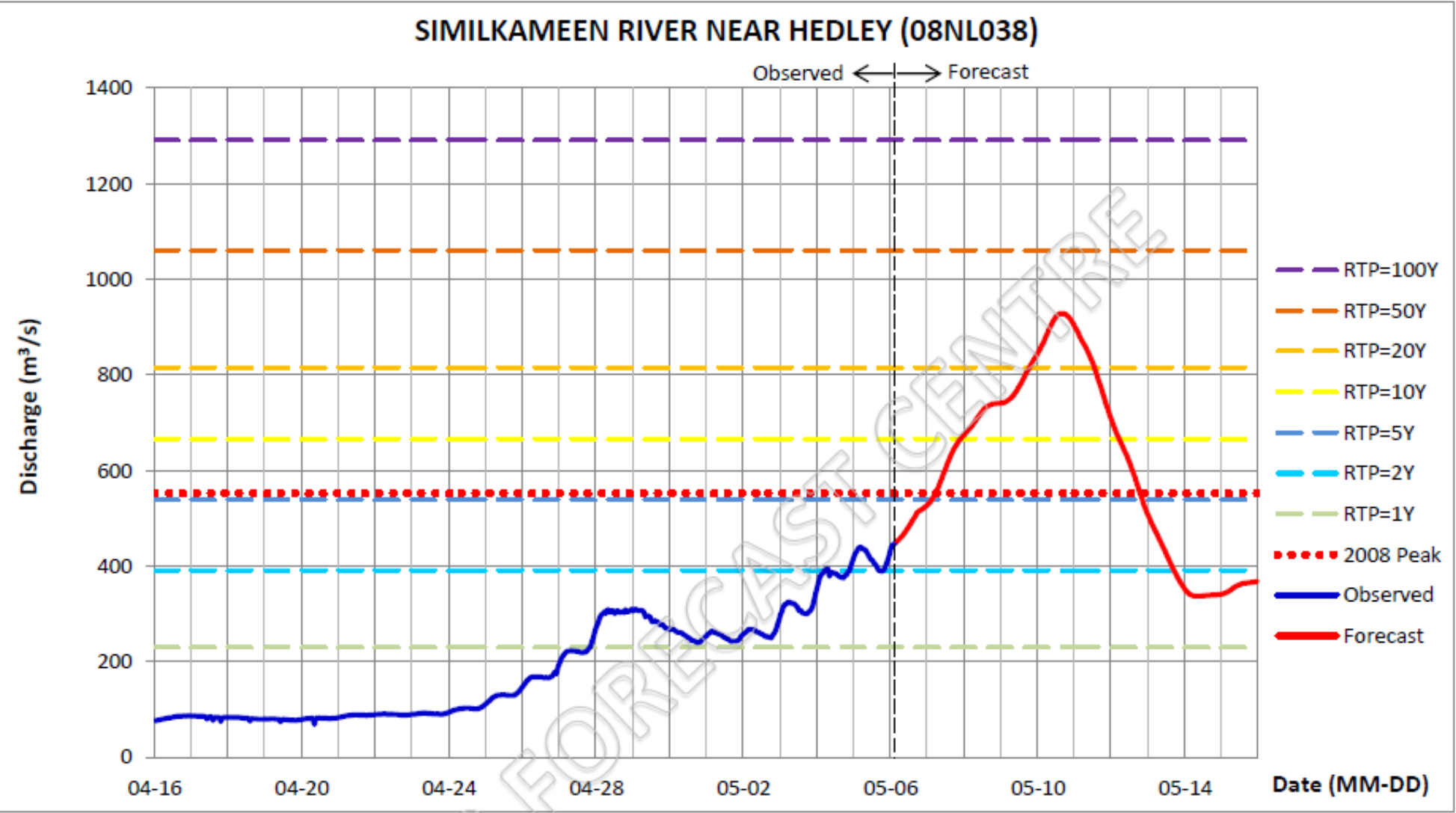
Similkameen



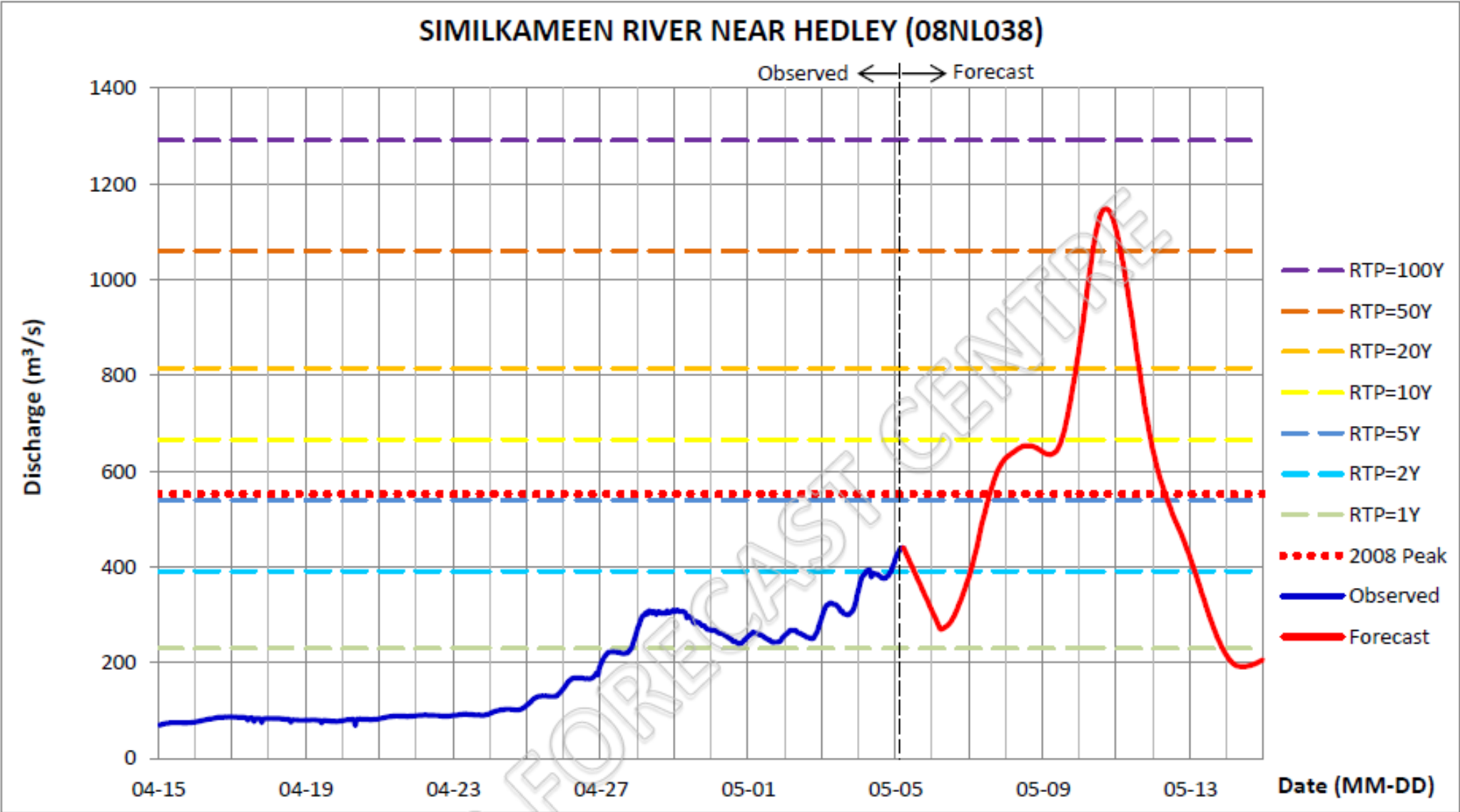
Red Dragon
Consulting



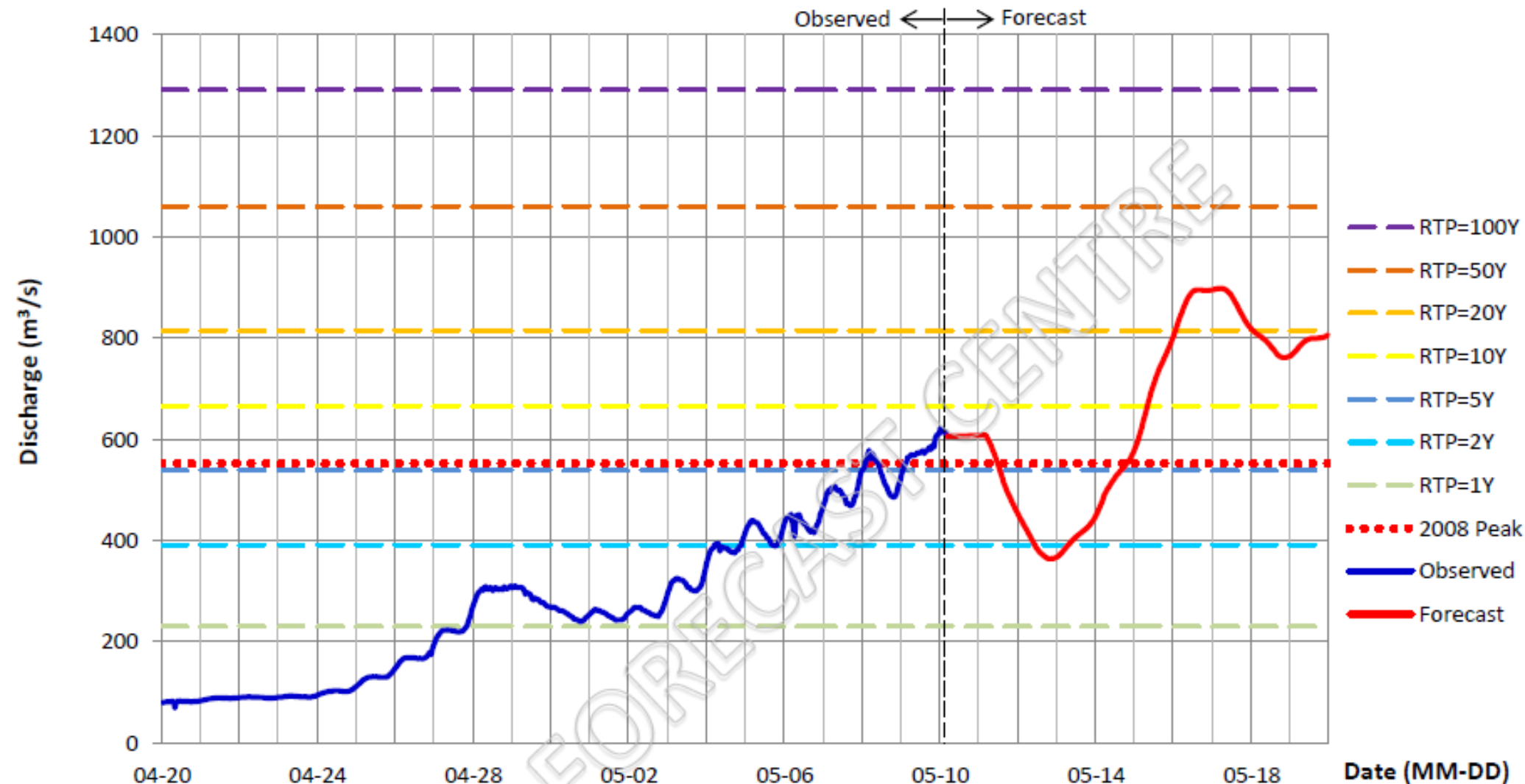
Note: Set "Check for newer version of stored pages" to "Every time I visit the webpage" and refresh browser frequently to view latest forecast.



Note: Set "Check for newer version of stored pages" to "Every time I visit the webpage" and refresh browser frequently to view latest forecast.

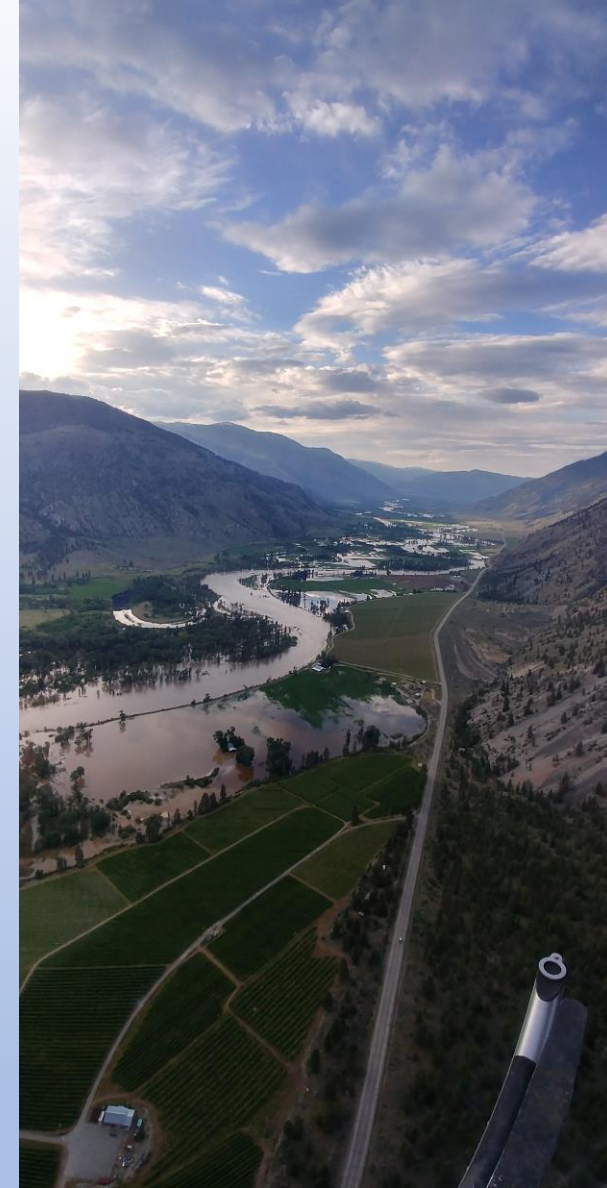
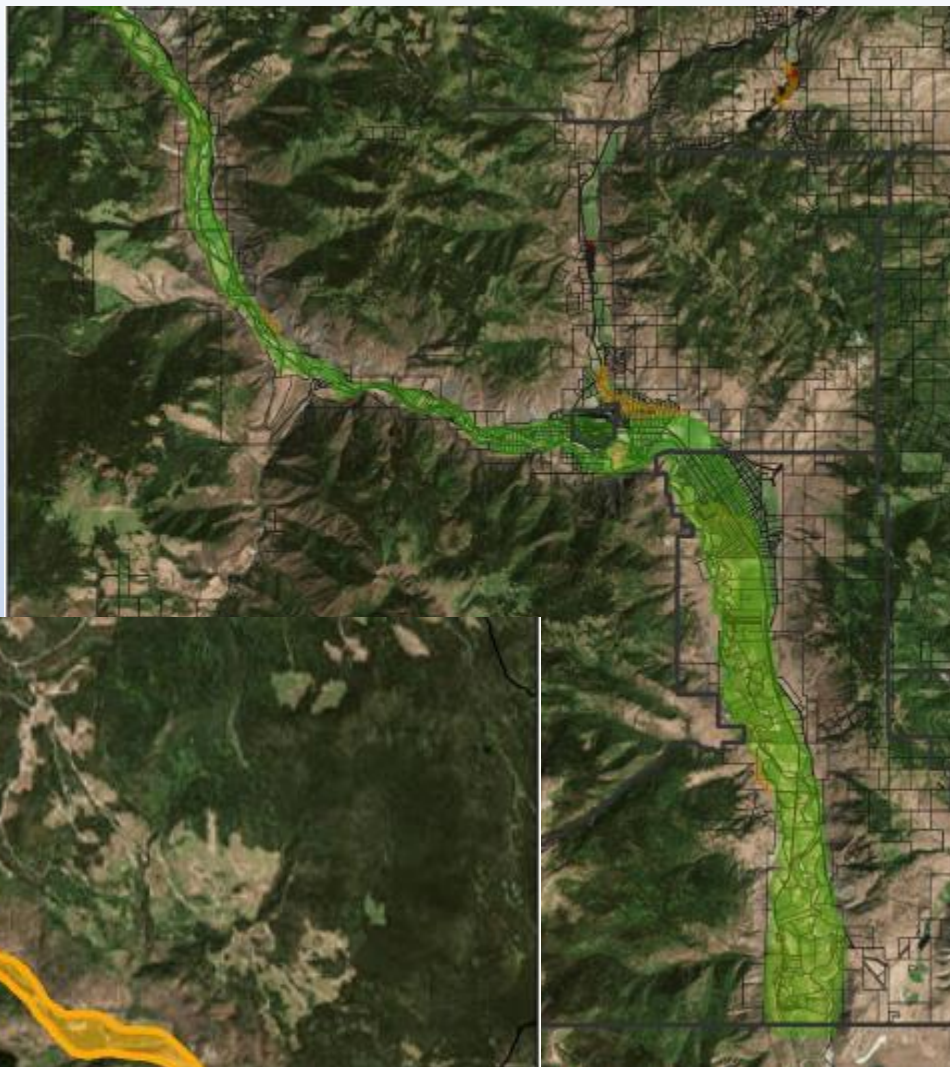


SIMILKAMEEN RIVER NEAR HEDLEY (08NL038)





Issued: 2018-05-09 / 16:30 pm
Incident Map - Evacuation Alert - SUNKATCHERS R V PARK CO-OPERATIVE
Regional District of Okanagan-Similkameen



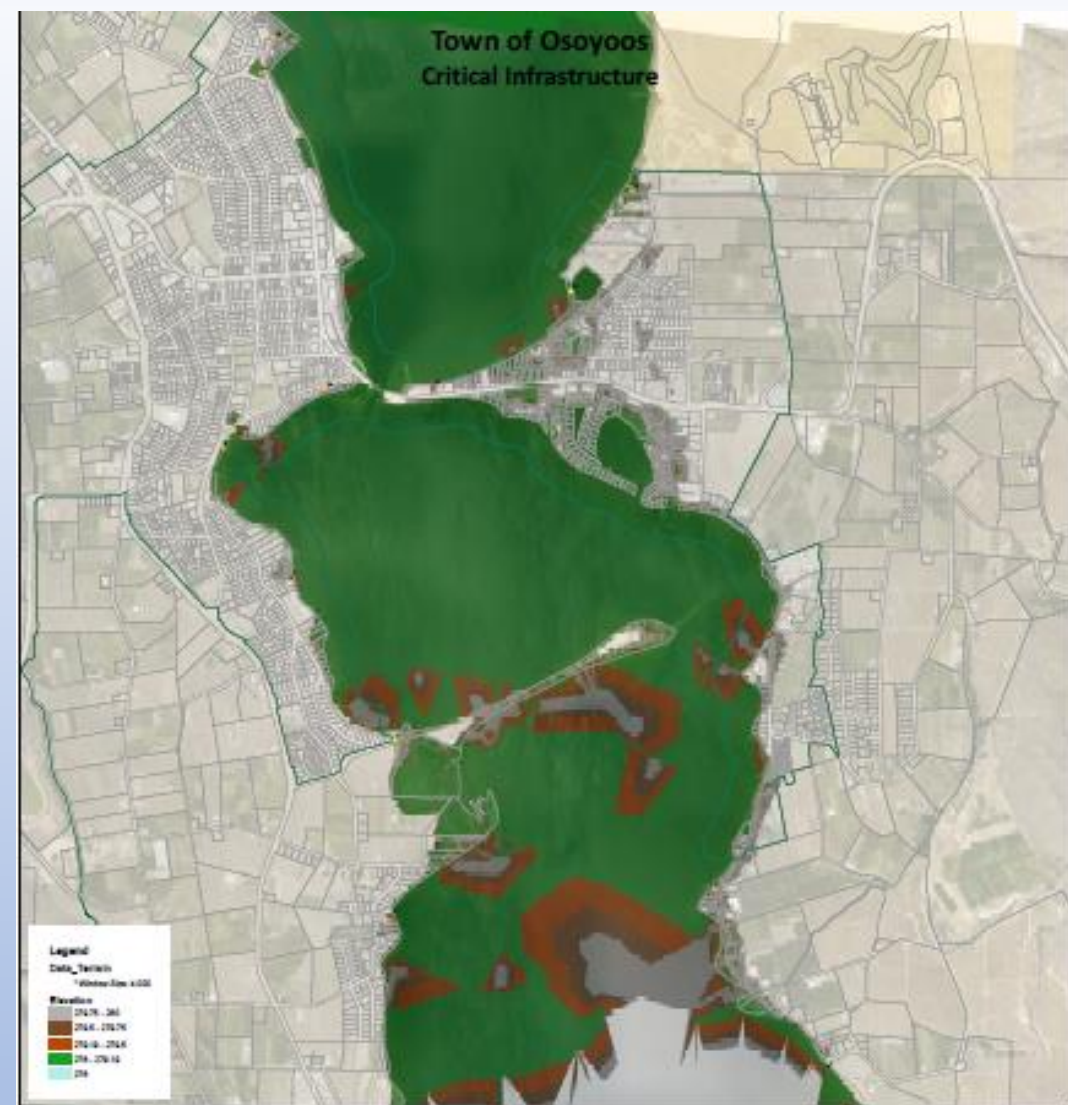
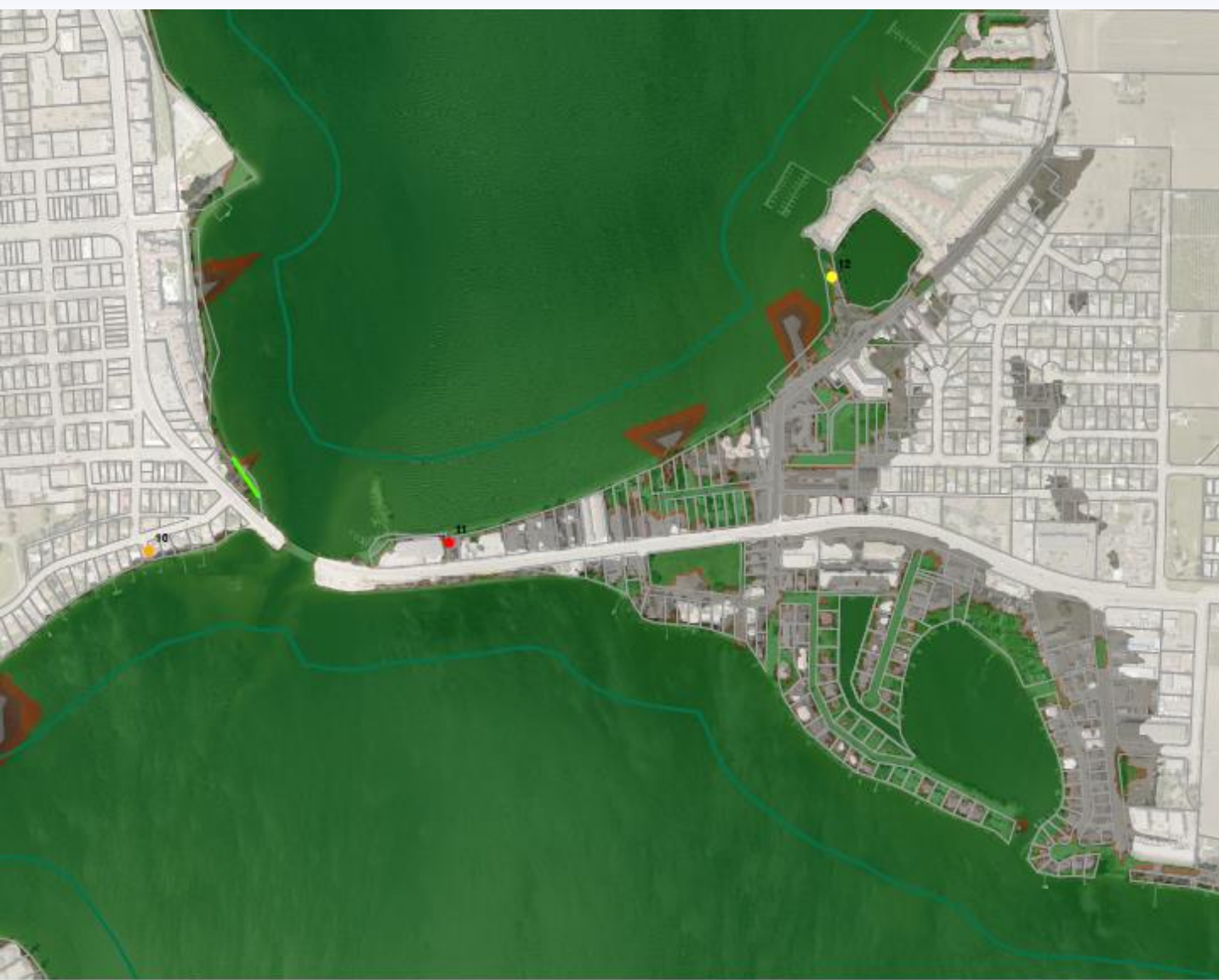
Red Dragon
Consulting





Osoyoos





MAPID	NAME	PRIORITY	Elevation (Metres)	Elevation (Feet)
1	Private Pumphouses	N/A	279.40	916.43
2	South Lakeshore Lift Station	M	279.00	915.12
3	Residence 2005 18th Street	H	279.00	915.12
4	Haynes Point Lift Station	L	280.00	918.40
5	North Lakeshore Lift Station	H	280.00	918.40
7	Blue Blinker Lift Station	H	280.00	918.40
8	Main Sewer Lift	M	280.00	918.40
9	Sewer Manhole	H	279.00	915.12
10	Kingfisher Pumphouse	M	281.00	921.08
11	Starlite Lift Station	H	279.90	918.07
12	Wells 8 and 9	L	280.00	918.40
13	Cottonwood Sewer Lift Station	M	279.00	915.12
14	Y Property Well	M	279.00	915.12
15	Spartan Drive Lift Station	M	280.00	918.40

Legend

IR

Town Boundary

Private

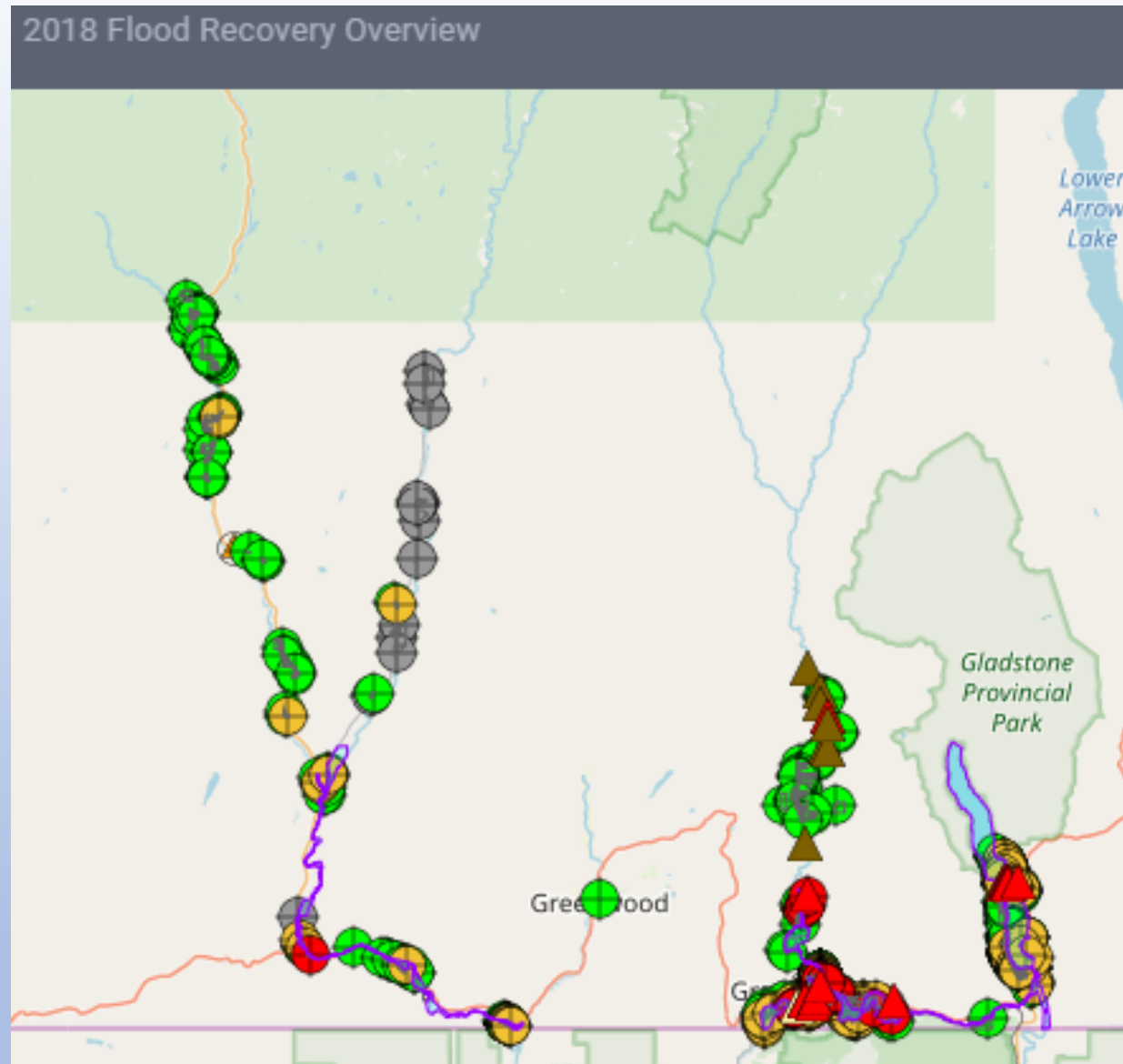
PRIORITY LEVEL

High

Medium

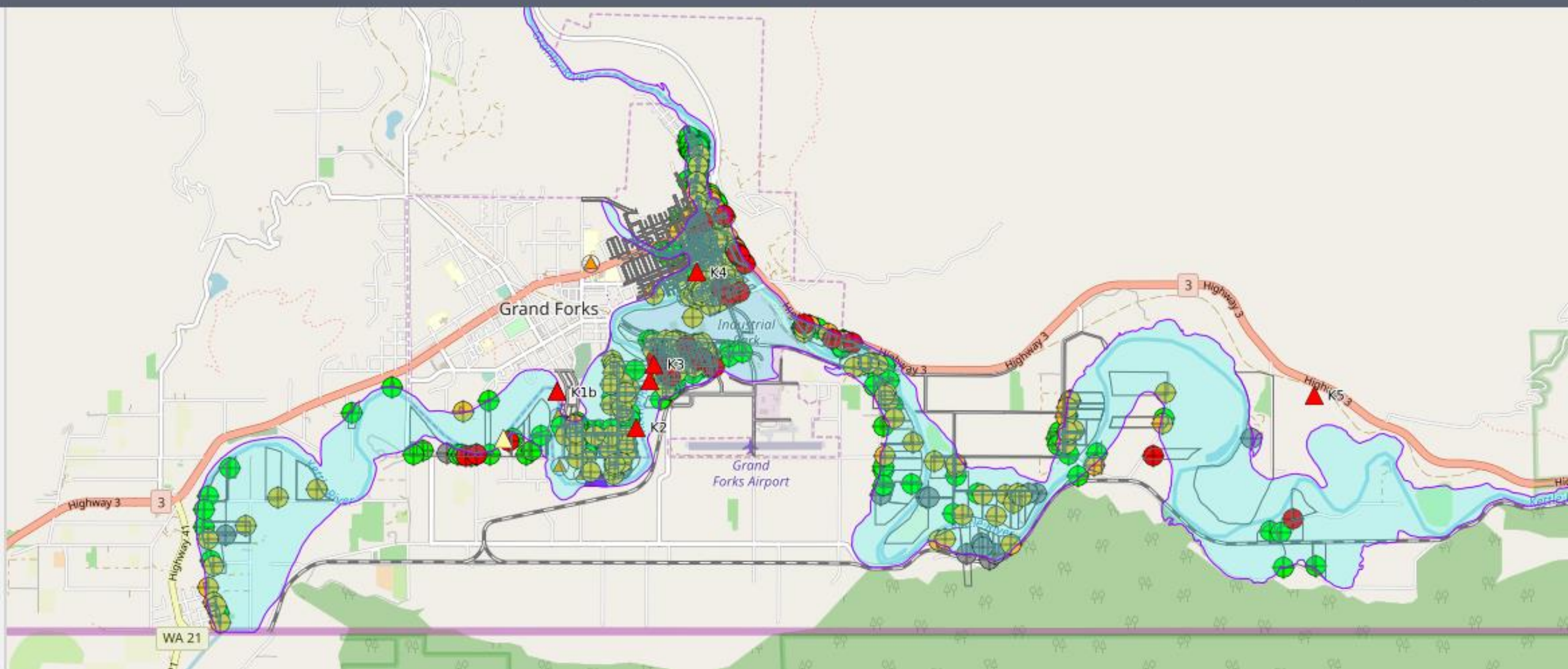
Low

Grand Forks



Red Dragon
Consulting



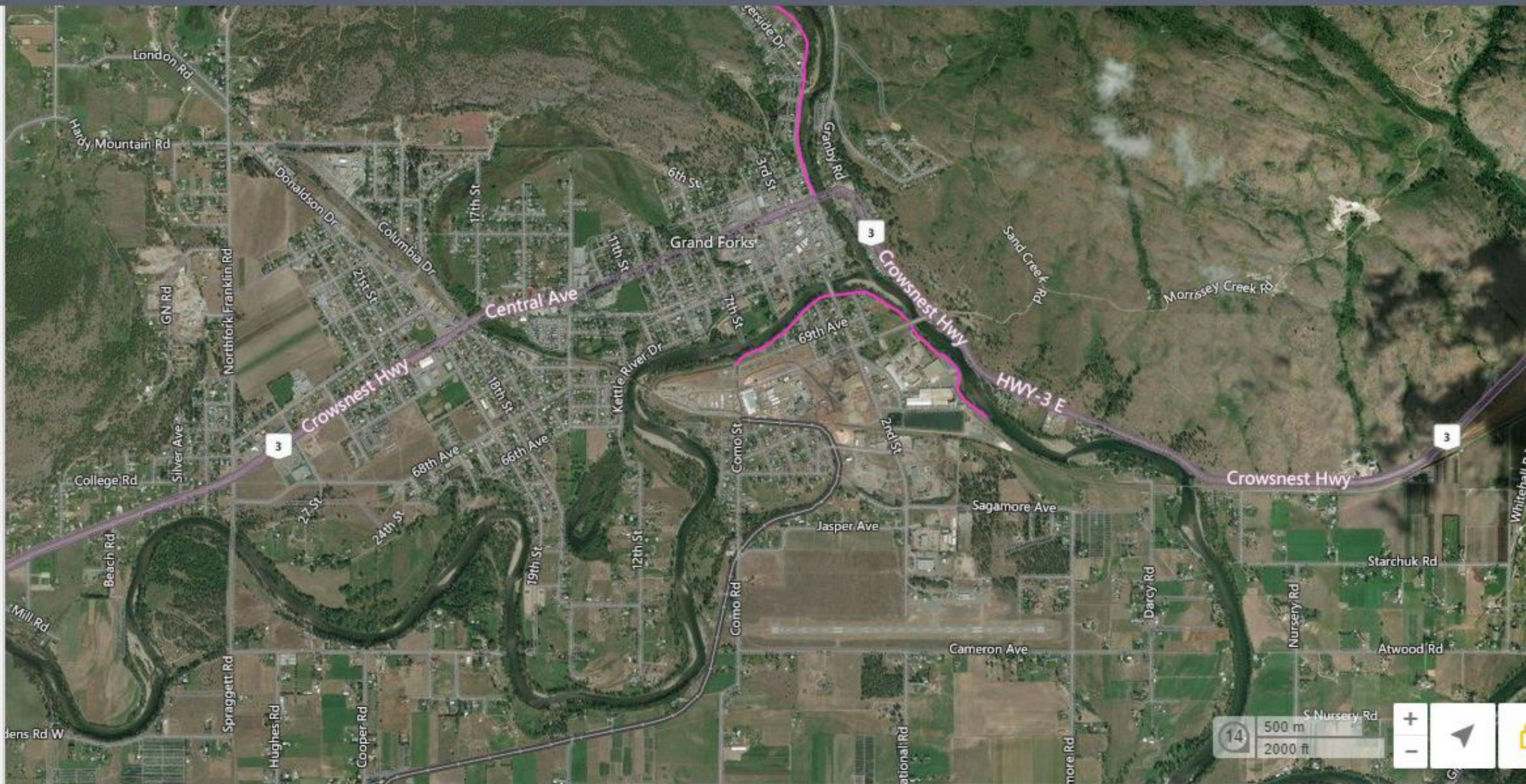




Red Dragon
Consulting



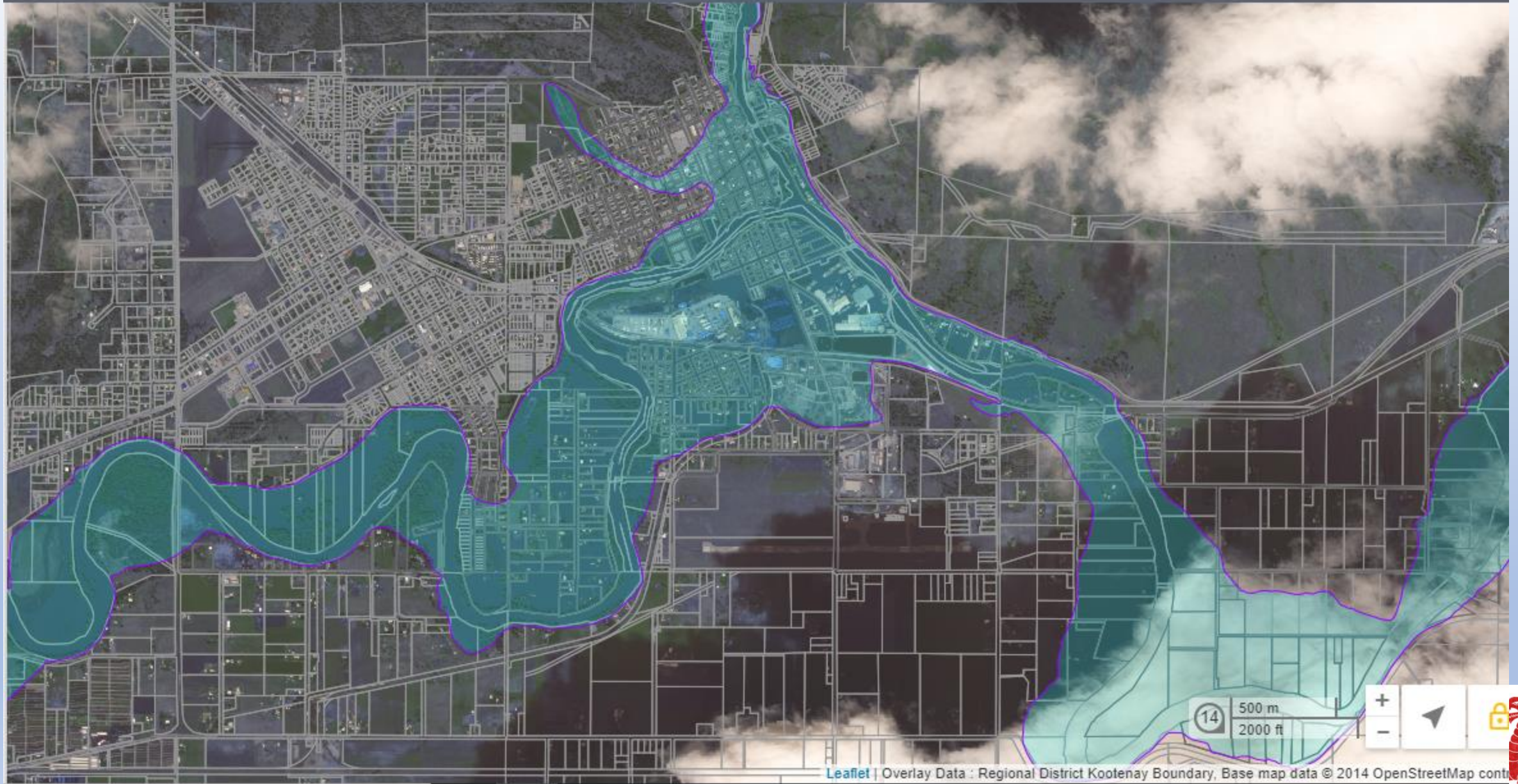




Red Dragon
Consulting

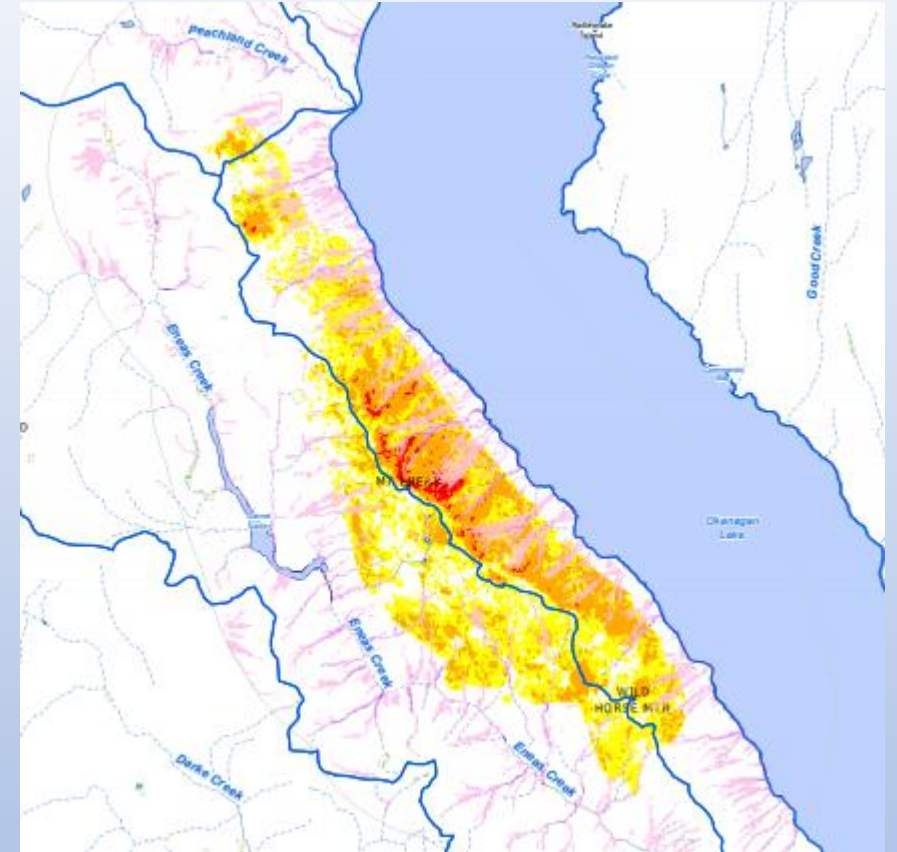












Red Dragon
Consulting



Sendai Framework

- Priority 1: Understanding disaster risk
- Priority 2: Strengthening disaster risk governance
 - to manage disaster risk
- Priority 3: Investing in disaster risk reduction for resilience
- Priority 4: Enhancing disaster preparedness for effective response and to “Build Back Better” in recovery, rehabilitation and reconstruction.

To plan for change tomorrow, we need to mitigate and build resilience in all that we do today.

If you are not prepared, we are not prepared.



Three methods to gain wisdom:

- Reflection
- Imitation
- Experience

To plan for change tomorrow, we need to mitigate and build resilience in all that we do today.

If you are not prepared, we are not prepared.



Building human resilience

- Understanding Risk
- Being Prepared
- Assessment and need
- Work in teams not alone
- Limit hours worked
- Communication
- Together
- Assessment and need
- Take breaks
- Make the best contribution
- Recognise stress, adopt coping techniques
- Needs of victims verses needs of responder
- There are other people who can help in the response



Human Impact

Responder

- Burnout
- Inability to recruit
- Nothing you can do will help
- You are not doing your job well
- Overwhelmed and extreme exhaustion
- Stress and frustration
- Reliance on coping mechanism

People

- Affected residents not receiving service
- Who will help me
- A feeling of being lost
- Nobody listens
- Financial/security loss
- Lost personal belongings
- Short and long term traumatic impact

